

## RBKC EiP: Basements: Representation by Victoria Road Area Residents' Association

1 message



Dear Chris,

I attach a representation by the Victoria Road Area Residents' Association. This summarises our experience with basements over the last decade, especially the last 5 years. I have also provided a set of photographs – please can you associate these with this representation.

### Key to the photographs:

DSC\_0270: Rear of 3/4 Albert Place: comprehensive refurbishment of two houses including basements – started December 2012- not yet finished!

DSC\_0271: 7 Albert Place: major refurbishment (no basement)

DSC\_0272: 3/4 Albert Place- well managed, everything stored off street including site office.

DSC\_0273: 5 Albert Place: about to start

DSC\_0274: 2 Albert Place: a looong, slooow basement+ refurbishment job -started 4 years ago, no end in sight.

DSC\_0275: 12 Albert Place: permission granted for basement 12 May 2014 (Studio Indigo)

DSC\_0276: 14 Albert Place: permission granted for basement 18 July 2014 (Savills/London Planning Practice)

DSC\_0277: 3/4 Albert Place looking west

DSC\_0278: 7 Albert Place: major refurbishment

DSC\_0279: 5 Albert Place: proposed basement granted on appeal- refusal was based on the loss of a mature tree (9 December 2013)

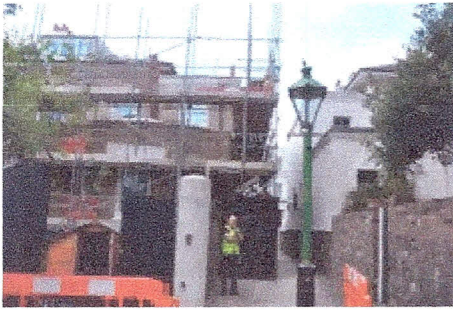
DSC\_0280: 5 Albert Place: Acacia in back garden that will be felled to accommodate a basement with 85% coverage of back garden allowed on appeal. This tree is of great amenity value to the area, particularly to Cambridge Place.

Michael Bach  
Chairman  
Victoria Road Area Residents' Association  
Michael Bach

Chairman:  
Victoria Road Area Residents' Association

---

**12 attachments**



**DSC\_0270[2].jpg**  
357K



**DSC\_0271[2].jpg**  
351K



**DSC\_0272.jpg**  
377K



**DSC\_0273.jpg**  
327K



**DSC\_0274.jpg**  
385K



**DSC\_0275.jpg**  
224K



**DSC\_0276.jpg**  
300K



**DSC\_0277.jpg**  
343K



**DSC\_0278.jpg**  
388K



**DSC\_0279.jpg**  
280K



**DSC\_0280[2].jpg**  
495K



**Basements VRARA representation.docx**  
134K