

Quirk, Barry
Chief Executive
The Royal Borough of Kensington and Chelsea
Chief Executive
£195,000 - £199,999
Plus PRP
FTE : 1

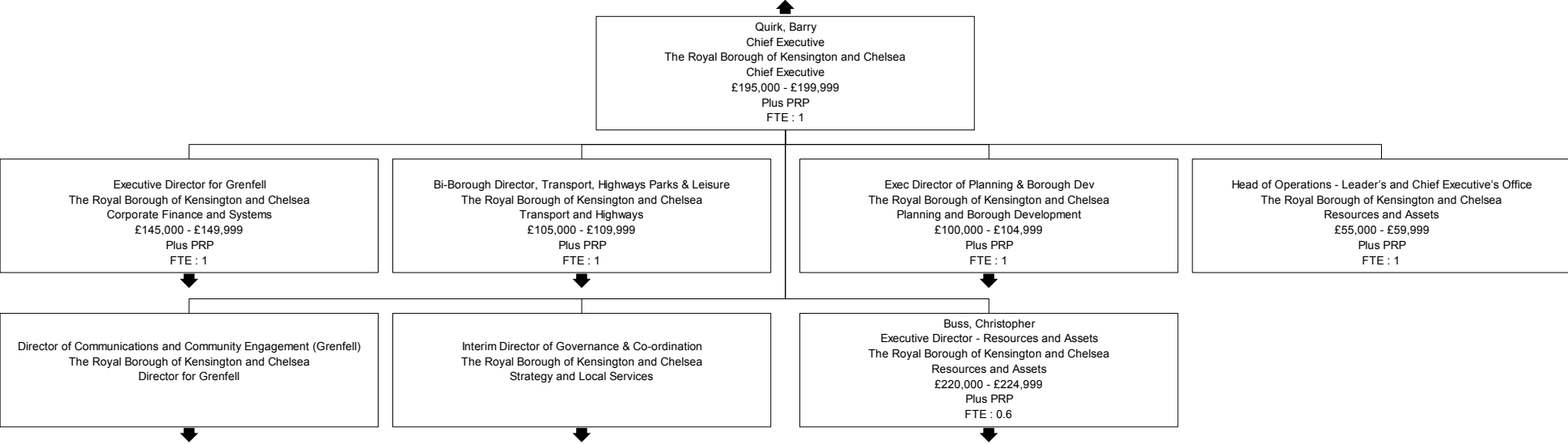


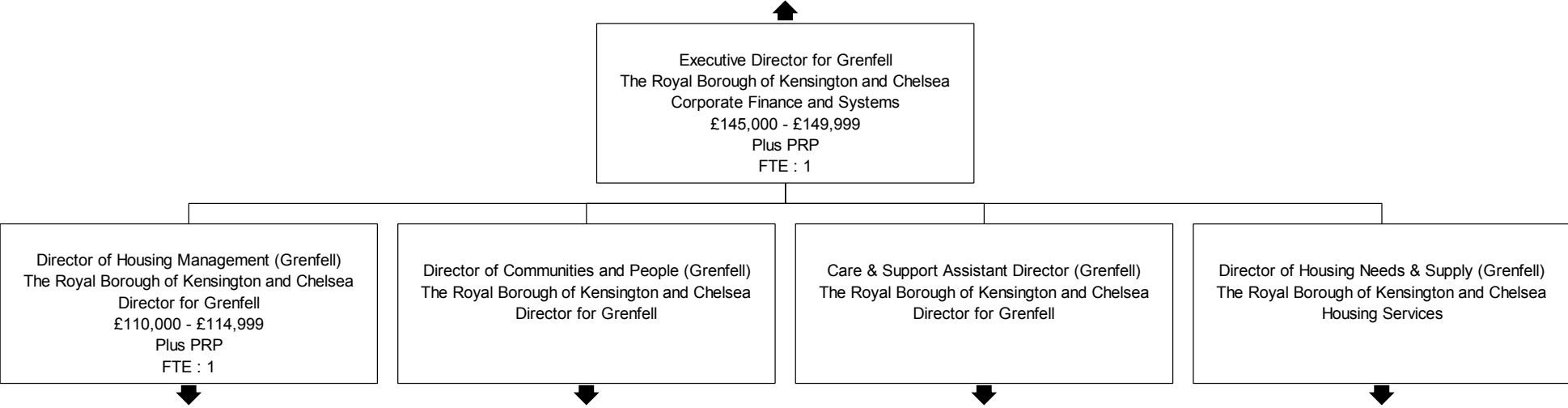
Chief Executive WCC
City of Westminster
Chief Executive's Office



Chief Executive LBHF
London Borough of Hammersmith and Fulham
Chief Executive





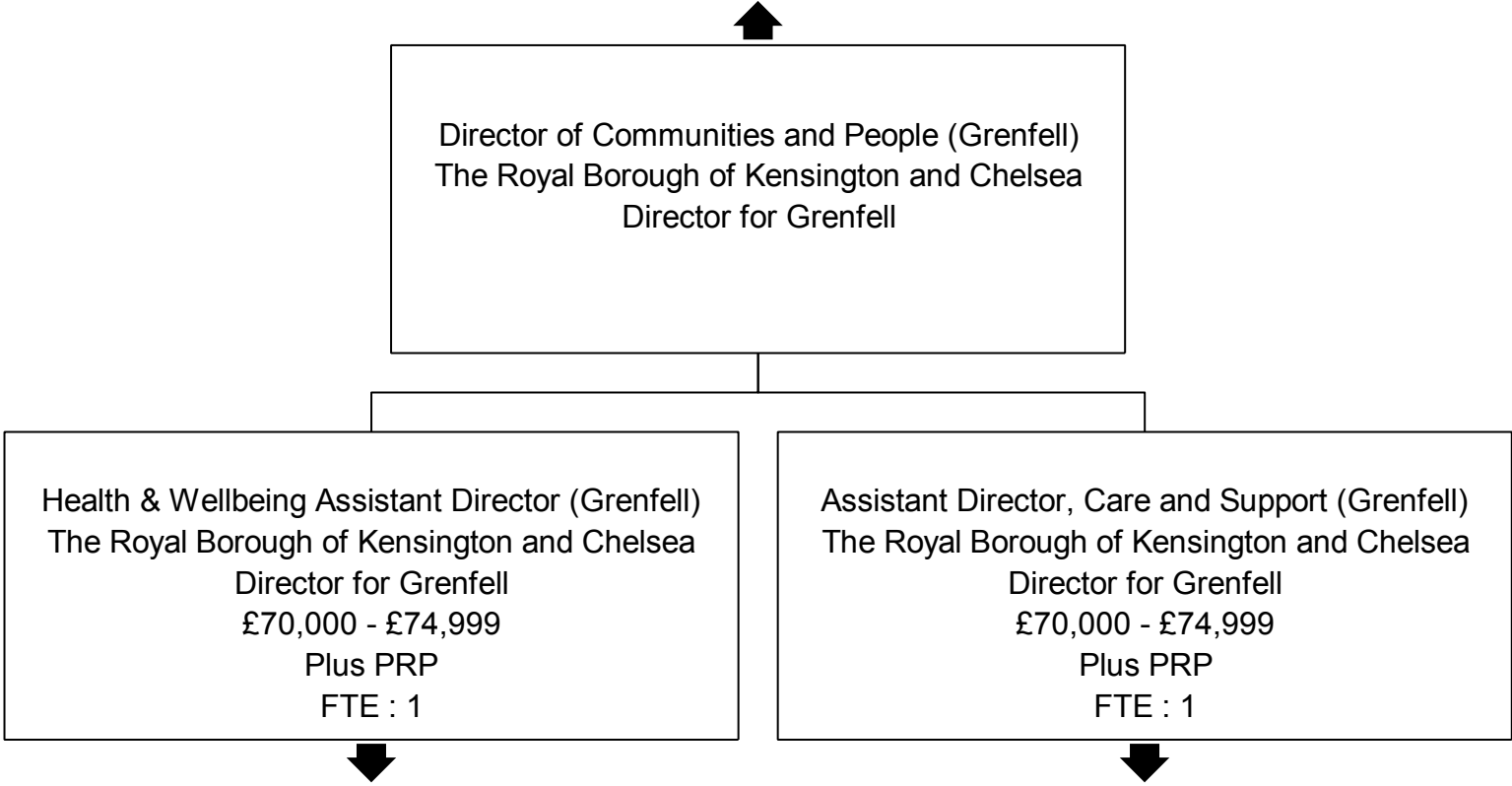




Director of Housing Management (Grenfell)
The Royal Borough of Kensington and Chelsea
Director for Grenfell
£110,000 - £114,999
Plus PRP
FTE : 1

Neighbourhood Director (Grenfell)
The Royal Borough of Kensington and Chelsea
Director for Grenfell
£70,000 - £74,999
Plus PRP
FTE : 1

Head of Housing Commissioning
The Royal Borough of Kensington and Chelsea
Housing Services
£60,000 - £64,999
Plus PRP
FTE : 1





Health & Wellbeing Assistant Director (Grenfell)
The Royal Borough of Kensington and Chelsea
Director for Grenfell
£70,000 - £74,999
Plus PRP
FTE : 1

Head of Service Portfolio (Grenfell)
The Royal Borough of Kensington and Chelsea
Director for Grenfell
£55,000 - £59,999
Plus PRP
FTE : 0.8055555555555556



Assistant Director, Care and Support (Grenfell)
The Royal Borough of Kensington and Chelsea
Director for Grenfell
£70,000 - £74,999
Plus PRP
FTE : 1

Head of Service -Care and Support (Grenfell)
The Royal Borough of Kensington and Chelsea
Director for Grenfell
£75,000 - £79,999
Plus PRP
FTE : 1



Care & Support Assistant Director (Grenfell)
The Royal Borough of Kensington and Chelsea
Director for Grenfell

Care for Grenfell - Head of Service
The Royal Borough of Kensington and Chelsea
Corporate Finance and Systems
£65,000 - £69,999
Plus PRP
FTE : 1

Head of Commissioning (Grenfell)
The Royal Borough of Kensington and Chelsea
Director for Grenfell
£60,000 - £64,999
Plus PRP
FTE : 1



Director of Housing Needs & Supply (Grenfell)
The Royal Borough of Kensington and Chelsea
Housing Services

Assistant Director
The Royal Borough of Kensington and Chelsea
Housing Services
£75,000 - £79,999
Plus PRP
FTE : 1



Bi-Borough Director, Transport, Highways Parks & Leisure
The Royal Borough of Kensington and Chelsea
Transport and Highways
£105,000 - £109,999
Plus PRP
FTE : 1

Head of Leisure
The Royal Borough of Kensington and Chelsea
Safer Neighbourhoods
£70,000 - £74,999
Plus PRP
FTE : 1

Chief Transport Policy Officer
The Royal Borough of Kensington and Chelsea
Transport and Highways
£60,000 - £64,999
Plus PRP
FTE : 1



Exec Director of Planning & Borough Dev
The Royal Borough of Kensington and Chelsea
Planning and Borough Development
£100,000 - £104,999
Plus PRP
FTE : 1

Head of Forward Planning
The Royal Borough of Kensington and Chelsea
Planning and Borough Development
£70,000 - £74,999
Plus PRP
FTE : 1

Head of Support and Systems
The Royal Borough of Kensington and Chelsea
Planning and Borough Development
£60,000 - £64,999
Plus PRP
FTE : 1



Director of Communications and Community Engagement (Grenfell)
The Royal Borough of Kensington and Chelsea
Director for Grenfell

Head of Grenfell Communications
The Royal Borough of Kensington and Chelsea
Director for Grenfell
£70,000 - £74,999
Plus PRP
FTE : 1



Interim Director of Governance & Co-ordination
The Royal Borough of Kensington and Chelsea
Strategy and Local Services

Head of Governance Services
The Royal Borough of Kensington and Chelsea
Strategy and Local Services
£55,000 - £59,999
Plus PRP
FTE : 1

Head of Registration Services
The Royal Borough of Kensington and Chelsea
Strategy and Local Services
£50,000 - £54,999
Plus PRP
FTE : 1

↑
Buss, Christopher
Executive Director - Resources and Assets
The Royal Borough of Kensington and Chelsea
Resources and Assets
£220,000 - £224,999
Plus PRP
FTE : 0.6

Director for HR and OD
The Royal Borough of Kensington and Chelsea
HR and OD
£115,000 - £119,999
Plus PRP
FTE : 1
↓

Director for Corporate Property
The Royal Borough of Kensington and Chelsea
Corporate Property
£110,000 - £114,999
Plus PRP
FTE : 1
↓

Director of Customer Access
The Royal Borough of Kensington and Chelsea
Customer Access
£90,000 - £94,999
Plus PRP
FTE : 1
↓

Tri-borough Director of Audit, Risk, Fraud and Insurance
The Royal Borough of Kensington and Chelsea
Tri-borough Audit, Risk, Fraud and Insurance
£85,000 - £89,999
Plus PRP
FTE : 1
↓

Director of Financial Management
The Royal Borough of Kensington and Chelsea
Corporate Finance and Systems
£80,000 - £84,999
Plus PRP
FTE : 1
↓



Director for HR and OD
The Royal Borough of Kensington and Chelsea
HR and OD
£115,000 - £119,999
Plus PRP
FTE : 1

Head of HR Operations
The Royal Borough of Kensington and Chelsea
HR and OD
£80,000 - £84,999
Plus PRP
FTE : 1



Director for Corporate Property
The Royal Borough of Kensington and Chelsea
Corporate Property
£110,000 - £114,999
Plus PRP
FTE : 1

Head of Facilities Management (Tri Bor)
The Royal Borough of Kensington and Chelsea
Corporate Property
£90,000 - £94,999
Plus PRP
FTE : 1

Head of Investment and Development
The Royal Borough of Kensington and Chelsea
Corporate Property
£80,000 - £84,999
Plus PRP
FTE : 1

Head of Capital Projects
The Royal Borough of Kensington and Chelsea
Corporate Property
£80,000 - £84,999
Plus PRP
FTE : 1

↑
Director of Customer Access
The Royal Borough of Kensington and Chelsea
Customer Access
£90,000 - £94,999
Plus PRP
FTE : 1

Head of Revenues and Benefits
The Royal Borough of Kensington and Chelsea
Customer Access
£70,000 - £74,999
Plus PRP
FTE : 1

Head of IT Systems Support
The Royal Borough of Kensington and Chelsea
Customer Access
£65,000 - £69,999
Plus PRP
FTE : 1

Head of Business Rates and Recovery
The Royal Borough of Kensington and Chelsea
Customer Access
£60,000 - £64,999
Plus PRP
FTE : 1

Head of Strategy and Development
The Royal Borough of Kensington and Chelsea
Customer Access
£55,000 - £59,999
Plus PRP
FTE : 1

Head of Customer Service Operations
The Royal Borough of Kensington and Chelsea
Customer Access
£50,000 - £54,1000
Plus PRP
FTE : 1



Tri-borough Director of Audit, Risk, Fraud and Insurance
The Royal Borough of Kensington and Chelsea
Tri-borough Audit, Risk, Fraud and Insurance
£85,000 - £89,999
Plus PRP
FTE : 1

Tri Borough Head of Fraud
The Royal Borough of Kensington and Chelsea
Tri-borough Audit, Risk, Fraud and Insurance
£60,000 - £64,999
Plus PRP
FTE : 1

Head of Tri-Borough Insurance Service
The Royal Borough of Kensington and Chelsea
Tri-borough Audit, Risk, Fraud and Insurance
£55,000 - £59,999
Plus PRP
FTE : 1



Director of Financial Management
The Royal Borough of Kensington and Chelsea
Corporate Finance and Systems
£80,000 - £84,999
Plus PRP
FTE : 1

Head of Financial Systems
The Royal Borough of Kensington and Chelsea
Corporate Finance and Systems
£55,000 - £59,999
Plus PRP
FTE : 1

Chief Executive WCC
City of Westminster
Chief Executive's Office



Director of Corporate Services
City of Westminster
Executive Director of Shared Corporate Services

Bi Borough Executive Director of Children's Services
City of Westminster
Tri-borough Children's Services

Bi Borough Executive Director of Adults Social Care
City of Westminster
Director of Finance and Resources





Director of Corporate Services
City of Westminster
Executive Director of Shared Corporate Services



Director of Law
City of Westminster
Legal Services





Director of Law
City of Westminster
Legal Services

Chief Solicitor, Property and Planning
The Royal Borough of Kensington and Chelsea
Legal Services
£90,000 - £94,999
Plus PRP
FTE : 1

Bi Borough Executive Director of Children's Services
City of Westminster
Tri-borough Children's Services

Bi-Borough Director of Education
The Royal Borough of Kensington and Chelsea
Education
£115,000 - £119,999
Plus PRP
FTE : 1

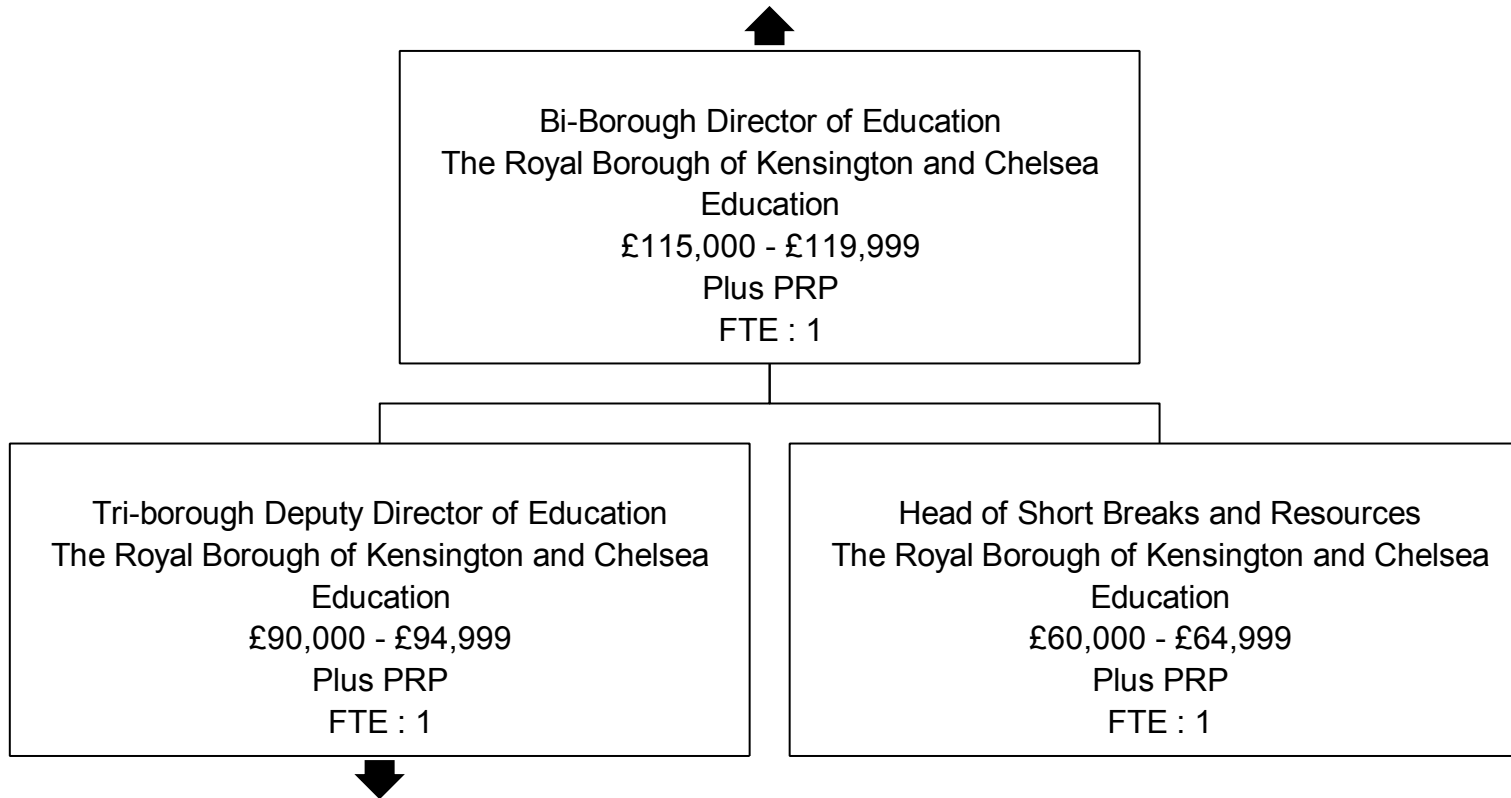
Director for Family Services
The Royal Borough of Kensington and Chelsea
Family Services 1
£95,000 - £99,999
Plus PRP
FTE : 1

Director of the Centre for Social Work
The Royal Borough of Kensington and Chelsea
Centre for Social Work
£95,000 - £99,999
Plus PRP
FTE : 0.6

Head Safeguarding, Review & Quality Ass
The Royal Borough of Kensington and Chelsea
Safeguarding, Review and Quality Assurance
£70,000 - £74,999
Plus PRP
FTE : 1

Director of Operations and Programmes
The Royal Borough of Kensington and Chelsea
Operations and Programmes







Tri-borough Deputy Director of Education
The Royal Borough of Kensington and Chelsea
Education
£90,000 - £94,999
Plus PRP
FTE : 1

Head of Local Offer & SEN Outreach
The Royal Borough of Kensington and Chelsea
Education
£60,000 - £64,999
Plus PRP
FTE : 1

Tri-borough Head, Music Hub
The Royal Borough of Kensington and Chelsea
Education
£55,000 - £59,999
Plus PRP
FTE : 1



Director for Family Services
The Royal Borough of Kensington and Chelsea
Family Services 1
£95,000 - £99,999
Plus PRP
FTE : 1

Head of Early Help and Social Work
The Royal Borough of Kensington and Chelsea
Family Services 1
£70,000 - £74,999
Plus PRP
FTE : 1

Head of Social Work for Families
The Royal Borough of Kensington and Chelsea
Family Services 1
£70,000 - £74,999
Plus PRP
FTE : 1

Head of Family and Care Resources
The Royal Borough of Kensington and Chelsea
Family Services 1
£70,000 - £74,999
Plus PRP
FTE : 1

Head of Clinical Practice
The Royal Borough of Kensington and Chelsea
Family Services 1
£70,000 - £74,999
Plus PRP
FTE : 1

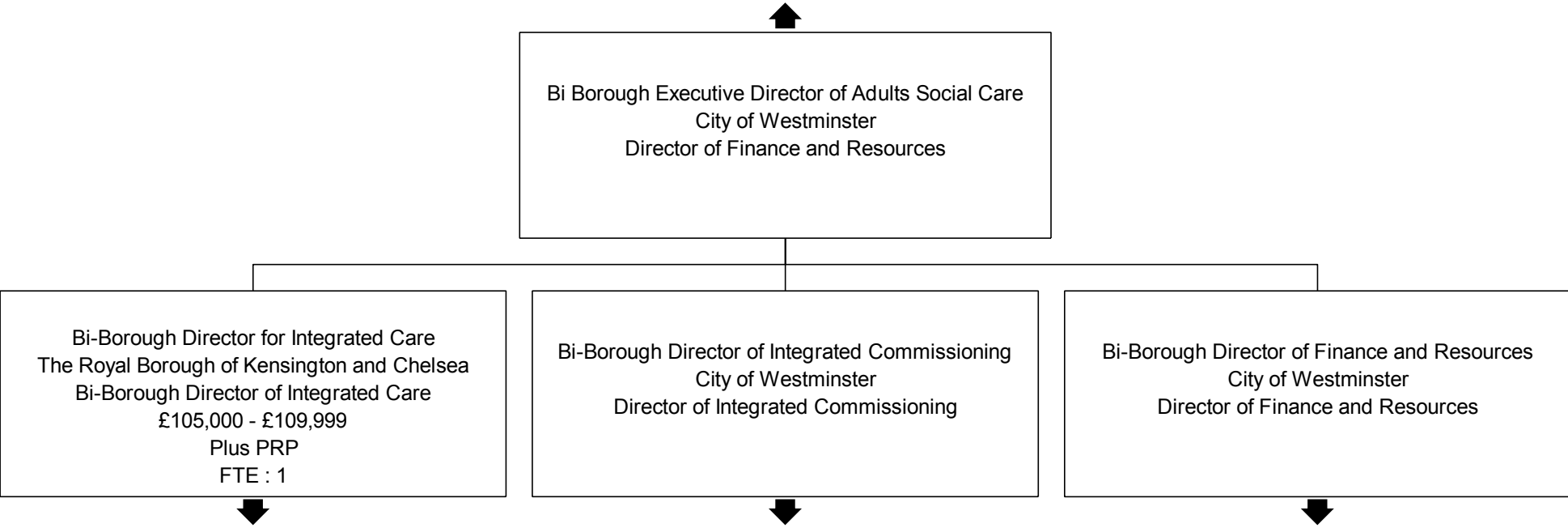
Head of Social Work for Families
The Royal Borough of Kensington and Chelsea
Family Services 1
£65,000 - £69,999
Plus PRP
FTE : 1

TriB Head of Virtual School & College
The Royal Borough of Kensington and Chelsea
Family Services 1
£55,000 - £59,999
Plus PRP
FTE : 1



Director of Operations and Programmes
The Royal Borough of Kensington and Chelsea
Operations and Programmes

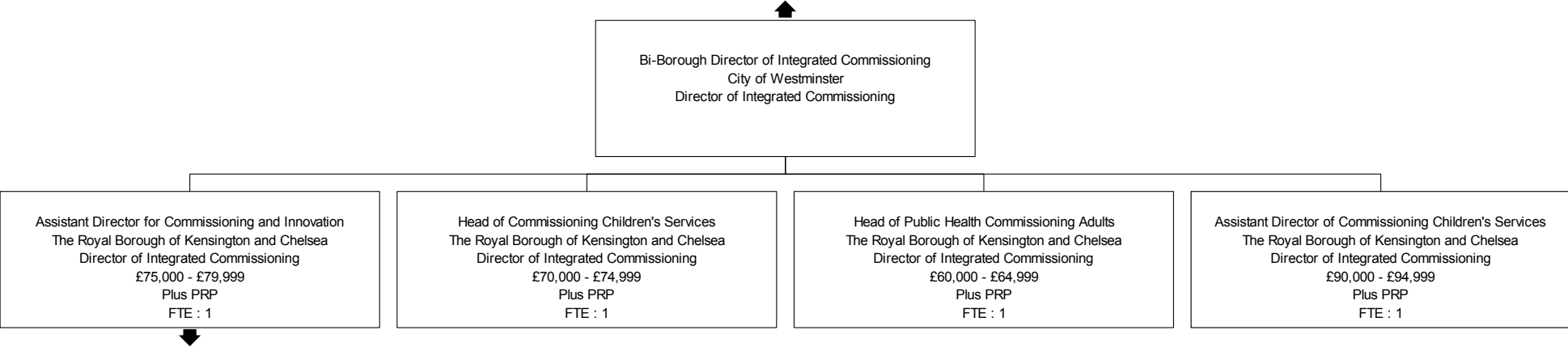
Head of Business Intelligence and Strategy
The Royal Borough of Kensington and Chelsea
Operations and Programmes
£70,000 - £74,999
Plus PRP
FTE : 1





Bi-Borough Director for Integrated Care
The Royal Borough of Kensington and Chelsea
Bi-Borough Director of Integrated Care
£105,000 - £109,999
Plus PRP
FTE : 1

Head of Service Care and Assessment RBKC
The Royal Borough of Kensington and Chelsea
Bi-Borough Director of Integrated Care
£65,000 - £69,999
Plus PRP
FTE : 1





Assistant Director for Commissioning and Innovation
The Royal Borough of Kensington and Chelsea
Director of Integrated Commissioning
£75,000 - £79,999
Plus PRP
FTE : 1

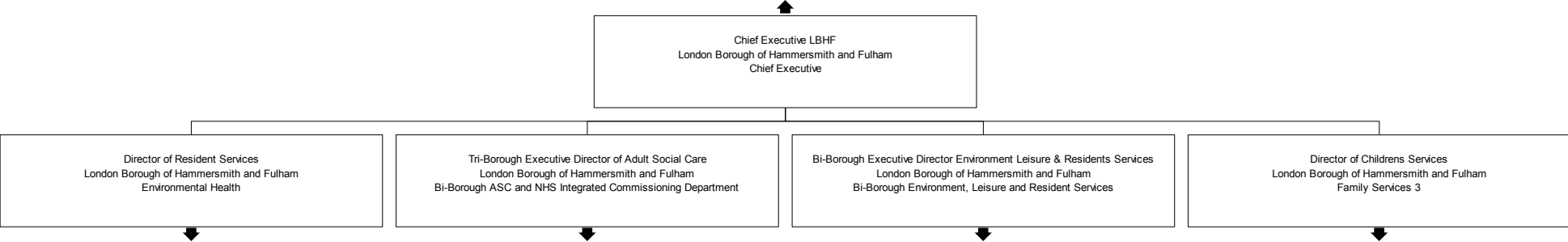
Head of Travel Care Commissioning
The Royal Borough of Kensington and Chelsea
Director of Integrated Commissioning
£55,000 - £59,999
Plus PRP
FTE : 1

Head of Commissioning
The Royal Borough of Kensington and Chelsea
Children's Services Commissioning
£70,000 - £74,999
Plus PRP
FTE : 0.8



Bi-Borough Director of Finance and Resources
City of Westminster
Director of Finance and Resources

Head of Business Services
The Royal Borough of Kensington and Chelsea
Director of Finance and Resources
£70,000 - £74,999
Plus PRP
FTE : 1





Director of Resident Services
London Borough of Hammersmith and Fulham
Environmental Health

Bi-Borough Head of Environmental Health - Commercial
The Royal Borough of Kensington and Chelsea
Environmental Health
£70,000 - £74,999
Plus PRP
FTE : 1



Tri-Borough Executive Director of Adult Social Care
London Borough of Hammersmith and Fulham
Bi-Borough ASC and NHS Integrated Commissioning Department



Tri-Borough Director for Strategic Commissioning and Enterprise
London Borough of Hammersmith and Fulham
Director of Integrated Commissioning



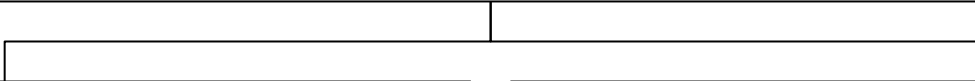


Tri-Borough Director for Strategic Commissioning and Enterprise
London Borough of Hammersmith and Fulham
Director of Integrated Commissioning

Head of Commissioning Prevention
The Royal Borough of Kensington and Chelsea
Director of Integrated Commissioning
£65,000 - £69,999
Plus PRP
FTE : 1



Bi-Borough Executive Director Environment Leisure & Residents Services
London Borough of Hammersmith and Fulham
Bi-Borough Environment, Leisure and Resident Services



Strategic Head of Performance & Transformation
The Royal Borough of Kensington and Chelsea
Customer and Business Development
£60,000 - £64,999
Plus PRP
FTE : 1

Bi-Borough Director for Cleaner Greener & Cultural Services
London Borough of Hammersmith and Fulham
Cleaner, Greener and Cultural Services





Bi-Borough Director for Cleaner Greener & Cultural Services
London Borough of Hammersmith and Fulham
Cleaner, Greener and Cultural Services

Head of Greener Living
The Royal Borough of Kensington and Chelsea
Cleaner, Greener and Cultural Services
£60,000 - £64,999
Plus PRP
FTE : 1

Head of Waste Contracts and Enforcement
The Royal Borough of Kensington and Chelsea
Cleaner, Greener and Cultural Services
£60,000 - £64,999
Plus PRP
FTE : 1



Director of Childrens Services
London Borough of Hammersmith and Fulham
Family Services 3



Asisstant Director of Family Services
London Borough of Hammersmith and Fulham
Family Services 3





Asisstant Director of Family Services
London Borough of Hammersmith and Fulham
Family Services 3

Head of Tri-borough Fostering & Adoption
The Royal Borough of Kensington and Chelsea
Family Services 3
£75,000 - £79,999
Plus PRP
FTE : 1

Head of Clinical Practice1
The Royal Borough of Kensington and Chelsea
Family Services 3
£65,000 - £69,999
Plus PRP
FTE : 0.5