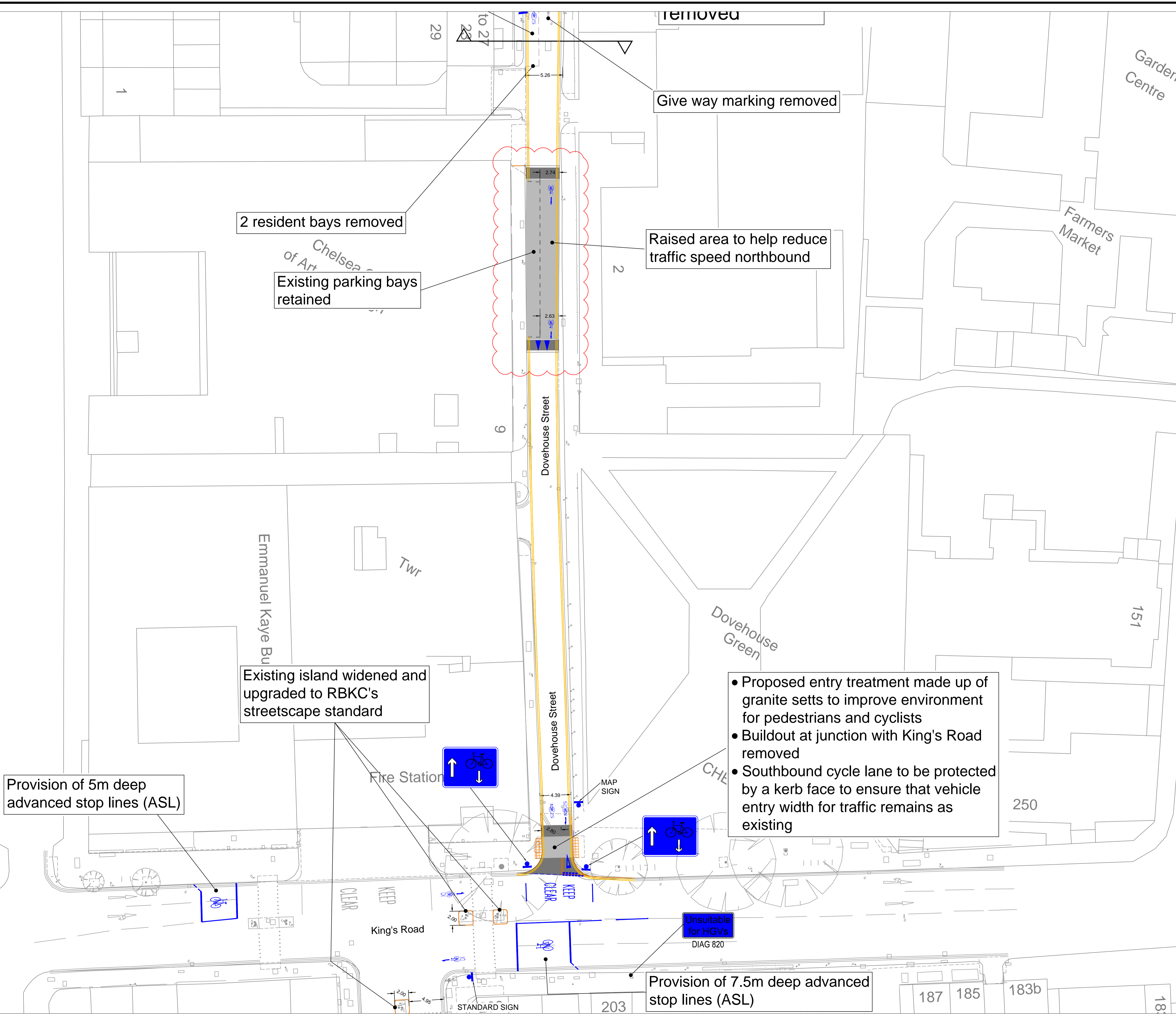




Notes



Rev	Description	By	Date	Chk
2	RAISED AREA INCLUDED ON DOVEHOUSE STREET	EE	21.09.15	

DEPARTMENT OF TRANSPORTATION AND HIGHWAYS
Traffic & Transportation Policy Service

The Royal Borough of Kensington and Chelsea
Town Hall, Hornton Street, London, W8 7NX
Telephone: (020) 7361 3374
Fax: (020) 7361 2796

Project
CENTRAL LONDON CYCLING GRID

Title
RBKC QUIETWAY ROUTE PROPOSALS
Q49 QUIETWAY (PHASE 1)
DOVEHOUSE STREET/ KING'S ROAD

Scale 1:250	Drawn EE	Checked Date	A1
Date 13.08.15	Date		
Drawing Number X5015-CYGR-ODES-Q49-004			Rev 2

Cad File: 'DRAWINGS'...