

May 2021

Page 2
Kingspan product at
Barlby and Kensington
Queensmill Schools

page 7 and 9
Updates from Government
on the Grenfell site and
memorial

Page 11
Your Census 2021



**High
Streets buzz
as businesses
return page 3**

About your North Ken News

North Ken News is a dedicated newsletter for North Kensington communities produced by Kensington and Chelsea Council.

Have you got news for us?

We are always on the lookout for good news stories, whether they are about an event you are running, a local hero who is working wonders in your community or a programme or course that local residents could benefit from.

If you would like to get in touch with an idea or story, please email northkennews@rbkc.gov.uk and we'll get back to you as soon as we can.

Tell us what you think?

We're interested in hearing your feedback about North Ken News. We want to produce a newsletter which you enjoy reading and you find useful, so please let us know what you'd like to see more of. Email us at northkennews@rbkc.gov.uk

Covid-19

Information on our Coronavirus response and guidance is correct at the time of going to press. For the latest updates, visit www.rbkc.gov.uk/coronavirus

Staying in touch

There are other ways to keep up to date with borough-wide news as well as news and announcements from Kensington and Chelsea Council.

-  [@RBKC](https://twitter.com/RBKC)  www.facebook.com/royalborough
-  www.nextdoor.co.uk
-  www.instagram.com/kensingtonandchelseacouncil

For updates on Grenfell

-  [@GrenfellUpdates](https://twitter.com/GrenfellUpdates)
-  www.rbkc.gov.uk/grenfell
-  To stay up to date with the latest news and events sign up to our newsletter mailing list, visit www.rbkc.gov.uk and search K&C Life

If you would like to opt out of receiving North Ken News or would prefer to read it online, please let us know at northkennews@rbkc.gov.uk

Kingspan product at Barlby and Kensington Queensmill Schools

Following the launch of an urgent investigation on Saturday 17 April, the Council has updated local communities on the use of Kingspan products at the new Barlby and Kensington Queensmill schools.

Following a visit to the site to seek assurances, Cllr Kim Taylor-Smith, deputy leader of the Council, said:

"I was shocked by the evidence that emerged in module two of the Grenfell Tower Inquiry, and I fully understand that this isn't just an issue of safety and products – it is an issue of suppliers and trust.

"Work with any Kingspan products has been halted and is subject to a review. The council began talks with contractors immediately to establish how much of this product has been used already, where, and what the next steps should be.

"We have asked project managers at Mace to remove any unused product from the site.

"It is important to stress that the product found was not cladding, it is not the same product used on Grenfell Tower. It is used in flooring systems and insulation, normally as a barrier to prevent issues with moisture. It is also deemed safe to use in line with building regulations.

"As a further measure, I have also asked officers to audit new builds currently underway in the borough.

"We apologise for the distress this has caused, especially at such an incredibly difficult time, but we will fix this, and fix it urgently."

Updates on progress will be shared on rbkc.gov.uk and also on our social media channels.



High streets buzz as businesses reopen

Kensington and Chelsea’s high streets are buzzing with life following the easing of lockdown restrictions on Monday 12 April.

The Council has been working closely with businesses to prepare them for reopening, ensuring that they have the right Covid-secure measures in place so residents and visitors on our high streets can enjoy them safely.

At Portobello and Golborne Market, stalls selling non-essential items, including antiques, clothing, accessories and more, have returned along with food stalls, so you can enjoy the full range of what your market has to offer again.

If you’re visiting our high streets or indoor public places, please keep following the latest Government guidance: wash your hands regularly, wear a face covering indoors unless exempt and maintain social distancing.

We’ll be spotlighting some of our fantastic local businesses on social media in a series of videos, so keep an eye on our Twitter, and Instagram pages for more:

 @RBKC  @kensingtonandchelseacouncil



An update on vaccination

With over 32 million people having received their first vaccine and everyone over 50 being offered a vaccination, the NHS is now offering vaccinations to those aged 45 and over.

Make sure you book your vaccination as soon as possible to help protect yourself, your family and friends.



For information on vaccinations visit www.nhs.uk/conditions/coronavirus-covid-19/coronavirus-vaccination/book-coronavirus-vaccination/ and see page 8.

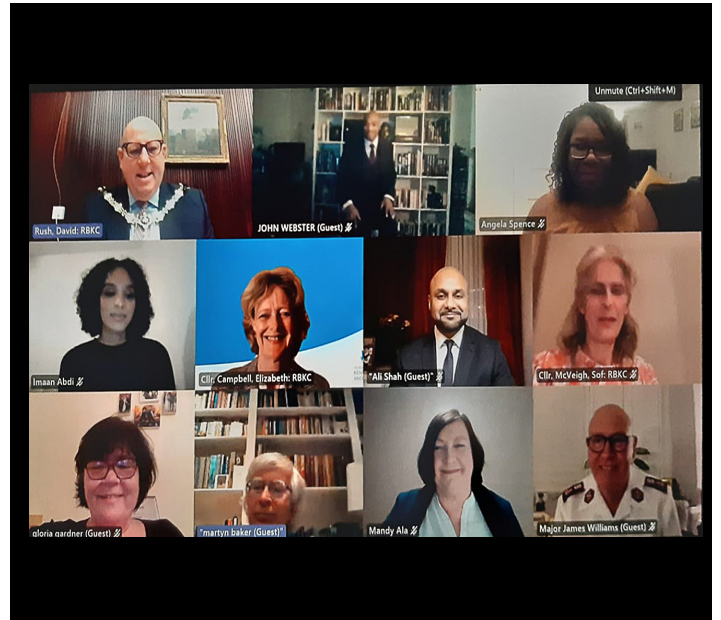
Virtual awards ceremony celebrates Mayor's Awards winners

Winners of 19 Mayor's Awards were invited to attend an online ceremony hosted by the Mayor of Kensington and Chelsea, Cllr Gerard Hargreaves at the end of March.

The ceremony was livestreamed to family, friends and colleagues of the winners and was watched live by over 100 people.

The recipients, who were put forward by members of the public, made outstanding contributions to the community during the pandemic, from providing hot meals and feeding hundreds of people each week, to delivering shopping and supplies to vulnerable residents in what has been a challenging year for all.

One winner, Master John Webster, was recognised for individual contribution for delivering over 1,500 online Taekwondo classes during the pandemic. He said: "I am honoured and pleasantly surprised to receive the Mayor's Award. When I started at The Curve two and half years ago, I did not envisage how good these students would become. They have stayed focused and motivated, even throughout the lockdown."



New food waste trial launched on Lancaster West Estate

The Lancaster West Estate is the first housing estate in Kensington and Chelsea to introduce food waste recycling for residents. The new scheme launches on Tuesday 4 May, on the Walkways, for around 400 homes.

Residents can recycle their unwanted food waste and leftovers, using a kitchen food

caddy with compostable liners. Three large food waste bins have been installed on the estate with metal lockable units to help keep vermin out and smells in.

Food waste collected will be used to generate electricity to power homes, and as a fertiliser to be used in farming. The new food waste recycling scheme is also part of Lancaster West Neighbourhood Team's ambitious plan to make the estate carbon neutral by 2030.

For more information, visit www.WeAreW11.org

Government encourages Community Testing

The Government is encouraging everyone, whether you've been vaccinated or not, to get tested twice a week to protect against another surge and to ensure new variants can't take hold. If you have no Coronavirus symptoms you should get tested twice a week with a free rapid Community Test.

Testing is in place to prevent asymptomatic people spreading the virus without realising. Please do not attend one of these sites if you have Coronavirus symptoms.

Kensington Leisure Centre

Silchester Road, W10 6EX

8.30am to 4.30pm, Monday and Wednesday

10am to 4pm Tuesday, Thursday, Friday, Saturday and Sunday.

Kensington Town Hall

Hornton Street, W8 7NX

8am to 5.30pm Monday and Wednesday

8.30am to 5.30pm Tuesday, Thursday and Friday, and **10am to 4pm** at weekends.

Chelsea Old Town Hall

King's Road, SW3 5EE

8am to 4.30pm, Monday and Wednesday

10am to 4pm Tuesday, Thursday, Friday, Saturday and Sunday

The Ismaili Centre

1 Cromwell Gardens, SW7 2SL

8am to 4.30pm Monday and Wednesday

10am to 4pm Tuesday, Thursday, Friday, Saturday and Sunday

Testing sites are available around the borough at Kensington Olympia, Royal Hospital and Malton Road for people displaying symptoms.

If you have a high temperature; a new, continuous cough; or loss or change of taste or smell you should book a test via NHS online or by calling 119.

In addition to being able to go to one of our community testing venues to get tested any day, you can collect home testing kits from any of the testing centres. You can collect two test boxes in one visit, which will be enough for one week's worth of tests.

You can also order home testing kits online at www.gov.uk/order-coronavirus-rapid-lateral-flow-tests



Kensal Canalside is changing

The Council has been working with the local community and landowners to prepare guidance for new development on the land currently occupied by the Sainsbury's superstore and gasholders in North Kensington. You can read the full draft guidance and submit comments at www.planningconsult.rbkc.gov.uk.

This consultation closes on Monday 24 May 2021.

KENSAL
CANALSIDE

Bugs check-in to new insect hotels

Fifteen new bug hotels are coming to Kensington and Chelsea as part of the Council's strategy to improve habitats for local pollinators. The bug hotels will be provided by ACAVA's Maxilla Men's Shed and were co-created with Idverde UK and Hands on London.

The sites will act as shelter and nesting sites for local bumblebees, wild bees, butterflies and other insects which are crucial to the preservation of local ecology.

We can't wait for the first guests to crawl, flutter and buzz in. Find out more about the Council's Bee Superhighway project, visit www.rbkc.gov.uk and search Bee Superhighway

For more information on ACAVA's Maxilla Men's Shed, visit www.acava.org and search **Maxilla Men's Shed**.



Break a sweat at your local leisure centre

Our leisure centres have reopened! Kensington Leisure Centre and Chelsea Sports Centre have begun a phased reopening to the public. Stop by for a workout or to take advantage of some outdoor activities.

Members can continue to attend online classes and at home workouts through the Better app, available on the app store. Residents can also take part in our virtual offer delivered by the Council's Sports Development team as part of our Active for Life programme.

Visit www.rbkc.gov.uk and search activities for adults.



Grenfell Tower site news from Government

Grenfell
community

updates

Grenfell Tower rewrapping

The white outer wrapping around Grenfell Tower deteriorates over time and is replaced once a year. The current re-wrap started on 6 March and is scheduled to take around 10 weeks, depending on the weather. For further details, see the leaflet sent to residents in March in 'Publications' at www.gov.uk/grenfell-community-updates

Grenfell Tower safety works

Planned safety works are continuing and residents have had their questions answered at online Q&A meetings – find out more in 'Publications' at www.gov.uk/grenfell-community-updates. Contact GrenfellTowerSite@communities.gov.uk, or call **0303 444 0011**, if you have any questions on the safety works.

Substation move

Electricity is currently provided to parts of the Lancaster West estate by an electricity substation on the ground floor of Grenfell Tower. Due to planned and ongoing safety works involving the installation of new 'props' within the Tower, the substation is

being moved to a new location behind the leisure centre. For more information, see the letter from the Ministry of Housing Communities and Local Government (MHCLG) sent to residents in April or go to www.gov.uk/grenfell-community-updates, where you can also find more information on the safety works in 'Publications'.

Share your thoughts and questions about the future of Grenfell Tower

You can do this by speaking with Kaizen, an independent community engagement organisation which is working with both MHCLG and the independent Grenfell Tower Memorial Commission:

- Email info@kaizen.org.uk
- Call **020 7082 5505** or text **07984 434 855** to arrange a phone conversation

Sign up to receive the latest Grenfell community updates at bit.ly/govuk-sign-up

Look out for further information on the Tower site from the MHCLG and find out how you can share your views.

Remember to vote

By now you should have registered to vote in the next Mayor of London and London Assembly elections taking place on Thursday 6 May.

To take part, you must:

- be registered to vote
- live in London
- be at least 18 years old on the day of the elections
- be a British citizen, a European Union citizen or a Commonwealth citizen who has or does not require leave to remain in the UK.

Certain polling stations within Kensington and Chelsea have changed. To find out where your nearest voting polling station is, visit www.wheredoivote.co.uk



Aged 45+? Drop-in for your vaccine

The NHS is currently offering the Coronavirus vaccine to the following people most at risk from Coronavirus:

- people aged 45 and over
- people who are at high risk from Coronavirus (clinically extremely vulnerable)
- people who are at moderate risk from Coronavirus (clinically vulnerable)
- people who live or work in care homes
- health and social care workers
- people who are eligible for Carer's Allowance

If you are eligible you don't need to book for your first jab, just come to the Science Museum between 9am and 7pm, any day.

Please bring:

- Proof of your age
- Proof of your name and address
- Your NHS number if you have it (you can still get vaccinated if you don't have your NHS number)



Latimer Community Art Therapy returns

After a year of switching between online activities and limited in-centre sessions, The HD Kid's Club and Youth club, run by Latimer Community Art Therapy, are back at Henry Dickens Community Centre offering activities, art therapy and services to local people of all ages. The centre reopened on Wednesday 7 April and welcomed back younger residents to their holiday crafts, play and sports activities.

While some sessions are now able to return given the easing of Government lockdown, other activities such as Yoga and Pilates will remain online as they proved hugely popular and provided access to those who wouldn't usually be able to access sessions offline.

Alongside the reopening of the centre, the multi-use games area has been improved with a higher more robust fence surrounding the pitch. This was undertaken following feedback from the Henry Dickens Youth RA and FutureHood.



To find out more about what's on offer and how you can get involved, visit the Instagram page [@hdcommunitycentre](#) or call **07933 539418**

Grenfell Tower Memorial Commission update

Share your ideas about the future memorial

'The memorial process is central to our community and vice versa – our community is central to the memorial!' Susan Al-Safadi, pictured right.

The independent Grenfell Tower Memorial Commission is working with the community to create a fitting memorial. For more information, go to www.grenfelltowermemorial.co.uk, or follow them on Twitter [@GrenfellTowerMC](https://twitter.com/GrenfellTowerMC).

Grenfell Tower Memorial Commission

The Memorial Commission holds monthly meetings, currently online, where you can talk to the community representatives and ask questions – see the news section at www.grenfelltowermemorial.co.uk for dates and joining details, or contact GTMCSecretariat@communities.gov.uk.

The next meeting for Lancaster West Estate residents is on 26 May from 6pm to 7pm.

If you have Microsoft Teams, use the QR code to join the meeting, or you can dial in on **020 3795 5763** using conference ID: 466 381 200#



◀ Scan the QR Code

The Memorial Commission is keen to hear from as many of you as possible, in whatever way suits you best. You can contact the community representatives directly in the '[Contact](#)' section of the website.



Susan Al-Safadi, one of the Memorial Commission's community representatives and Lancaster West Estate resident.

On the website, you can also:

- Read the latest community representative blog
- Sign up for automatic email updates and the new monthly e-newsletter
- Discover the different ways you can share your thoughts on a memorial, and see what the Memorial Commission has heard from people so far, in the 'ideas-gathering' section
- See a timeline showing the Memorial Commission's journey to a memorial in the 'About us' section.

Visit: www.grenfelltowermemorial.co.uk

What libraries are open in the borough?

We're reopening more of our libraries for longer with increased services in line with the Government's roadmap out of lockdown.

From Monday 12 April, Brompton Library joined North Kensington Library, Kensington Central Library and Chelsea Library in opening to the public.

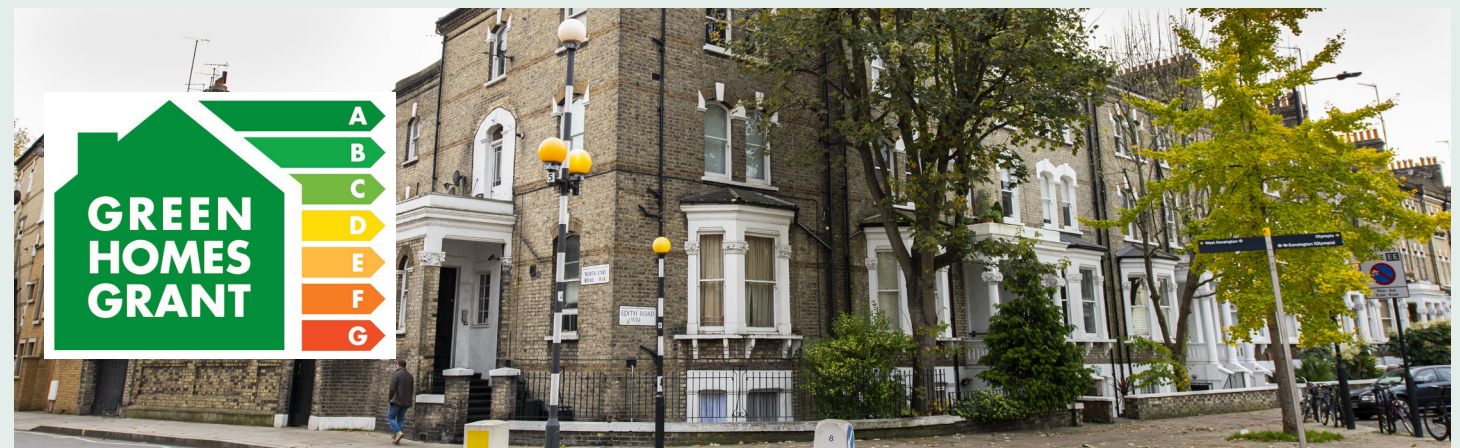


We've welcomed back customers with heightened hygiene and social distancing measures in place to ensure everyone can safely enjoy all that our libraries and Local Studies have to offer.

Brompton, Chelsea, Kensington Central and North Kensington libraries are open for:

- Browsing
- Answering enquiries
- Limited study spaces
- Access to computers, which can now be booked in advance
- Reservations, which are still free of charge for the time being

Kensal and Notting Hill Gate libraries are still closed – to find out the latest about their reopening, follow the Council's and the Council's Library Twitter feeds:



Could you be eligible for the Green Homes Grant?

Worried about your energy bills and keeping warm next winter? Those living in colder and less efficient properties may be eligible for up to £10,000 of grant funding to cover the installation of efficiency measures, such as low carbon heating systems, insulation, and smart heating controls.

Residents who have a total household income of £30,000 or less per year and who live in homes with an energy rating of E, F, or G may apply to take part in the scheme by visiting <https://london.greendocitors.org.uk/green-homes-grant/> to complete the simple web form or calling the GHG: LAD Helpline on **0800 083 2265**.

For more information please visit www.rbkc.gov.uk and search Green Homes Grant.

Your Census 2021, our snapshot of life in London

To celebrate the once-in-a-decade Census survey, the Council recently launched the Census 2021 Time Capsule photo challenge encouraging Londoners to share a snapshot of their lives over the past year.

The winning entry was submitted by 14-year-old Yoana Yakimova, a student of The Quest Academy in South Croydon (right).

“I chose this blue diary because I like to write everything that I find interesting. The shoes are a gift from my mother who has always been by my side. The airplane represents me and how I love to travel. The bracelet is a special gift from my best friend, it also links to the airplane because this year I am planning on going to the place where she bought it (her home country). Lastly the roses represent my favourite thing.”

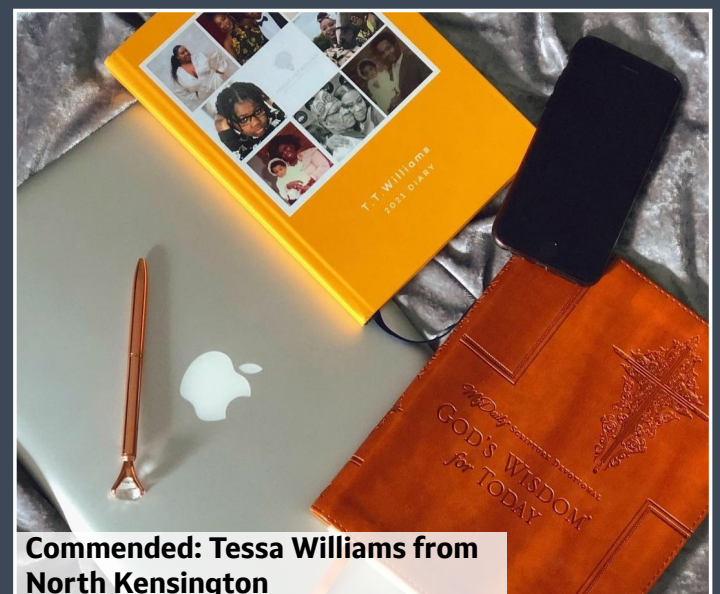
Delighted to have won, Yoana added: *“My family already has completed the census and I entered the competition not only because my school told me about the opportunity, but also because I get to share my interests with others!”*



Winner: Yoana Yakimova



Instagram user @paprikasart2017 from North Kensington



Commended: Tessa Williams from North Kensington

Also pictured, an entry from North Kensington resident Tessa Williams.

It's not too late to complete your census which helps your borough to allocate the required services and funding for your local community, so don't miss out. It is entirely anonymous and does not affect any benefits or your immigration status in any way.

Visit www.census.gov.uk to fill it in or to request your unique access code. You can complete it online or request a paper copy. For extra help, call the free helpline number, **0800 141 2021**, or for assistance in other languages, call **0800 587 2021**.

Activities return to The Curve

The Curve Community Centre began welcoming back residents from Monday 19 April for specific classes and activities permitted within Government guidelines.

The centre is open Monday to Friday from 9am to 5pm for pre-booked activities and services. Throughout April, residents have been enjoying Stay and Play session for children and parents, ICT and English classes presented by Nova and CNWL talking therapies.

Residents are asked to wear masks while on the premises and follow social distancing and other Coronavirus safety measures.

To find out more about events at The Curve, visit www.rbkc.gov.uk/curve-events, call 020 7221 9836 or email thecurve@rbkc.gov.uk

The Curve is located at 10 Bard Road, W10 6TP.



Early May and Spring Bank Holiday bin collections



There will be rubbish and recycling collections over the bank holiday period, on Monday 3 and Monday 31 May. For residents who receive a food waste collection service on Monday, your food waste will be collected as normal.

There won't be any bulky household waste (TB4B) collections on Monday 3 and Monday 31 May.

To check your collection days, visit www.rbkc.gov.uk/collections