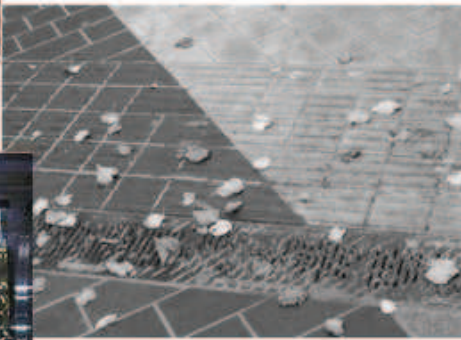


Reference number 102338

EXHIBITION ROAD PHASE 3 REPORT



EXHIBITION ROAD MONITORING – PHASE 3

EXHIBITION ROAD PHASE 3 REPORT

IDENTIFICATION TABLE

Client/Project owner	Royal Borough of Kensington and Chelsea
Project	Exhibition Road Monitoring – Phase 3
Study	Exhibition Road Phase 3 Report
Type of document	Final Report
Date	15/08/2013
File name	Exhibition Road Phase 3 Report
Framework	
Reference number	102338
Confidentiality	
Language	
Number of pages	26

APPROVAL

Version	Name	Position	Date	Modifications	
1	Author	Alexis Fuller	Analyst	10/07/2013	
	Checked by	Glenn Higgs	Managing Consultant	11/07/2013	
	Approved by	Glenn Higgs	Managing Consultant	11/07/2013	
2	Author	AF	Analyst	14/08/2013	Amended in response to Client comments on V1
	Checked by	GH	Managing Consultant	15/08/2013	
	Approved by	GH	Managing Consultant	15/08/2013	

TABLE OF CONTENTS

1.	SUMMARY	5
1.1	OBJECTIVES	5
1.2	STUDY SCOPE AND METHODOLOGY	5
1.3	RESULTS	5
2.	INTRODUCTION	7
2.1	OBJECTIVES	7
2.2	CHANGES BETWEEN MONITORING SURVEYS	7
2.3	STUDY SCOPE	7
2.4	REPORT STRUCTURE	9
3.	PEDESTRIAN CROSSING MOVEMENTS AND COUNTS	11
3.1	PEDESTRIAN CROSSING MOVEMENTS	11
3.2	PEDESTRIAN COUNTS	12
4.	VEHICLE FLOW AND SPEED	15
4.1	VEHICLE FLOW	15
4.2	VEHICLE SPEED	16
5.	STOPPING ABRUPTLY AND ACCIDENTS	19
5.1	STOPPING ABRUPTLY	19
5.2	ACCIDENTS	19
6.	PARKING OCCUPANCY AND VEHICLES STOPPING	20
6.1	PARKING OCCUPANCY	20
7.	SAFE ZONE AND WRONG WAY MOVEMENTS	21
7.1	SAFE ZONE MOVEMENTS	21
7.2	WRONG WAY MOVEMENTS	23
8.	BUS STOP BEHAVIOUR	25
8.1	BUS STOP BEHAVIOUR	25

LIST OF FIGURES

Figure 2.1 Survey Locations	7
Figure 3.1 Pedestrian Crossing Movements	12
Figure 3.2 Pedestrian Counts	14
Figure 4.1 Total Vehicle Flows	16
Figure 7.1 Safe Zone Movements	22
Figure 7.2 Wrong Way Movements	24

LIST OF TABLES

Table 2.1 Phase 3 Sunrise and Sunset Times	8
Table 2.2 Phase 1 and 2 Sunrise and Sunset Times	9
Table 3.1 Pedestrian Crossing Movements	11
Table 3.2 Pedestrian Counts	13
Table 4.1 Vehicle Flow	15
Table 4.2 85th Percentile Vehicle Speeds	17
Table 6.1 Parking Space Occupancy	20
Table 6.2 Parking Spaces	20
Table 7.1 Safe Zone Movements	21
Table 7.2 Wrong Way Movements	23
Table 8.1 Bus Stop Behaviour	25

LIST OF APPENDICES

Appendix A – Screenline Locations
Appendix B – Pedestrian Crossing Movements
Appendix C – Screenline Pedestrian Counts
Appendix D – Screenline Vehicle Counts
Appendix E – Vehicle 85 th Percentile Speeds
Appendix F – Vehicles Stopping Abruptly
Appendix G – Accidents
Appendix H – Parking Occupancy
Appendix I – Illegal Vehicle Movements
Appendix J – Bus Stop Behaviour

1. SUMMARY

1.1 Objectives

1.1.1 MVA was commissioned by the Royal Borough of Kensington and Chelsea to provide an assessment of user behaviour and interaction on Exhibition Road. This was the third part (Phase 3) of a four part monitoring project for the Scheme.

1.2 Study Scope and Methodology

1.2.1 The road was divided into eight Sections for which data was collected to enable a quantitative assessment of a range of factors. These factors were compared to the previous Exhibition Road monitoring studies (Phase 1 and 2), performed twelve and six months previously. The factors considered were:

- Pedestrian counts and crossing movements;
- Vehicle flows and speeds;
- Stopping abruptly and accidents;
- Parking and stopping;
- Vehicle wrong way movements and movements in the safe zones; and
- Bus stop boarding/alighting and tripping.

1.3 Results

1.3.1 The factors were analysed in turn, grouped in chapters as listed above.

Pedestrian Crossing Movements and Counts

1.3.2 The crossing movements recorded in Phase 3 were broadly similar to those of the previous phases, though two sections exhibited a noticeable increase. There was no pattern across all three phases, with the exception of one section (Section 1) where movements had consistently decreased. Pedestrian counts varied against previous phases, both increasing and decreasing, with no clear pattern across the three phases.

Vehicle Flow and Speed

1.3.3 Vehicle flow was generally very similar to that of Phase 2, which was in turn slightly higher than that recorded in Phase 1. Vehicles speeds were consistent with the previous results, with the exception of a noticeable increase in one section (Section 4) and a noticeable decrease in another (Section 7).

Stopping Abruptly and Accidents

1.3.4 No incidents of stopping abruptly or any accidents were recorded. This is line with the previous surveys, where the number of incidents of stopping abruptly were minimal and there were also no accidents.

Parking Occupancy and Stopping

- 1.3.5 Levels of parking occupancy were very similar to the previous studies, although with a slight increase in the use of disabled spaces. Levels of vehicles stopping for no apparent reason increased slightly in Phase 3 compared to the previous phases.

Safe Zones and Wrong Way Movements

- 1.3.6 The numbers of vehicles entering the safe zones or travelling in the wrong direction were mostly similar to Phase 2, with some sections where these had increased (Sections 3, 4 and 7). The increases could generally be attributed to pedal cyclists.

Bus Stop Boarding/Alighting and Tripping

- 1.3.7 Minimal numbers of passengers were recorded boarding or alighting buses and there were no incidents of passengers tripping. Similar results were recorded in Phase 2.

2. INTRODUCTION

2.1 Objectives

2.1.1 MVA Consultancy was commissioned by the Royal Borough of Kensington and Chelsea to provide an assessment of user interaction and movement within Exhibition Road.

2.1.2 As defined in the Project Brief, the specific objectives of this study are as follows:

- Collate information on a similar basis to the first two Exhibition Road monitoring reports which can be used to generate trends on how the road is being used over a two year period. Users are defined as “motor vehicles, bicycles and pedestrians”; and
- For each of the two bus stops, count the number of people who trip over the kerb for the busiest hour (in terms of pedestrian numbers) during daylight hours and the busiest hour (in terms of pedestrian numbers) during the hours of darkness.

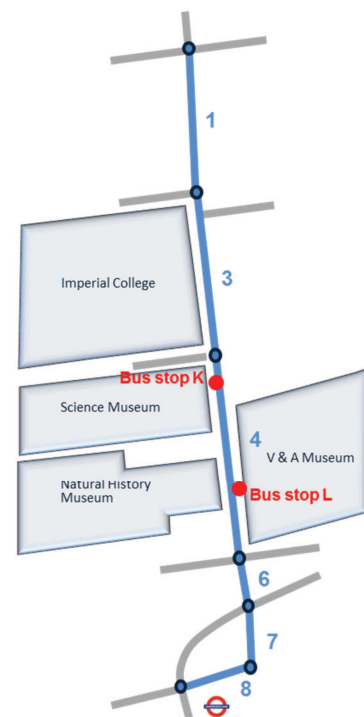
2.1.3 For the purpose of this report, this monitoring study is described as Phase 3. The study completed in November 2012 is described as Phase 2 and the study completed in May 2012 is described as Phase 1.

2.2 Changes Between Monitoring Surveys

2.2.1 In the period between Phase 1 and Phase 2, the Royal Borough of Kensington and Chelsea:

- Installed bollards at the junction of Cromwell Road to prevent traffic from entering the pedestrian area of Exhibition Road; and
- Installed bollards at the junction of Thurloe Place to prevent traffic from entering the pedestrian area of Exhibition Road.

Figure 2.1 Survey Locations



2.2.2 In the period between Phase 2 and Phase 3, the Royal Borough of Kensington and Chelsea:

- Installed a traffic island at the junction of Cromwell Road to reduce the incidence of traffic turning left from Cromwell Road into Exhibition Road.

2.3 Study Scope

2.3.1 The study covered the area shown in blue in **Figure 2.1**. Surveys were carried out according to the six numbered Sections shown in Figure 2.1. The Sections were as follows:

- Section 1: South of Kensington Gore to north of Prince Consort Road;
- Section 3: Princes Gardens to Imperial College Road;
- Section 4: Imperial College Road to north of Cromwell Gardens;
- Section 6: South of Cromwell Gardens to Thurloe Place;
- Section 7: South of Thurloe Place to Thurloe Street; and
- Section 8: Pedestrian area east of Cromwell Place to west of Thurloe Street.

2.3.2 The study was made up of two parts:

- Collection of observational data of pedestrian and driver movement; and
- Statistical analysis of the data.

2.3.3 Quantitative assessment was made of the following factors:

- Pedestrian crossing counts;
- Classified pedestrian counts;
- Classified traffic counts and traffic speed;
- Stopping abruptly;
- Accidents;
- Parking and stopping;
- Safe zone and wrong-way movements; and
- Bus stop boarding/alighting and tripping.

2.3.4 A five hour analysis was undertaken for data collected on Tuesday 14/05/2013, a weekday during term time, for the following time periods:

- 03:00-04:00;
- 08:00-09:00;
- 12:00-13:00;
- 17:00-18:00; and
- 21:00-22:00.

2.3.5 The bus stop surveys took place on Tuesday 04/06/2013, a weekday during term time, between 17:00-18:00 (daylight) and 21:00-22:00 (darkness). These times were the busiest hours of pedestrian activity in daylight and darkness respectively.

2.3.6 **Table 2.1** shows the sunrise and sunset times for the two survey dates.

Table 2.1 Phase 3 Sunrise and Sunset Times

DATE	SUNRISE	SUNSET
14/05/2013	05:10	20:44
04/06/2013	04:47	21:11

2.3.7 No anomalous behaviour or events were noted on either of the Phase 3 survey dates.

2.3.8 The Phase 3 data for 14/05/13 and 04/06/13 (bus stops) is compared with Phase 2 data from 13/11/2012 and 11/12/2012 (bus stops) and Phase 1 data from 08/05/2012 and 25/05/2012 (bus stops).

2.3.9 For reference the Phase 1 analysis was undertaken for 24 hours per day for:

- Wednesday 11/04/12 (weekday during Easter school holidays);
- Saturday 14/04/12 (Saturday during Easter school holidays); and
- Tuesday 08/05/12 (weekday during term time).

2.3.10 The Phase 1 bus stop survey data was collected on:

- Saturday 05/05/12 (Saturday during term time), 4pm – 5pm (daylight) and 9pm - 10pm (darkness);
- Tuesday 29/05/12 (weekday during term time) 5pm – 6pm (daylight) and 10pm-11pm (darkness); and
- Wednesday 30/05/12 (weekday during term time) 5pm – 6pm (daylight) and 10pm-11pm (darkness).

2.3.11 Phase 2 data was only collected on two days, 13/11/2012 and 11/12/2012 (bus stops) between 12:00-13:00 and 17:00-18:00.

2.3.12 Phase 1 and Phase 2 sunrise and sunset times are shown in **Table 2.2**

Table 2.2 Phase 1 and 2 Sunrise and Sunset Times

PHASE	DATE	SUNRISE	SUNSET
Phase 1	11/04/2012	6:13AM	19:51PM
Phase 1	14/04/2012	6:06AM	19:56PM
Phase 1	05/08/2012	5:25AM	20:31PM
Phase 1	08/05/2012	5:19AM	20:36PM
Phase 1	29/05/2012	4:51AM	20:31PM
Phase 1	30/05/2012	4:50AM	21:06PM
Phase 2	13/11/2012	7:16AM	16:13PM
Phase 2	11/12/2012	7:56AM	15:51PM

2.4 Report Structure

2.4.1 Chapter 3 describes pedestrian movements, that is classified flow counts in the safe zones and crossing movements recorded between the safe zones. As in all subsequent chapters the data sets for Phase 3 are compared against the pre-existing Phase 1 and Phase 2 counts.

2.4.2 Chapter 4 covers vehicle flows and speeds along Exhibition Road.

- 2.4.3 Chapter 5 focuses on potential conflicts, in terms of accidents and incidents of users of the space stopping abruptly.
- 2.4.4 Chapter 6 concerns patterns of parking behaviour and vehicles stopping for no apparent reason.
- 2.4.5 Chapter 7 describes movements of vehicles traveling in the wrong direction and those that enter the safe zones.
- 2.4.6 Chapter 8 summarises behaviour recorded at the bus stops within the survey site.
- 2.4.7 The full results for all sections are shown in Appendix B – Appendix J.

3. PEDESTRIAN CROSSING MOVEMENTS AND COUNTS

3.1 Pedestrian Crossing Movements

3.1.1 **Table 3.1** shows a comparison of crossing movements between the three phases. It also shows the range of results recorded across the day in Phase 1.

Table 3.1 Pedestrian Crossing Movements

TIME	SECTION 1			SECTION 3			SECTION 4			SECTION 6			SECTION 7			SECTION 8		
	P1	P2	P3	P1	P2	P3	P1	P2	P3	P1	P2	P3	P1	P2	P3	P1	P2	P3
03:00-04:00	0	1	0	8	3	10	0	0	0	11	2	0	5	0	0		6	0
00:00-08:00	0-32			5-89	Y		0-89			1-25		Y	0-133					
08:00-09:00	81	50	201	414	724	561	296	236	231	72	26	116	266	235	243		1075	1287
08:00-10:00	81-95	Y	Y	414-473	Y	Y	188-296			67-72	Y	Y	211-266					
12:00-13:00	77	72	133	634	869	762	609	587	371	143	87	216	364	248	295		825	811
10:00-16:00	61-98		Y	339-561	Y	Y	497-671		Y	67-143		Y	196-364					
17:00-18:00	80	51	144	589	890	1110	451	394	468	139	120	288	219	264	411		1207	1017
16:00-19:00	50-95		Y	418-533	Y	Y	293-526			111-139		Y	219-242	Y	Y			
21:00-22:00	23	21	17	298	255	277	82	93	96	74	33	84	156	193	115		530	516
21:00-00:00	4-23			72-298			26-82	Y	Y	40-74	Y	Y	43-156	Y				
TOTAL	261	195	495	1943	2741	2720	1438	1310	1166	439	268	704	1010	940	1064	6684	3643	3631

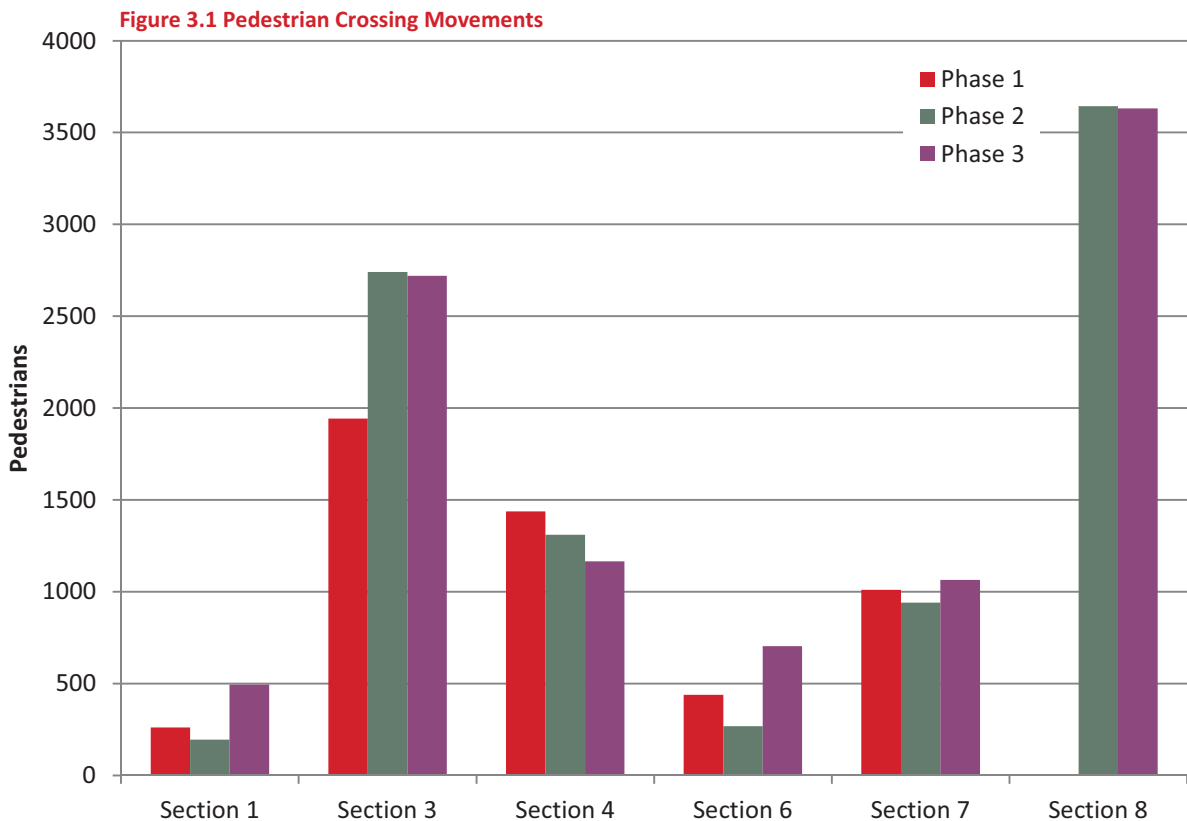
Y Phase 2/3 result is outside range of results for P1 for corresponding time period.

Numbers have decreased across three phases.

Numbers have increased across three phases.

3.1.2 Crossing counts are not shown for Section 8 - Phase 1 due to inaccuracies identified in Phase 1 counts. Section 8 effectively functions as a pedestrian zone and as such the number and variation in crossing movements between Phase 1 and Phase 2 is of less significance than for the other sections in terms of pedestrian behaviour and interaction between modes.

3.1.3 **Figure 3.1** shows a comparison of total crossing movements over the whole day for each of the phases.



3.1.4 **Table 3.1** and **Figure 3.1** show that:

- Total crossing movements are broadly similar across the three Phases. However if the focus is on the individual hours within each section a significant number of Phase 3 results are outside the range of Phase 1 results for the corresponding time period.
- Section 1 and Section 6 display noticeable increases in total crossing movements in Phase 3 compared to the previous two phases. In Section 1 this increase amounts to around 200 extra crossing movements, which is a greater than 90% increase on Phase 1. In Section 6 this increase is about 250 movements or a 60% increase against Phase 1.
- There is no clear pattern across the total movements for the three phases with the exception of Section 4, where the number of crossing movements has declined with each recording phase.

3.2 Pedestrian Counts

3.2.1 **Table 3.2** shows a comparison of pedestrian counts between the three phases. It also shows the range of results recorded across the day in Phase 1.

Table 3.2 Pedestrian Counts

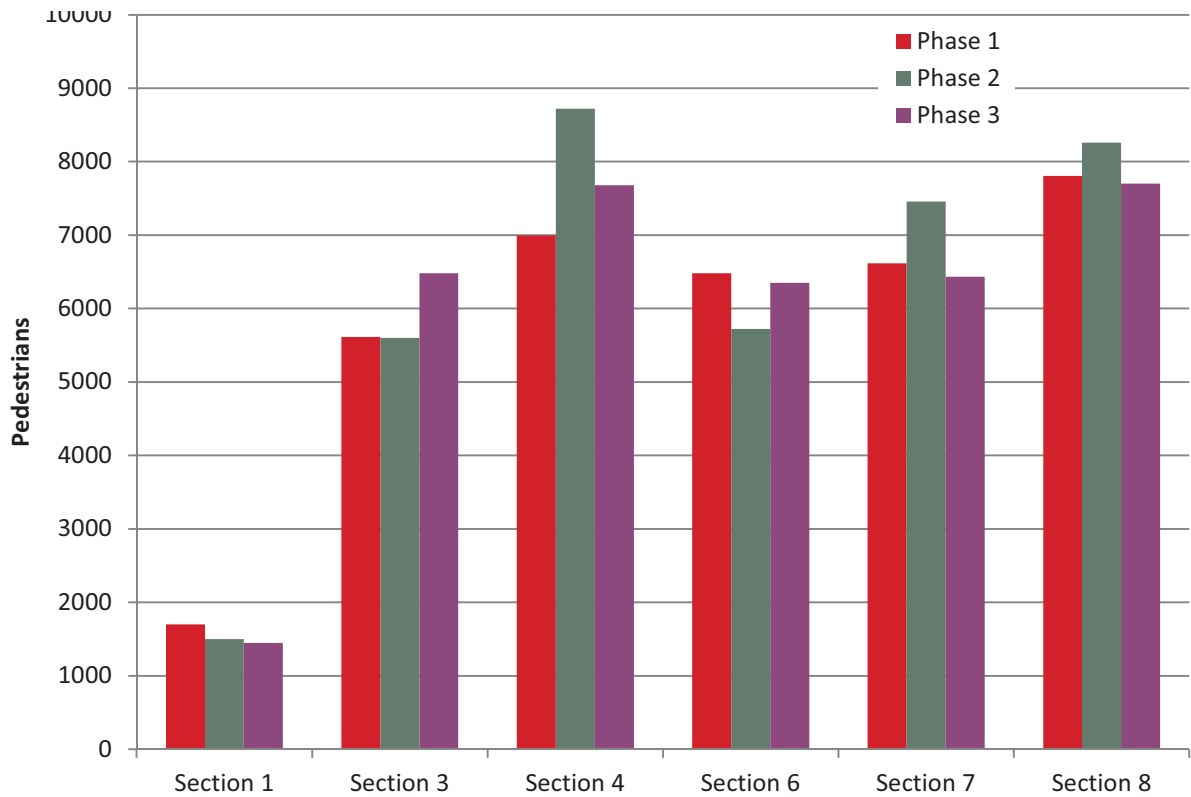
TIME	SECTION 1			SECTION 3			SECTION 4			SECTION 6			SECTION 7			SECTION 8		
	P1	P2	P3	P1	P2	P3	P1	P2	P3	P1	P2	P3	P1	P2	P3	P1	P2	P3
03:00-04:00	2	6	1	4	2	3	8	10	10	29	4	3	5	11	1	12	16	6
00:00-08:00	1-80			4-217	Y	Y	4-465			8-409	Y	Y	5-509		Y	12-678		Y
08:00-09:00*	304	394	478	894	1267	1459	1358	1626	1913	1205	1415	1672	1316	1443	1724	1635	1847	2047
08:00-10:00	304-388	Y	Y	894-1438		Y	1358-1441	Y	Y	1205-1573		Y	1316-1595		Y	1635-1866		Y
12:00-13:00	407	492	516	1419	1603	1346	2053	2320	2083	1808	1470	1659	1792	1975	1588	2101	2031	1787
10:00-16:00	385-610			1045-1693			1483-2573			1170-2201			1094-2184			1304-2338		
17:00-18:00	829	483	390	1993	2063	2671	2764	3894	3090	2669	2147	2376	2742	3189	2514	3116	3220	2973
16:00-19:00	567-829	Y	Y	1536-1993	Y	Y	2211-2764	Y	Y	159-2669			1889-2742	Y		2346-3116	Y	
21:00-22:00	160	126	62	1303	666	1004	810	870	583	768	685	638	761	840	608	940	1146	889
21:00-00:00	32-160			153-1303			286-844	Y		301-853	Y		328-880			409-978	Y	
TOTAL	1702	1501	1447	5613	5601	6483	6993	8720	7679	6479	5721	6348	6616	7458	6435	7804	8260	7702

Y Phase 2/3 result is outside range of results for P1 for corresponding time period.

Numbers have decreased across three phases. Numbers have increased across three phases.

3.2.2 **Figure 3.2** shows a comparison of total pedestrian counts over the whole day for each of the phases.

Figure 3.2 Pedestrian Counts



3.2.3 **Table 3.2** and **Figure 3.2** show that:

- There is little variation in total pedestrian flow across the day in each of the three phases. The greatest difference between Phase 3 and any other phase is less than 15% of the pedestrian count for the day.
- The period 08:00-09:00 shows consistent increases across the three phases with noticeably higher results in Phase 3.
- Thirteen Phase 3 results are outside the range of Phase 1 results for the corresponding time period.
- There is no clear pattern across the three recording phases.

4. VEHICLE FLOW AND SPEED

4.1 Vehicle Flow

4.1.1 **Table 4.1** shows a comparison of vehicle flows across the three phases. It also shows the range of results recorded across the day in Phase 1.

Table 4.1 Vehicle Flow

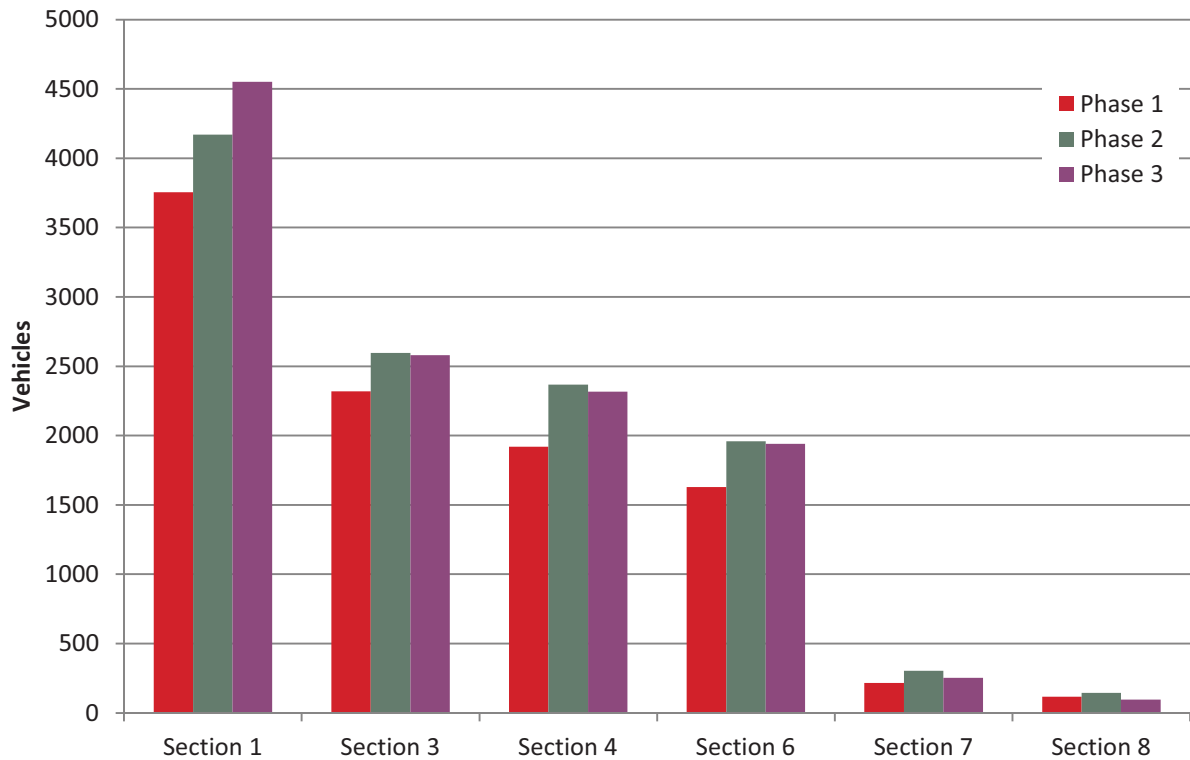
TIME	SECTION 1			SECTION 3			SECTION 4			SECTION 6			SECTION 7			SECTION 8		
	P1	P2	P3	P1	P2	P3	P1	P2	P3	P1	P2	P3	P1	P2	P3	P1	P2	P3
03:00-04:00	6	13	8	9	8	10	8	8	8	4	5	6	4	3	2	3	1	0
00:00-08:00	6-690			9-408	Y		8-333			4-269			3-47		Y	0-25		
08:00-09:00	1138	1311	1342	693	769	749	538	697	699	458	609	602	70	91	69	10	45	38
08:00-10:00	1032-1138	Y	Y	597-693	Y	Y	494-538	Y	Y	431-458	Y	Y	58-70	Y		10-27	Y	Y
12:00-13:00	965	1030	1223	625	653	665	531	615	584	446	508	482	76	81	80	42	33	13
10:00-16:00	940-1014	Y	Y	532-625	Y	Y	469-531	Y	Y	372-446	Y	Y	47-76	Y	Y	19-42		Y
17:00-18:00	1154	1260	1357	719	845	808	577	735	684	497	593	570	53	86	63	41	35	21
16:00-19:00	1035-1154	Y	Y	639-719	Y	Y	541-603	Y	Y	455-504	Y	Y	53-73	Y		21-45	Y	
21:00-22:00	492	556	621	273	322	349	266	312	342	224	243	280	14	44	39	20	30	25
21:00-00:00	236-492	Y	Y	152-322		Y	147-290	Y	Y	121-226	Y	Y	14-46			14-25		
TOTAL	3755	4170	4551	2319	2597	2581	1920	2367	2317	1629	1958	1940	217	305	253	116	144	97

Y Phase 2/3 result is outside range of results for P1 for corresponding time period.

■ Numbers have decreased across three phases. ■ Numbers have increased across three phases.

4.1.2 **Figure 4.1** shows a comparison of the total vehicle flows across the three phases.

Figure 4.1 Total Vehicle Flows



4.1.3 **Table 4.1** and **Figure 4.1** show that:

- Phase 3 vehicles flows are generally similar to those recorded in Phase 2. These are slightly higher than the results logged in Phase 1. The majority of Phase 3 results fall outside the corresponding range from Phase 1.
- Section 1 shows an increase in vehicle flows phase on phase, a pattern that occurs in four out of the five individual hours for which results were recorded as well as in the total flow for the day.

4.2 Vehicle Speed

4.2.1 **Table 4.2** shows the average two-way 85th percentile speeds for each hour in Phase 1, Phase 2 and Phase 3.

4.2.2 The speed limit for Sections 1, 3 and 4 is 20mph and 30mph for Sections 6, 7 and 8.

Table 4.2 85th Percentile Vehicle Speeds

Time	85th Percentile Speed (mph)														
	Section 1			Section 3			Section 4			Section 6			Section 7		
	P1	P2	P3	P1	P2	P3	P1	P2	P3	P1	P2	P3	P1	P2	P3
00:00:00	28.4	28.4	31.1	29.2	28.5	28.7	25.5	24.6	31.8		18.8	18.2	16.6		
01:00:00	28.9	29.9	26.0	26.6	27.8	29.9	26.2	23.1			13.5				
02:00:00	30.8	30.3													
03:00:00	28.1	30.1													
04:00:00		29.5	27.7		29.3	27.4			27.7						
05:00:00	29.6	29.7	30.7	31.8	30.3	32.7	27.6	28.3	32.1		23.3	19.8	18.8	17.6	13.0
06:00:00	30.1	29.8	29.8	29.7	31.5	31.7	27.9	27.8	31.8		20.0	18.9	19.8	18.8	14.9
07:00:00	30.1	28.8	27.8	29.3	29.6	28.6	26.8	26.4	27.1		19.3	17.7	18.4	20.1	14.1
08:00:00	28.0	25.2	25.5	25.5	26.3	26.3	24.5	23.4	26.4		17.8	16.8	19.0	18.1	15.9
09:00:00	26.2	25.4	23.8	24.3	24.7	23.1	22.6	23.0	24.8		17.8	17.4	17.7	17.8	15.6
10:00:00	26.0	26.3	24.4	23.4	24.2	24.1	21.4	22.2	24.6		17.2	17.0	19.0	18.9	15.4
11:00:00	25.8	26.3	23.1	22.6	23.8	23.9	19.4	20.4	24.0		16.4	17.2	19.9	17.5	15.4
12:00:00	25.9	24.6	23.7	23.6	23.6	24.6	20.3	17.9	22.7		14.1	17.0	19.6	16.6	15.3
13:00:00	25.4	25.6	23.6	22.7	23.3	22.6	17.3	19.2	23.6		15.6	16.7	19.2	14.7	14.3
14:00:00	25.8	25.2	24.3	23.3	24.4	23.3	19.5	19.8	24.7		15.2	16.6	17.7	15.8	12.8
15:00:00	25.9	25.4	24.5	22.0	22.5	24.2	19.8	17.2	23.6		13.8	16.6	16.7	15.4	14.7
16:00:00	25.5	24.8	23.0	23.6	22.9	23.4	19.2	17.1	25.0		13.8	15.5	19.0	17.5	15.8
17:00:00	24.9	24.9	24.2	23.4	23.8	23.4	20.6	18.5	24.1		14.7	14.8	17.2	15.3	12.7
18:00:00	25.1	24.9	25.2	25.1	24.0	24.7	22.0	18.8	25.0		14.5	16.8	16.6	17.5	15.7
19:00:00	26.0	25.7	25.4	24.6	26.6	25.8	20.7	22.6	26.0		17.4	16.7	18.9	16.3	16.7
20:00:00	26.4	27.0	25.8	26.2	28.1	26.1	21.7	23.9	28.0		18.2	17.5	18.5	17.5	16.2
21:00:00	27.5	27.0	25.7	27.8	28.6	26.8	23.8	23.5	27.6		18.0	17.8	18.3	21.8	13.8
22:00:00	27.9	28.1	26.5	27.0	27.9	28.8	22.8	22.9	27.7		17.7	17.6	18.9	16.0	15.7
23:00:00	27.5	28.3	28.0	29.6	29.4	29.4	24.3	26.0	28.9		19.7	18.4	18.7	19.1	17.1
Average	26.2	25.9	25.1	24.9	25.3	25.1	21.9	22.1	25.5		17.1	17.1	18.7	17.7	15.3

Numbers have decreased across three phases. Numbers have increased across three phases.

- Note:
- Blank cells denote insufficient vehicle flow for average speed to be established.
 - Congestion in Section 6 meant vehicles did not move fast enough to allow the radar detector to calculate speed in a robust manner during Phase 1. The readings produced spurious results and were therefore discounted. However the radar did succeed in calculating sufficiently reliable results in Phase 2 and Phase 3. These are southbound only as this section is one-way.
 - A problem with the radar detector meant that results were not recorded on 13th November 2012 for Section 1, northbound. The northbound data for this section is from an additional survey on 7th December 2012.

4.2.3 **Table 4.2** shows that:

- Speeds in Sections 3 and 6 have hardly changed across the two/three phases.
- Speeds in Section 1 have generally decreased across the three phases. Across the course of the day this amounts to an average 1.1mph reduction in speed from Phase 1 to Phase 3.
- 85th percentile speeds in Section 4 have increased across the three phases. This is a more significant change, 3.6mph on average across the whole day from Phase 1 to Phase 3.
- Section 7 also exhibits a more pronounced change, in this case a decrease in average 85th percentile speed of 3.4mph from Phase 1 to Phase 3.

5. STOPPING ABRUPTLY AND ACCIDENTS

5.1 Stopping Abruptly

5.1.1 There were no incidents of stopping abruptly recorded across Phase 3. This compares to two incidents recorded in Phase 2.

5.1.2 In the equivalent hours in Phase 1, there was only one incident of stopping abruptly recorded. In the same sections, across the course of the whole day in Phase 1 there were 13 such incidents.

5.2 Accidents

5.2.1 No accidents were recorded in any of Phases 1, 2 or 3.

6. PARKING OCCUPANCY AND VEHICLES STOPPING

6.1 Parking Occupancy

6.1.1 **Table 6.1** shows the level of occupancy of designated parking spaces across the survey period for each Section. The number of spaces within each Section is shown in **Table 6.2**.

Table 6.1 Parking Space Occupancy

	% Occupancy Diplomatic Bays			% Occupancy Disabled Bays			% Occupancy Residential Bays		
	Phase 1	Phase 2	Phase 3	Phase 1	Phase 2	Phase 3	Phase 1	Phase 2	Phase 3
Section 1	67%	53%	67%				21%	15%	28%
Section 3							15%	18%	20%
Section 4				0%	0%	17%	72%	76%	68%
Section 6	20%	60%	20%						
Section 7	No designated bays								
Section 8	No designated bays								

Table 6.2 Parking Spaces

	Number of bays		
	Diplomatic	Disabled	Residential
Section 1	3		37
Section 3			52
Section 4		12	19
Section 6	2		
Section 7			
Section 8			

6.1.2 An average daily occupancy was calculated based on counts taken at 5 minute intervals and totalled across each hour. In calculating the occupancy, the 3 diplomatic bays, for example, would, for Phase 3, have a daily total available space of $3 \times 5 = 15$ spaces so a daily total of 10 would be a 67% occupancy.

6.1.3 **Table 6.1** shows that:

- Levels of occupancy of residential bays have not changed much across the three phases.
- Phase 3 and Phase 1 occupancy levels of diplomatic bays were the same, with Phase 2 results slightly higher.
- Phase 3 shows some use of the disabled bays, which was not the case in either Phase 2 or Phase 1.

7. SAFE ZONE AND WRONG WAY MOVEMENTS

7.1 Safe Zone Movements

7.1.1 **Table 7.1** shows incidents of vehicles entering the safe zones in each section for the three phases. It also indicates whether Phase 2 and 3 results fall within the range of results for the equivalent time period in Phase 1.

Table 7.1 Safe Zone Movements

TIME	SECTION 1			SECTION 3			SECTION 4			SECTION 6			SECTION 7		
	P1	P2	P3	P1	P2	P3	P1	P2	P3	P1	P2	P3	P1	P2	P3
03:00-04:00	1	0	1	3	2	1	0	0	0	0	0	0	0	0	3
00:00-08:00	0-13			0-14			0-15			0-4			0-11		
08:00-09:00	10	26	15	6	25	15	13	10	15	2	6	2	3	18	11
08:00-10:00	5-10	Y	Y	6-11	Y	Y	3-13		Y	1-2	Y		3-7	Y	Y
12:00-13:00	17	4	27	9	21	21	6	8	22	4	3	1	11	12	7
10:00-16:00	4-17		Y	9-17	Y	Y	4-17		Y	3-6		Y	4-11	Y	
17:00-18:00	8	4	10	17	18	16	7	20	22	8	3	3	12	12	8
16:00-19:00	4-23			10-17	Y		2-7	Y	Y	5-8	Y	Y	2-12		
21:00-22:00	3	4	12	4	13	11	5	10	15	4	1	4	7	11	8
21:00-00:00	1-3	Y	Y	1-4	Y	Y	4-6	Y	Y	1-4			4-7	Y	Y
TOTAL	39	38	65	39	79	64	31	48	74	18	13	10	33	53	37

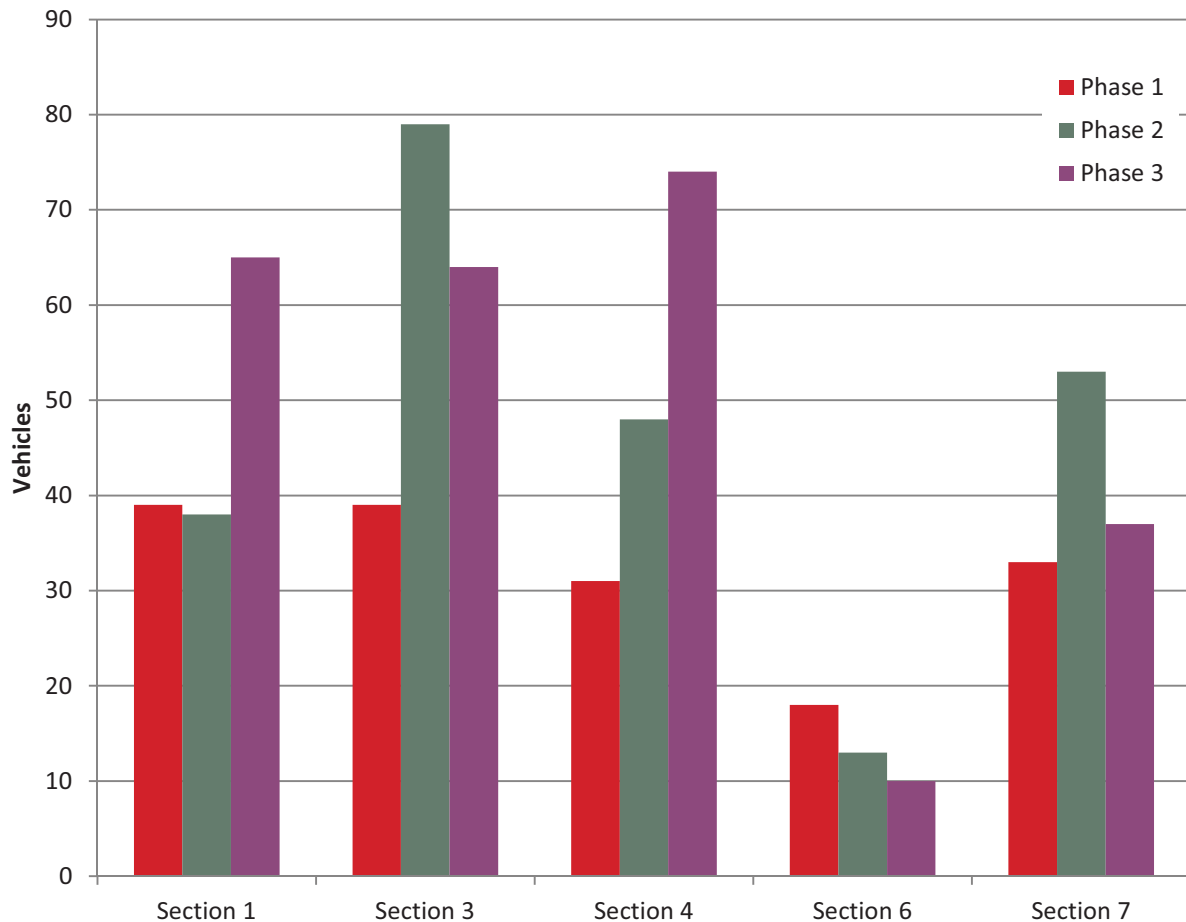
Y Phase 2/3 result is outside range of results for P1 for corresponding time period.

Numbers have decreased across three phases.

Numbers have increased across three phases.

7.1.2 **Figure 7.1** shows a comparison of the total number of incidents of vehicles entering the safe zones in each of the three phases.

Figure 7.1 Safe Zone Movements



7.1.3 **Table 7.1** and **Figure 7.1** show that:

- With the exception of Section 6 the number of vehicles entering the safe zones in Phase 3 has increased compared to Phase 1. Section 1 and Section 4 results are also higher in Phase 3 than they were in Phase 2.
- Fourteen of the Phase 3 results fall outside of the Phase 1 ranges, the majority of these are greater than the Phase 1 results.

7.1.4 Video survey observations show that pedal cycles make up most of the safe zone movements in Section 4, travelling southbound down the inside of the queue of traffic that builds up at the junction with Cromwell Road.

7.1.5 From video survey observations, the higher number of recorded vehicles entering the safe zones in Section 1 is explained through a combination of cyclists cutting across the safe zone in order to turn left into Kensington Road at the northern end of Exhibition Road and motor vehicles dropping off or turning round in this section and using the safe zones to perform these manoeuvres.

7.2 Wrong Way Movements

7.2.1 **Table 7.2** shows incidents of vehicles travelling the wrong way in each section for the three phases. It also indicates whether Phase 2 and 3 results fall within the range of results for the equivalent time period in Phase 1.

Table 7.2 Wrong Way Movements

TIME	SECTION 1			SECTION 3			SECTION 4			SECTION 6			SECTION 7		
	P1	P2	P3	P1	P2	P3	P1	P2	P3	P1	P2	P3	P1	P2	P3
03:00-04:00	0	1	0	0	1	4	0	0	0	0	0	0	0	0	0
00:00-08:00	0-3			0-7			0-13			0-4			0-1		
08:00-09:00	0	3	2	4	13	14	16	10	19	8	9	15	5	7	20
08:00-10:00	0	Y	Y	4-6	Y	Y	8-16		Y	3-8	Y	Y	4-5	Y	Y
12:00-13:00	1	0	1	4	8	20	13	22	15	3	5	5	4	10	11
10:00-16:00	0-1			3-9		Y	2-18	Y		2-6			1-7	Y	Y
17:00-18:00	1	1	1	4	11	8	6	23	23	2	1	2	9	9	21
16:00-19:00	0-1			3-11			6-11	Y	Y	1-8			3-9		Y
21:00-22:00	1	2	0	3	12	10	5	10	7	4	6	5	5	9	13
21:00-00:00	0-1	Y		3-5	Y	Y	5-14			0-4	Y	Y	1-5	Y	Y
TOTAL	3	7	4	15	45	56	40	65	64	17	21	27	23	35	65

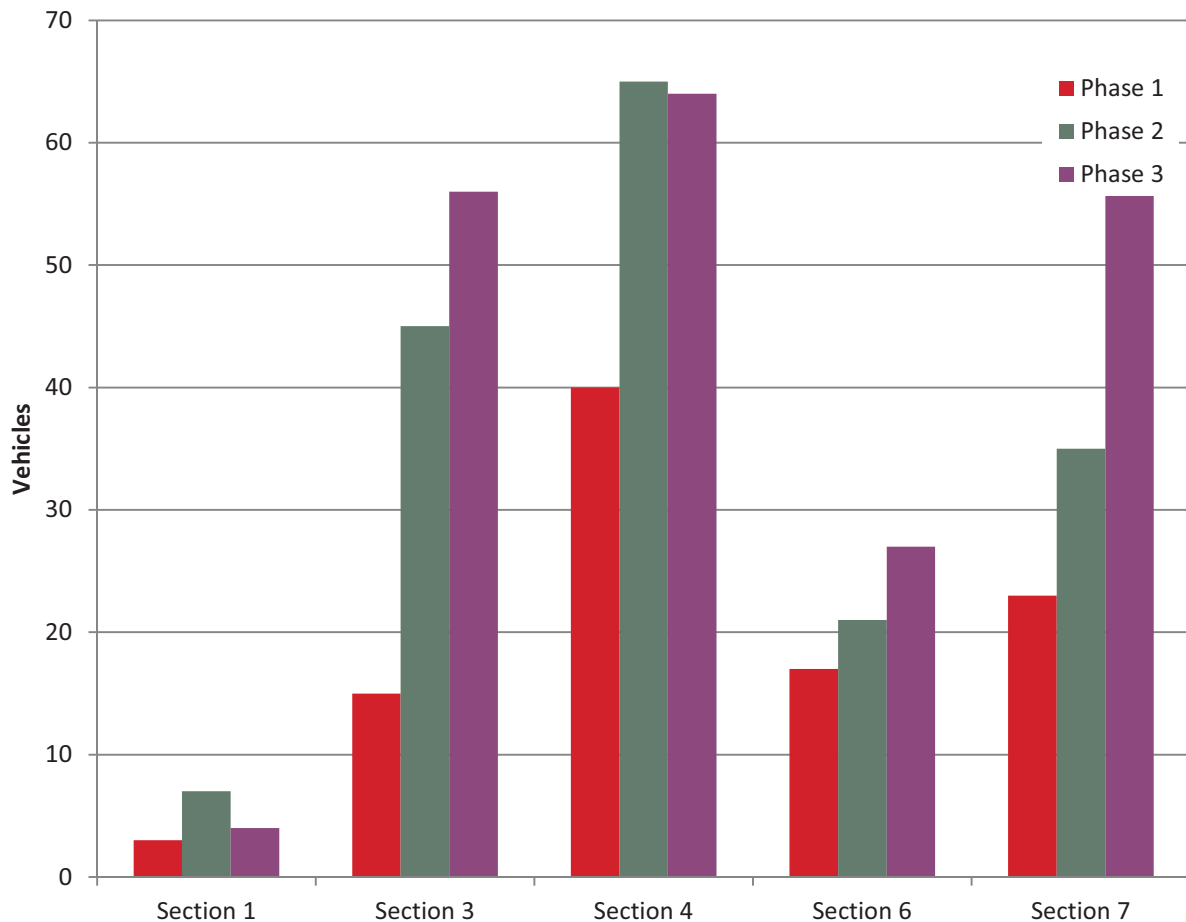
Y Phase 2/3 result is outside range of results for P1 for corresponding time period.

Numbers have decreased across three phases.

Numbers have increased across three phases.

7.2.2 **Figure 7.2** shows a comparison of the total number of incidents of vehicles travelling the wrong way in each of the three phases.

Figure 7.2 Wrong Way Movements



7.2.3 **Table 7.2** and **Figure 7.2** show that:

- The number of incidents of vehicles travelling the wrong way is similar to those recorded in the previous phases in Sections 1 and 6. Sections 3 and 7 show more noticeable increases between Phase 1 and Phase 3 in the number of vehicles recorded travelling the wrong way.
- Section 3, 6 and 7 also show a pattern of the number of incidents increasing with each phase.
- Twelve of the Phase 3 results fall outside the range of Phase 1 results.

7.2.4 From video survey observations the majority of the increases in wrong way movements in section 3 can be explained by pedal cyclists travelling northbound in the transition zones. The wrong way movements in Section 7 are mostly made up of pedal cyclists travelling northbound despite Section 7 being one-way southbound. The southern end of Section 7 also sees some drivers reversing back into the road having attempted to turn right into Thurloe Street, which is not a through route.

8. BUS STOP BEHAVIOUR

8.1 Bus Stop Behaviour

8.1.1 **Table 8.1** shows the number of passengers that boarded and alighted buses within the survey area and the number of these passengers that tripped.

Table 8.1 Bus Stop Behaviour

		Phase 1		Phase 2		Phase 3	
		Daylight	Darkness	Daylight	Darkness	Daylight	Darkness
Bus stop K (northbound)	Boarders/alighters	3	3	8	1	11	1
	Tripping	0	0	0	0	0	0
Bus stop L (southbound)	Boarders/alighters	28	0	8	9	25	1
	Tripping	1	0	0	0	0	0

Busiest hours:

Phase 1: 5pm-6pm (daylight), 10pm-11pm (darkness)

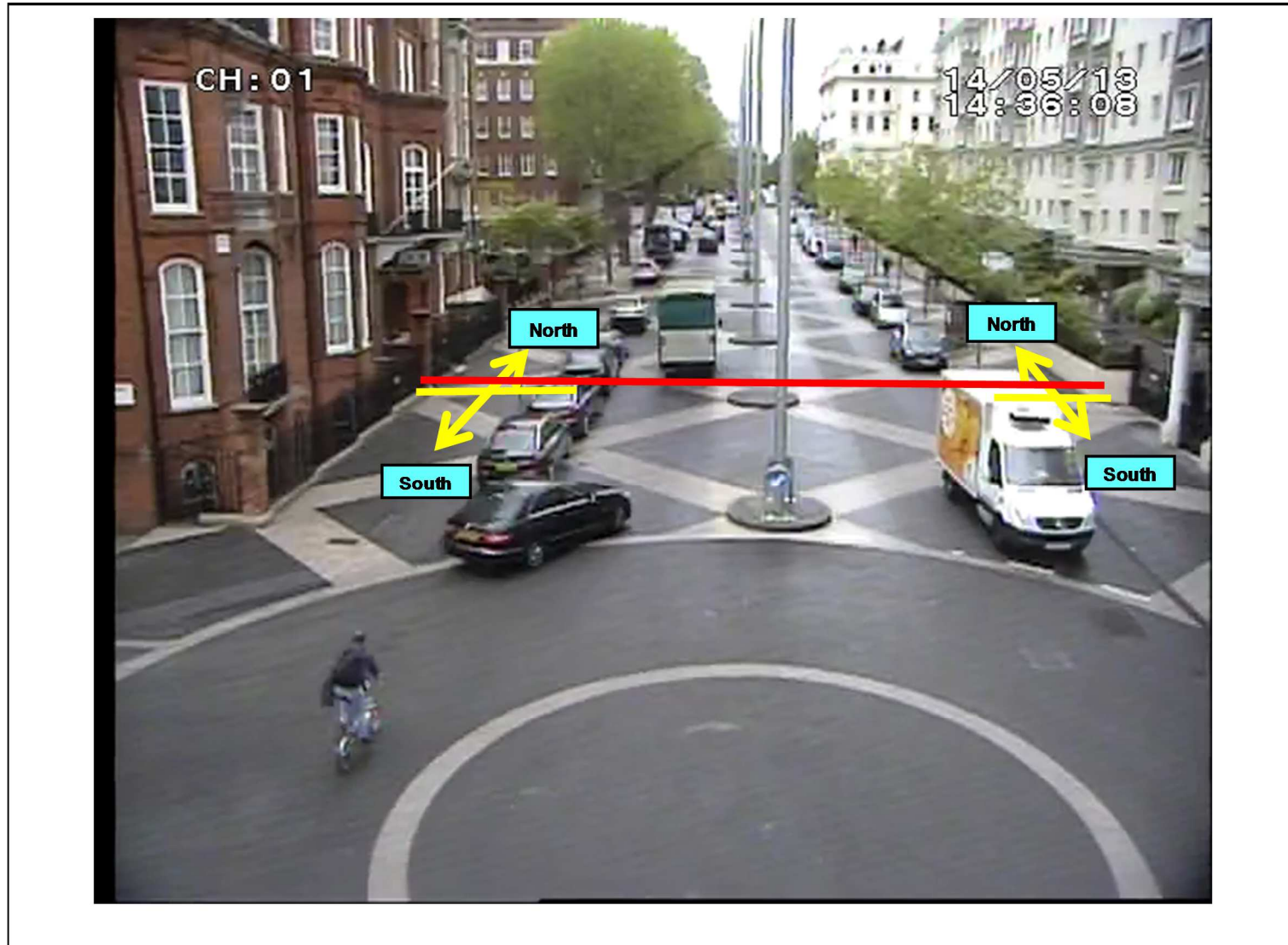
Phase 2: 12pm-1pm (daylight), 5pm-6pm (darkness)

8.1.2 **Table 8.1** shows that few passengers boarded or alighted buses in Phase 3 and that none of these passengers tripped.

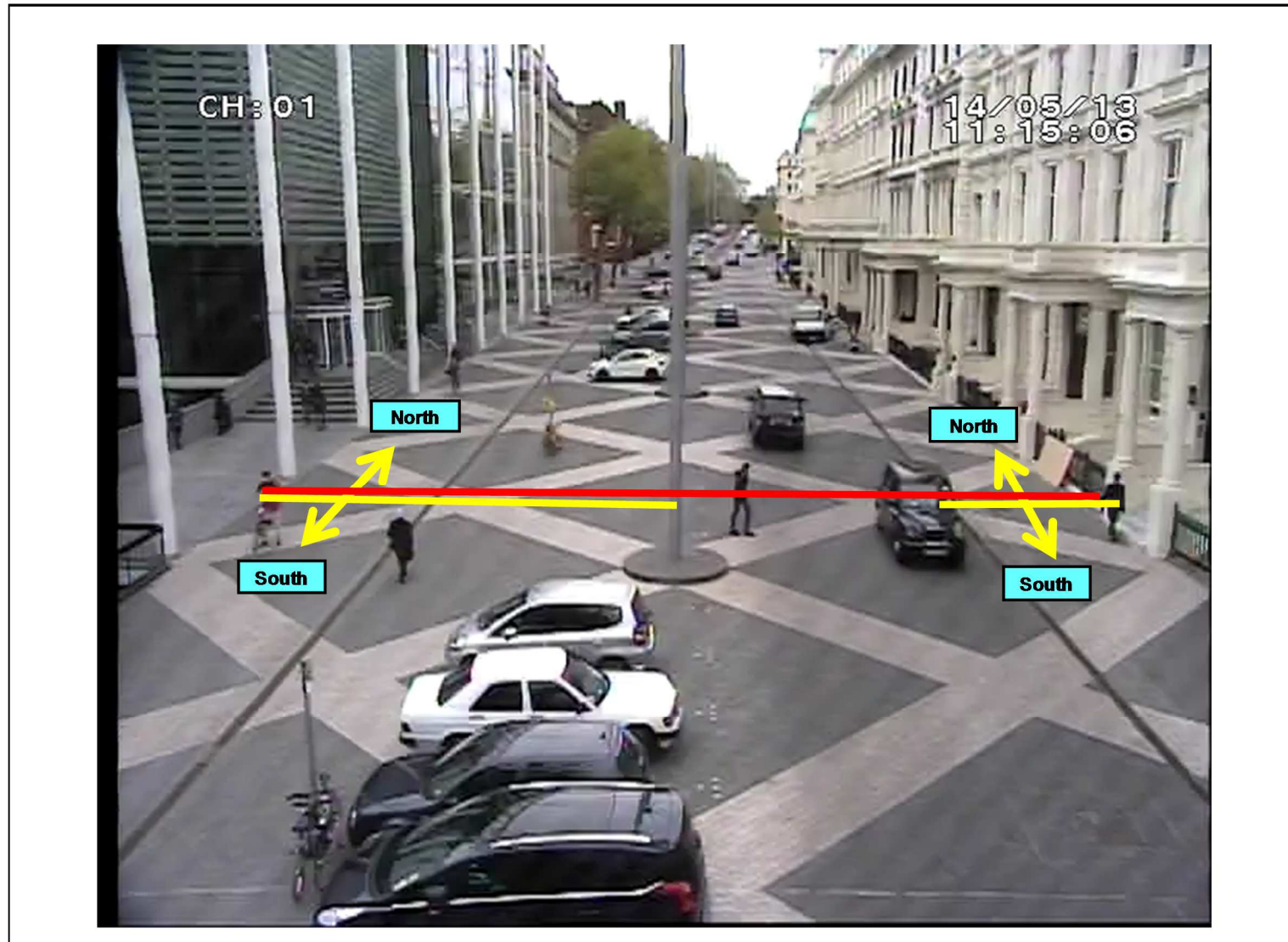
8.1.3 The Phase 3 results are similar to those recorded in the previous two phases.

Appendix A – Screenline Locations

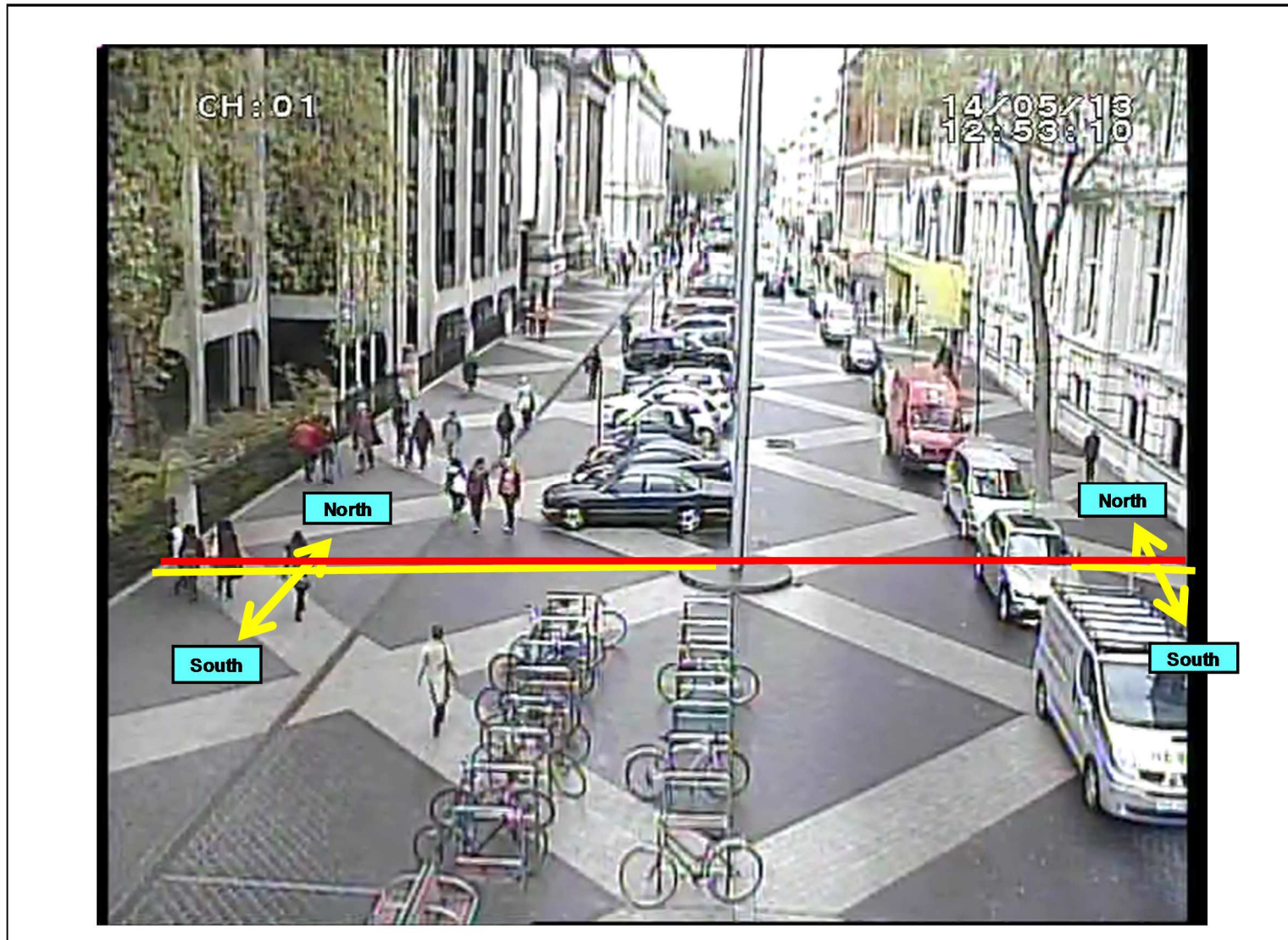
Section: 1
View: J



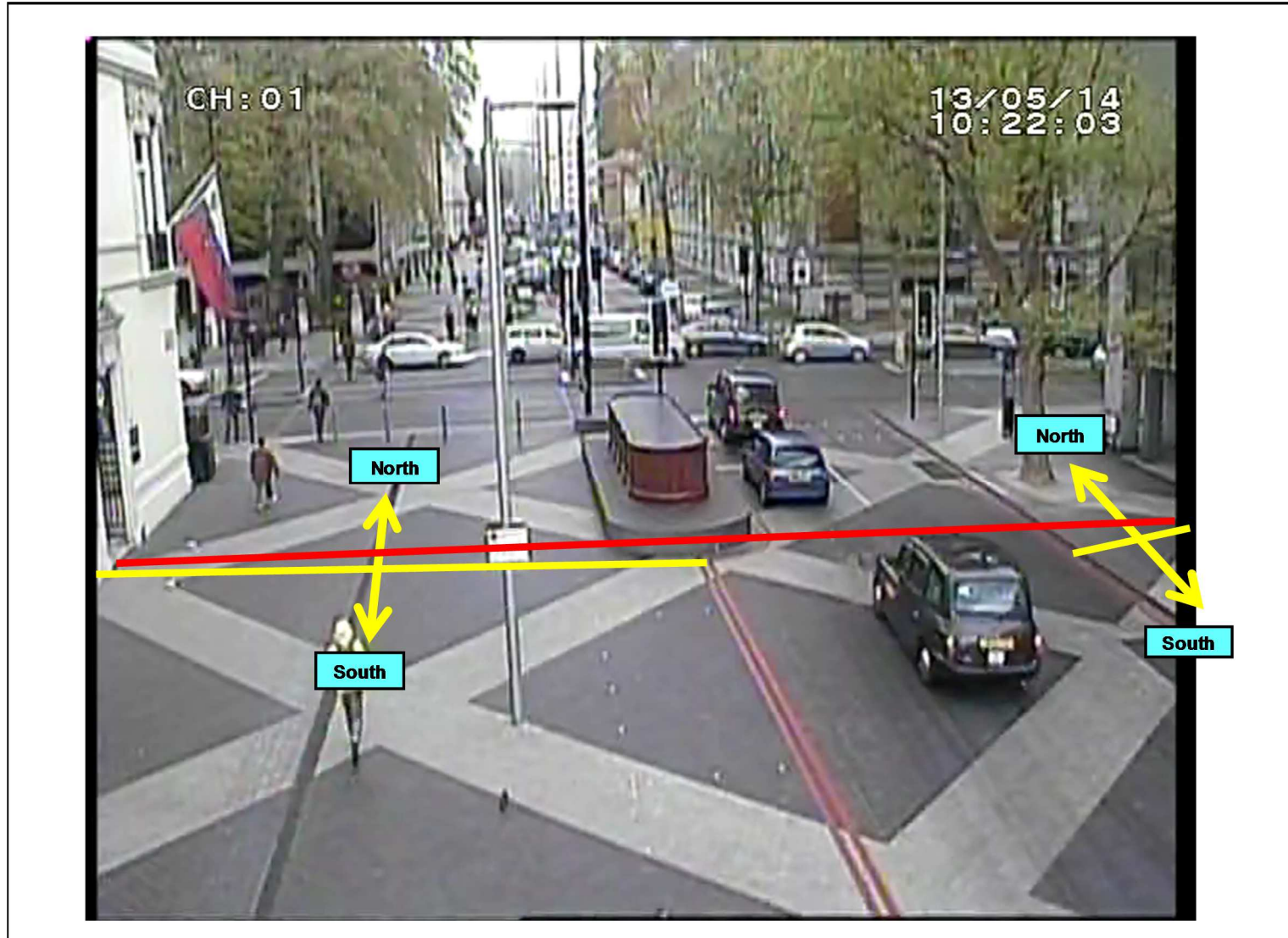
Section: 3
View: H



Section: 4
View: D



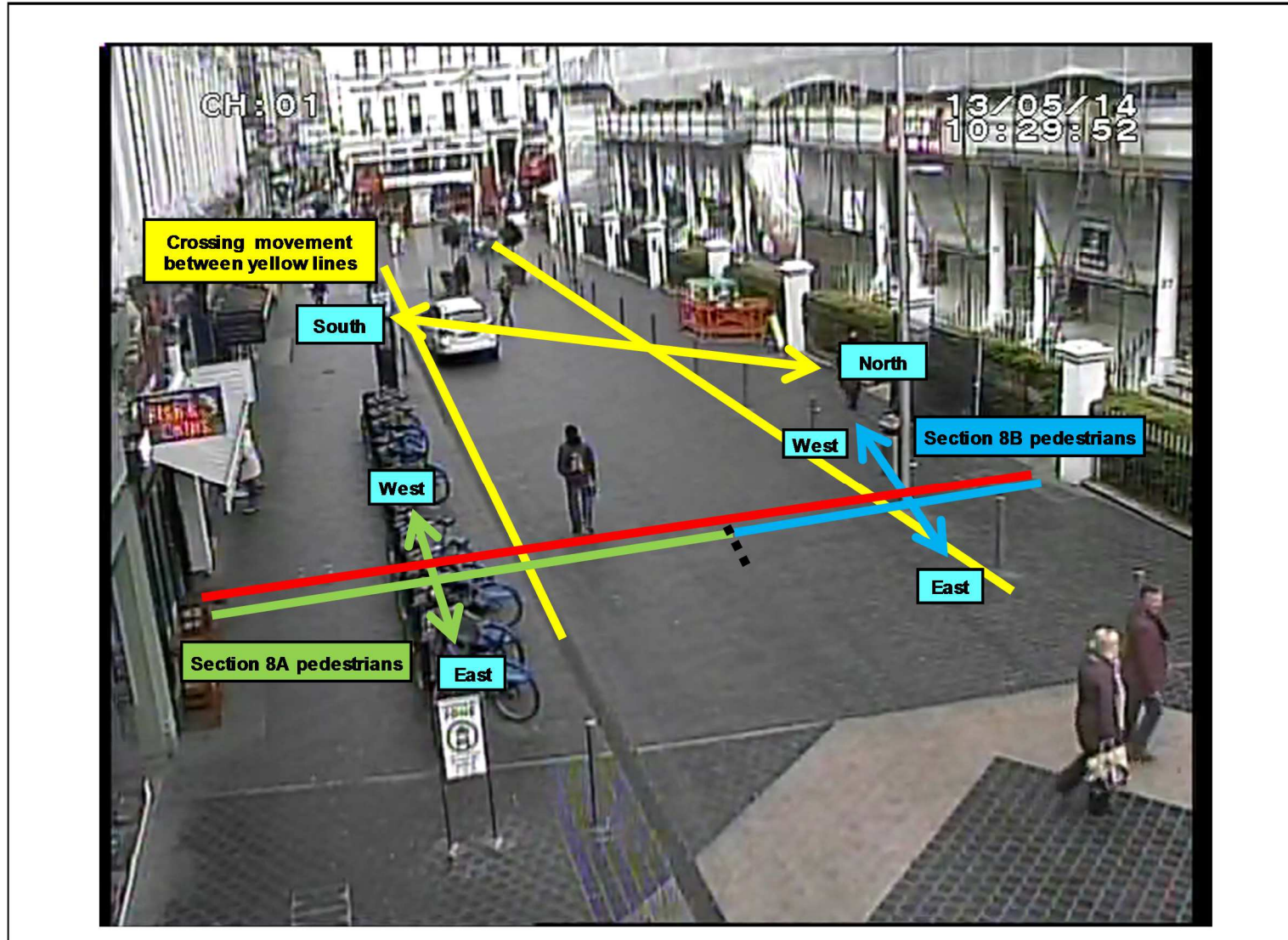
Section: 6
View: C



Section: 7
View: B



Section: 8
View: 2



Appendix B – Pedestrian Crossing Movements

Phase 1

SECTION 1	EAST to WEST							WEST to EAST						
TIME	People With Prams/ Pushchairs	Wheelchair/ Electric Scooter Users	Severe Mobility Difficulties	Visually Impaired	Able Bodied Adults	Able Bodied Children	TOT	People With Prams/ Pushchairs	Wheelchair/ Electric Scooter Users	Severe Mobility Difficulties	Visually Impaired	Able Bodied Adults	Able Bodied Children	TOT
03:00-04:00	0	0	0	0	0	0	0	0	0	0	0	0	0	0
08:00-09:00	1	0	0	0	35	0	36	4	0	0	0	38	3	45
12:00-13:00	2	0	0	0	38	0	40	2	0	0	0	35	0	37
17:00-18:00	1	0	0	0	23	1	25	1	0	0	0	54	0	55
21:00-22:00	0	0	0	0	4	0	4	0	0	0	0	19	0	19
TOTAL	4	0	0	0	100	1	105	7	0	0	0	146	3	156

Phase 2

SECTION 1	EAST to WEST							WEST to EAST						
TIME	People With Prams/ Pushchairs	Wheelchair/ Electric Scooter Users	Severe Mobility Difficulties	Visually Impaired	Able Bodied Adults	Able Bodied Children	TOT	People With Prams/ Pushchairs	Wheelchair/ Electric Scooter Users	Severe Mobility Difficulties	Visually Impaired	Able Bodied Adults	Able Bodied Children	TOT
03:00-04:00	0	0	0	0	0	0	0	0	0	0	0	1	0	1
08:00-09:00	2	0	0	0	64	11	77	4	1	0	0	76	26	107
12:00-13:00	0	0	0	0	80	0	80	1	0	0	0	108	0	109
17:00-18:00	1	0	0	0	62	1	64	2	0	0	0	126	5	133
21:00-22:00	0	0	0	0	34	0	34	0	0	0	0	30	0	30
TOTAL	3	0	0	0	240	12	255	7	1	0	0	341	31	380

Phase 3

SECTION 1	EAST to WEST							WEST to EAST						
TIME	People With Prams/ Pushchairs	Wheelchair/ Electric Scooter Users	Severe Mobility Difficulties	Visually Impaired	Able Bodied Adults	Able Bodied Children	TOT	People With Prams/ Pushchairs	Wheelchair/ Electric Scooter Users	Severe Mobility Difficulties	Visually Impaired	Able Bodied Adults	Able Bodied Children	TOT
03:00-04:00	0	0	0	0	0	0	0	0	0	0	0	0	0	0
08:00-09:00	1	0	0	0	82	2	85	1	0	0	0	91	24	116
12:00-13:00	3	0	0	0	42	0	45	1	0	0	0	87	0	88
17:00-18:00	3	0	0	0	48	3	54	0	0	0	0	88	2	90
21:00-22:00	0	0	0	0	8	0	8	0	0	0	0	9	0	9
TOTAL	7	0	0	0	180	5	192	2	0	0	0	275	26	303

Phase 1

SECTION 3	EAST to WEST							WEST to EAST							TOT
	People With Prams/ Pushchairs	Wheelchair/ Electric Scooter Users	Severe Mobility Difficulties	Visually Impaired	Able Bodied Adults	Able Bodied Children	TOT	People With Prams/ Pushchairs	Wheelchair/ Electric Scooter Users	Severe Mobility Difficulties	Visually Impaired	Able Bodied Adults	Able Bodied Children	TOT	
TIME															
03:00-04:00	0	0	0	0	1	0	1	0	0	0	0	7	0	7	
08:00-09:00	1	0	0	0	273	16	290	5	1	0	0	111	7	124	
12:00-13:00	2	0	0	0	181	0	183	0	0	0	0	430	21	451	
17:00-18:00	3	0	0	0	258	15	276	6	0	0	0	300	7	313	
21:00-22:00	0	0	0	0	138	0	138	0	0	0	0	160	0	160	
TOTAL	6	0	0	0	851	31	888	11	1	0	0	1008	35	1055	

Phase 2

SECTION 3	EAST to WEST							WEST to EAST							TOT
	People With Prams/ Pushchairs	Wheelchair/ Electric Scooter Users	Severe Mobility Difficulties	Visually Impaired	Able Bodied Adults	Able Bodied Children	TOT	People With Prams/ Pushchairs	Wheelchair/ Electric Scooter Users	Severe Mobility Difficulties	Visually Impaired	Able Bodied Adults	Able Bodied Children	TOT	
TIME															
03:00-04:00	0	0	0	0	2	0	2	0	0	0	0	1	0	1	
08:00-09:00	5	0	0	0	533	10	548	9	0	0	0	162	5	176	
12:00-13:00	2	0	0	0	310	2	314	1	0	0	0	550	4	555	
17:00-18:00	7	0	0	0	340	2	349	5	1	0	0	531	4	541	
21:00-22:00	0	0	0	0	171	0	171	0	0	0	0	84	0	84	
TOTAL	14	0	0	0	1356	14	1384	15	1	0	0	1328	13	1357	

Phase 3

SECTION 3	EAST to WEST							WEST to EAST							TOT
	People With Prams/ Pushchairs	Wheelchair/ Electric Scooter Users	Severe Mobility Difficulties	Visually Impaired	Able Bodied Adults	Able Bodied Children	TOT	People With Prams/ Pushchairs	Wheelchair/ Electric Scooter Users	Severe Mobility Difficulties	Visually Impaired	Able Bodied Adults	Able Bodied Children	TOT	
TIME															
03:00-04:00	0	0	0	0	1	0	1	0	0	0	0	9	0	9	
08:00-09:00	4	0	0	0	348	8	360	8	0	0	0	184	9	201	
12:00-13:00	4	0	0	0	320	2	326	6	0	0	0	424	6	436	
17:00-18:00	12	0	0	0	551	3	566	6	0	0	0	533	5	544	
21:00-22:00	0	0	0	0	168	1	169	1	0	0	0	105	2	108	
TOTAL	20	0	0	0	1388	14	1422	21	0	0	0	1255	22	1298	

Phase 1

SECTION 4	EAST to WEST							TOT	WEST to EAST							TOT
	People With Prams/ Pushchairs	Wheelchair/ Electric Scooter Users	Severe Mobility Difficulties	Visually Impaired	Able Bodied Adults	Able Bodied Children	People With Prams/ Pushchairs		Wheelchair/ Electric Scooter Users	Severe Mobility Difficulties	Visually Impaired	Able Bodied Adults	Able Bodied Children			
TIME																
03:00-04:00	0	0	0	0	0	0	0	0	0	0	0	0	0	0		
08:00-09:00	0	0	0	0	69	0	69	4	0	0	0	114	1	119		
12:00-13:00	3	0	0	0	244	10	257	3	1	0	0	339	9	352		
17:00-18:00	4	1	0	0	220	2	227	1	0	0	0	217	6	224		
21:00-22:00	0	0	0	0	34	0	34	0	0	0	0	48	0	48		
TOTAL	7	1	0	0	567	12	587	8	1	0	0	718	16	743		

Phase 2

SECTION 4	EAST to WEST							TOT	WEST to EAST							TOT
	People With Prams/ Pushchairs	Wheelchair/ Electric Scooter Users	Severe Mobility Difficulties	Visually Impaired	Able Bodied Adults	Able Bodied Children	People With Prams/ Pushchairs		Wheelchair/ Electric Scooter Users	Severe Mobility Difficulties	Visually Impaired	Able Bodied Adults	Able Bodied Children			
TIME																
03:00-04:00	0	0	0	0	0	0	0	0	0	0	0	0	0	0		
08:00-09:00	0	0	0	0	97	3	100	7	0	0	0	122	7	136		
12:00-13:00	2	0	0	0	236	4	242	3	0	1	0	336	5	345		
17:00-18:00	4	0	0	0	248	7	259	1	0	0	0	128	6	135		
21:00-22:00	0	0	0	0	48	0	48	0	0	0	0	45	0	45		
TOTAL	6	0	0	0	629	14	649	11	0	1	0	631	18	661		

Phase 3

SECTION 4	EAST to WEST							TOT	WEST to EAST							TOT
	People With Prams/ Pushchairs	Wheelchair/ Electric Scooter Users	Severe Mobility Difficulties	Visually Impaired	Able Bodied Adults	Able Bodied Children	People With Prams/ Pushchairs		Wheelchair/ Electric Scooter Users	Severe Mobility Difficulties	Visually Impaired	Able Bodied Adults	Able Bodied Children			
TIME																
03:00-04:00	0	0	0	0	0	0	0	0	0	0	0	0	0	0		
08:00-09:00	1	0	0	0	90	7	98	5	0	0	0	122	6	133		
12:00-13:00	2	0	0	0	149	4	155	6	2	0	0	207	1	216		
17:00-18:00	6	0	0	0	207	7	220	4	0	0	0	241	3	248		
21:00-22:00	0	0	0	0	52	0	52	0	0	0	0	44	0	44		
TOTAL	9	0	0	0	498	18	525	15	2	0	0	614	10	641		

Phase 1

SECTION 6		EAST to WEST							WEST to EAST						
TIME	People With Prams/ Pushchairs	Wheelchair/ Electric Scooter Users	Severe Mobility Difficulties	Visually Impaired	Able Bodied Adults	Able Bodied Children	TOT	People With Prams/ Pushchairs	Wheelchair/ Electric Scooter Users	Severe Mobility Difficulties	Visually Impaired	Able Bodied Adults	Able Bodied Children	TOT	
03:00-04:00	0	0	0	0	2	0	2	0	0	0	0	9	0	9	
08:00-09:00	0	0	0	0	33	1	34	0	0	0	0	30	3	33	
12:00-13:00	1	0	0	0	74	2	77	1	0	0	0	64	1	66	
17:00-18:00	0	0	0	0	75	4	79	1	0	0	0	58	1	60	
21:00-22:00	0	0	0	0	32	0	32	0	0	0	0	42	0	42	
TOTAL	1	0	0	0	216	7	224	2	0	0	0	203	5	210	

Phase 2

SECTION 6		EAST to WEST							WEST to EAST						
TIME	People With Prams/ Pushchairs	Wheelchair/ Electric Scooter Users	Severe Mobility Difficulties	Visually Impaired	Able Bodied Adults	Able Bodied Children	TOT	People With Prams/ Pushchairs	Wheelchair/ Electric Scooter Users	Severe Mobility Difficulties	Visually Impaired	Able Bodied Adults	Able Bodied Children	TOT	
03:00-04:00	0	0	0	0	1	0	1	0	0	0	0	1	0	1	
08:00-09:00	0	0	0	0	6	2	8	0	0	0	0	18	0	18	
12:00-13:00	0	0	0	0	41	0	41	0	0	0	0	46	0	46	
17:00-18:00	0	0	0	0	51	0	51	0	0	0	0	69	0	69	
21:00-22:00	0	0	0	0	10	0	10	0	0	0	0	23	0	23	
TOTAL	0	0	0	0	109	2	111	0	0	0	0	157	0	157	

Phase 3

SECTION 6		EAST to WEST							WEST to EAST						
TIME	People With Prams/ Pushchairs	Wheelchair/ Electric Scooter Users	Severe Mobility Difficulties	Visually Impaired	Able Bodied Adults	Able Bodied Children	TOT	People With Prams/ Pushchairs	Wheelchair/ Electric Scooter Users	Severe Mobility Difficulties	Visually Impaired	Able Bodied Adults	Able Bodied Children	TOT	
03:00-04:00	0	0	0	0	0	0	0	0	0	0	0	0	0	0	
08:00-09:00	1	0	0	0	38	1	40	1	0	0	0	75	0	76	
12:00-13:00	2	0	0	0	94	0	96	1	0	0	0	119	0	120	
17:00-18:00	0	0	0	0	159	0	159	1	0	0	0	127	1	129	
21:00-22:00	0	0	0	0	49	0	49	0	0	0	0	35	0	35	
TOTAL	3	0	0	0	340	1	344	3	0	0	0	356	1	360	

Phase 1

SECTION 7	EAST to WEST							WEST to EAST							TOT
TIME	People With Prams/ Pushchairs	Wheelchair/ Electric Scooter Users	Severe Mobility Difficulties	Visually Impaired	Able Bodied Adults	Able Bodied Children	TOT	People With Prams/ Pushchairs	Wheelchair/ Electric Scooter Users	Severe Mobility Difficulties	Visually Impaired	Able Bodied Adults	Able Bodied Children	TOT	
03:00-04:00	0	0	0	0	1	0	1	0	0	0	0	4	0	4	
08:00-09:00	0	0	0	0	50	0	50	0	0	0	0	160	1	161	
12:00-13:00	0	0	0	0	155	3	158	3	0	0	0	200	3	206	
17:00-18:00	5	0	0	0	112	3	120	0	0	0	0	97	2	99	
21:00-22:00	0	0	0	0	96	0	96	0	0	0	0	60	0	60	
TOTAL	5	0	0	0	414	6	425	3	0	0	0	521	6	530	

Phase 2

SECTION 7	EAST to WEST							WEST to EAST							TOT
TIME	People With Prams/ Pushchairs	Wheelchair/ Electric Scooter Users	Severe Mobility Difficulties	Visually Impaired	Able Bodied Adults	Able Bodied Children	TOT	People With Prams/ Pushchairs	Wheelchair/ Electric Scooter Users	Severe Mobility Difficulties	Visually Impaired	Able Bodied Adults	Able Bodied Children	TOT	
03:00-04:00	0	0	0	0	0	0	0	0	0	0	0	0	0	0	
08:00-09:00	0	0	0	0	40	3	43	1	0	0	0	189	2	192	
12:00-13:00	1	0	0	0	126	0	127	2	0	0	0	117	2	121	
17:00-18:00	1	0	0	0	143	3	147	3	0	0	0	113	1	117	
21:00-22:00	1	0	0	0	134	2	137	0	0	0	0	55	1	56	
TOTAL	3	0	0	0	443	8	454	6	0	0	0	474	6	486	

Phase 3

SECTION 7	EAST to WEST							WEST to EAST							TOT
TIME	People With Prams/ Pushchairs	Wheelchair/ Electric Scooter Users	Severe Mobility Difficulties	Visually Impaired	Able Bodied Adults	Able Bodied Children	TOT	People With Prams/ Pushchairs	Wheelchair/ Electric Scooter Users	Severe Mobility Difficulties	Visually Impaired	Able Bodied Adults	Able Bodied Children	TOT	
03:00-04:00	0	0	0	0	0	0	0	0	0	0	0	0	0	0	
08:00-09:00	1	0	0	0	39	3	43	0	0	0	0	199	1	200	
12:00-13:00	1	0	0	0	148	1	150	1	0	0	0	142	2	145	
17:00-18:00	4	0	0	0	201	7	212	0	0	0	0	197	2	199	
21:00-22:00	0	0	0	0	76	0	76	0	0	0	0	39	0	39	
TOTAL	6	0	0	0	464	11	481	1	0	0	0	577	5	583	

Phase 2

SECTION 8	SOUTH to NORTH							TOT	NORTH to SOUTH							TOT
	People With Prams/ Pushchairs	Wheelchair/ Electric Scooter Users	Severe Mobility Difficulties	Visually Impaired	Able Bodied Adults	Able Bodied Children	People With Prams/ Pushchairs		Wheelchair/ Electric Scooter Users	Severe Mobility Difficulties	Visually Impaired	Able Bodied Adults	Able Bodied Children			
TIME																
03:00-04:00	0	0	0	0	6	0	6	0	0	0	0	0	0			
08:00-09:00	0	0	0	0	110	3	113	10	0	0	950	2	962			
12:00-13:00	9	0	0	0	397	2	408	5	0	0	410	2	417			
17:00-18:00	7	0	0	0	897	5	909	3	0	0	292	3	298			
21:00-22:00	0	0	0	0	435	0	435	0	0	0	95	0	95			
TOTAL	16	0	0	0	1845	10	1871	18	0	0	1747	7	1772			

Phase 3

SECTION 8	SOUTH to NORTH							TOT	NORTH to SOUTH							TOT
	People With Prams/ Pushchairs	Wheelchair/ Electric Scooter Users	Severe Mobility Difficulties	Visually Impaired	Able Bodied Adults	Able Bodied Children	People With Prams/ Pushchairs		Wheelchair/ Electric Scooter Users	Severe Mobility Difficulties	Visually Impaired	Able Bodied Adults	Able Bodied Children			
TIME																
03:00-04:00	0	0	0	0	0	0	0	0	0	0	0	0	0			
08:00-09:00	8	0	0	0	1082	9	1099	2	0	0	180	6	188			
12:00-13:00	7	1	1	0	560	8	577	7	0	0	225	2	234			
17:00-18:00	3	0	0	0	227	5	235	6	0	0	770	6	782			
21:00-22:00	0	0	0	0	98	2	100	0	0	0	412	4	416			
TOTAL	18	1	1	0	1967	24	2011	15	0	0	1587	18	1620			

Appendix C – Screenline Pedestrian Counts

Phase 1

SECTION 1		EASTERN PAVEMENT												TOT			
TIME	NORTHBOUND							TOT	SOUTHBOUND							TOT	
	People With Prams/ Pushchairs	Wheelchair/ Electric Scooter Users	Severe Mobility Difficulties	Visually Impaired	Able Bodied Adults	Able Bodied Children	People With Prams/ Pushchairs		Wheelchair/ Electric Scooter Users	Severe Mobility Difficulties	Visually Impaired	Able Bodied Adults	Able Bodied Children				
03:00-04:00	0	0	0	0	2	0	2	0	0	0	0	0	0	0	0	2	
08:00-09:00	0	0	0	0	54	0	54	5	0	0	0	86	5	96	150		
12:00-13:00	0	0	0	0	65	0	65	3	0	0	0	95	1	99	164		
17:00-18:00	9	0	0	0	163	11	183	3	0	0	0	126	6	135	318		
21:00-22:00	0	0	0	0	20	0	20	0	0	0	0	25	1	26	46		
TOTAL	9	0	0	0	304	11	324	11	0	0	0	332	13	356	680		

Phase 2

SECTION 1		EASTERN PAVEMENT												TOT			
TIME	NORTHBOUND							TOT	SOUTHBOUND							TOT	
	People With Prams/ Pushchairs	Wheelchair/ Electric Scooter Users	Severe Mobility Difficulties	Visually Impaired	Able Bodied Adults	Able Bodied Children	People With Prams/ Pushchairs		Wheelchair/ Electric Scooter Users	Severe Mobility Difficulties	Visually Impaired	Able Bodied Adults	Able Bodied Children				
03:00-04:00	0	0	0	0	1	0	1	0	0	0	0	5	0	5	6		
08:00-09:00	6	0	0	0	67	25	98	7	0	0	0	109	5	121	219		
12:00-13:00	4	0	0	0	80	0	84	6	0	0	0	118	8	132	216		
17:00-18:00	3	0	0	0	101	5	109	1	0	0	0	90	5	96	205		
21:00-22:00	0	0	0	0	34	0	34	0	0	0	0	14	0	14	48		
TOTAL	13	0	0	0	283	30	326	14	0	0	0	336	18	368	694		

Phase 3

SECTION 1		EASTERN PAVEMENT												TOT			
TIME	NORTHBOUND							TOT	SOUTHBOUND							TOT	
	People With Prams/ Pushchairs	Wheelchair/ Electric Scooter Users	Severe Mobility Difficulties	Visually Impaired	Able Bodied Adults	Able Bodied Children	People With Prams/ Pushchairs		Wheelchair/ Electric Scooter Users	Severe Mobility Difficulties	Visually Impaired	Able Bodied Adults	Able Bodied Children				
03:00-04:00	0	0	0	0	0	0	0	0	0	0	0	1	0	1	1		
08:00-09:00	2	0	0	0	53	10	65	1	0	0	0	161	18	180	245		
12:00-13:00	3	0	0	0	59	0	62	5	0	0	0	104	7	116	178		
17:00-18:00	10	0	0	0	98	6	114	0	0	0	0	53	1	54	168		
21:00-22:00	0	0	0	0	16	0	16	0	0	0	0	8	0	8	24		
TOTAL	15	0	0	0	226	16	257	6	0	0	0	327	26	359	616		

Phase 1

SECTION 1 WESTERN PAVEMENT														TOT			
TIME	NORTHBOUND							TOT	SOUTHBOUND							TOT	
	People With Prams/ Pushchairs	Wheelchair/ Electric Scooter Users	Severe Mobility Difficulties	Visually Impaired	Able Bodied Adults	Able Bodied Children	People With Prams/ Pushchairs		Wheelchair/ Electric Scooter Users	Severe Mobility Difficulties	Visually Impaired	Able Bodied Adults	Able Bodied Children				
03:00-04:00	0	0	0	0	0	0	0	0	0	0	0	0	0	0			
08:00-09:00	2	0	0	0	47	12	61	1	0	0	91	1	93	154			
12:00-13:00	12	0	0	0	116	1	129	3	0	0	110	1	114	243			
17:00-18:00	6	0	0	0	397	8	411	2	0	0	97	1	100	511			
21:00-22:00	0	0	0	0	37	0	37	0	0	0	77	0	77	114			
TOTAL	20	0	0	0	597	21	638	6	0	0	375	3	384	1022			

Phase 2

SECTION 1 WESTERN PAVEMENT														TOT			
TIME	NORTHBOUND							TOT	SOUTHBOUND							TOT	
	People With Prams/ Pushchairs	Wheelchair/ Electric Scooter Users	Severe Mobility Difficulties	Visually Impaired	Able Bodied Adults	Able Bodied Children	People With Prams/ Pushchairs		Wheelchair/ Electric Scooter Users	Severe Mobility Difficulties	Visually Impaired	Able Bodied Adults	Able Bodied Children				
03:00-04:00	0	0	0	0	0	0	0	0	0	0	0	0	0	0			
08:00-09:00	1	0	0	0	50	12	63	2	0	0	108	2	112	175			
12:00-13:00	3	0	0	0	122	1	126	3	0	0	146	1	150	276			
17:00-18:00	3	0	0	0	186	3	192	2	0	0	83	1	86	278			
21:00-22:00	0	0	0	0	39	0	39	0	0	0	39	0	39	78			
TOTAL	7	0	0	0	397	16	420	7	0	0	376	4	387	807			

Phase 3

SECTION 1 WESTERN PAVEMENT														TOT			
TIME	NORTHBOUND							TOT	SOUTHBOUND							TOT	
	People With Prams/ Pushchairs	Wheelchair/ Electric Scooter Users	Severe Mobility Difficulties	Visually Impaired	Able Bodied Adults	Able Bodied Children	People With Prams/ Pushchairs		Wheelchair/ Electric Scooter Users	Severe Mobility Difficulties	Visually Impaired	Able Bodied Adults	Able Bodied Children				
03:00-04:00	0	0	0	0	0	0	0	0	0	0	0	0	0	0			
08:00-09:00	0	0	0	0	116	8	124	0	0	0	108	1	109	233			
12:00-13:00	0	0	0	0	97	55	152	2	0	0	183	1	186	338			
17:00-18:00	7	0	0	0	132	3	142	1	0	0	78	1	80	222			
21:00-22:00	0	0	0	0	22	0	22	0	0	0	16	0	16	38			
TOTAL	7	0	0	0	367	66	440	3	0	0	385	3	391	831			

Phase 1

SECTION 3 EASTERN PAVEMENT														TOT			
TIME	NORTHBOUND							TOT	SOUTHBOUND							TOT	
	People With Prams/ Pushchairs	Wheelchair/ Electric Scooter Users	Severe Mobility Difficulties	Visually Impaired	Able Bodied Adults	Able Bodied Children	People With Prams/ Pushchairs		Wheelchair/ Electric Scooter Users	Severe Mobility Difficulties	Visually Impaired	Able Bodied Adults	Able Bodied Children				
03:00-04:00	0	0	0	0	0	0	0	0	0	0	0	0	0	0	0		
08:00-09:00	5	0	0	0	55	12	72	2	0	0	57	3	62	134			
12:00-13:00	3	0	0	0	111	9	123	5	0	0	211	4	220	343			
17:00-18:00	1	0	0	0	175	2	178	4	0	0	193	11	208	386			
21:00-22:00	0	0	0	0	28	0	28	0	0	0	155	0	155	183			
TOTAL	9	0	0	0	369	23	401	11	0	0	616	18	645	1046			

Phase 2

SECTION 3 EASTERN PAVEMENT														TOT			
TIME	NORTHBOUND							TOT	SOUTHBOUND							TOT	
	People With Prams/ Pushchairs	Wheelchair/ Electric Scooter Users	Severe Mobility Difficulties	Visually Impaired	Able Bodied Adults	Able Bodied Children	People With Prams/ Pushchairs		Wheelchair/ Electric Scooter Users	Severe Mobility Difficulties	Visually Impaired	Able Bodied Adults	Able Bodied Children				
03:00-04:00	0	0	0	0	0	0	0	0	0	0	2	0	2	2			
08:00-09:00	4	0	0	0	103	14	121	6	0	0	72	4	82	203			
12:00-13:00	3	0	0	0	96	2	101	5	0	0	211	7	223	324			
17:00-18:00	0	0	0	0	127	1	128	5	0	0	199	8	212	340			
21:00-22:00	0	0	0	0	35	0	35	1	0	0	127	1	129	164			
TOTAL	7	0	0	0	361	17	385	17	0	0	611	20	648	1033			

Phase 3

SECTION 3 EASTERN PAVEMENT														TOT			
TIME	NORTHBOUND							TOT	SOUTHBOUND							TOT	
	People With Prams/ Pushchairs	Wheelchair/ Electric Scooter Users	Severe Mobility Difficulties	Visually Impaired	Able Bodied Adults	Able Bodied Children	People With Prams/ Pushchairs		Wheelchair/ Electric Scooter Users	Severe Mobility Difficulties	Visually Impaired	Able Bodied Adults	Able Bodied Children				
03:00-04:00	0	0	0	0	1	0	1	0	0	0	0	0	0	1			
08:00-09:00	3	0	0	0	139	20	162	3	0	0	105	3	111	273			
12:00-13:00	3	0	0	0	109	1	113	8	0	0	261	4	273	386			
17:00-18:00	1	0	0	0	259	5	265	3	0	0	241	3	247	512			
21:00-22:00	0	0	0	0	12	0	12	0	0	0	109	0	109	121			
TOTAL	7	0	0	0	520	26	553	14	0	0	716	10	740	1293			

Phase 1

SECTION 3		WESTERN PAVEMENT												TOT			
TIME	NORTHBOUND							TOT	SOUTHBOUND							TOT	
	People With Prams/ Pushchairs	Wheelchair/ Electric Scooter Users	Severe Mobility Difficulties	Visually Impaired	Able Bodied Adults	Able Bodied Children	People With Prams/ Pushchairs		Wheelchair/ Electric Scooter Users	Severe Mobility Difficulties	Visually Impaired	Able Bodied Adults	Able Bodied Children				
03:00-04:00	0	0	0	0	4	0	4	0	0	0	0	0	0	4			
08:00-09:00	4	0	1	0	587	11	603	1	0	1	0	151	4	157			
12:00-13:00	15	1	0	0	470	21	507	6	0	0	0	554	9	569			
17:00-18:00	5	0	0	0	731	8	744	4	1	0	0	845	13	863			
21:00-22:00	0	0	0	0	65	0	65	0	0	0	0	1054	1	1055			
TOTAL	24	1	1	0	1857	40	1923	11	1	1	0	2604	27	2644			

Phase 2

SECTION 3		WESTERN PAVEMENT												TOT			
TIME	NORTHBOUND							TOT	SOUTHBOUND							TOT	
	People With Prams/ Pushchairs	Wheelchair/ Electric Scooter Users	Severe Mobility Difficulties	Visually Impaired	Able Bodied Adults	Able Bodied Children	People With Prams/ Pushchairs		Wheelchair/ Electric Scooter Users	Severe Mobility Difficulties	Visually Impaired	Able Bodied Adults	Able Bodied Children				
03:00-04:00	0	0	0	0	0	0	0	0	0	0	0	0	0	0			
08:00-09:00	3	0	0	0	910	15	928	2	0	0	0	129	5	136			
12:00-13:00	4	0	0	0	484	9	497	8	0	0	0	770	4	782			
17:00-18:00	7	1	0	0	619	24	651	15	0	0	0	1051	6	1072			
21:00-22:00	0	0	0	0	122	0	122	0	0	0	0	379	1	380			
TOTAL	14	1	0	0	2135	48	2198	25	0	0	0	2329	16	2370			

Phase 3

SECTION 3		WESTERN PAVEMENT												TOT			
TIME	NORTHBOUND							TOT	SOUTHBOUND							TOT	
	People With Prams/ Pushchairs	Wheelchair/ Electric Scooter Users	Severe Mobility Difficulties	Visually Impaired	Able Bodied Adults	Able Bodied Children	People With Prams/ Pushchairs		Wheelchair/ Electric Scooter Users	Severe Mobility Difficulties	Visually Impaired	Able Bodied Adults	Able Bodied Children				
03:00-04:00	0	0	0	0	2	0	2	0	0	0	0	0	0	2			
08:00-09:00	3	1	0	0	997	8	1009	2	0	0	0	169	6	177			
12:00-13:00	3	0	2	0	377	62	444	9	0	0	0	502	5	516			
17:00-18:00	8	1	0	0	888	7	904	6	0	0	1	1244	4	1255			
21:00-22:00	0	0	0	0	40	0	40	0	0	0	0	843	0	843			
TOTAL	14	2	2	0	2304	77	2399	17	0	0	1	2758	15	2791			

Phase 1

SECTION 4		EASTERN PAVEMENT													TOT		
TIME	NORTHBOUND							TOT	SOUTHBOUND							TOT	
	People With Prams/ Pushchairs	Wheelchair/ Electric Scooter Users	Severe Mobility Difficulties	Visually Impaired	Able Bodied Adults	Able Bodied Children	People With Prams/ Pushchairs		Wheelchair/ Electric Scooter Users	Severe Mobility Difficulties	Visually Impaired	Able Bodied Adults	Able Bodied Children				
03:00-04:00	0	0	0	0	0	0	0	0	0	0	0	0	0	0	0	0	
08:00-09:00	3	0	0	0	85	6	94	2	0	0	0	72	0	74	0	168	
12:00-13:00	2	0	0	0	210	4	216	4	0	0	0	227	5	236	5	452	
17:00-18:00	4	0	0	0	217	7	228	13	0	0	0	323	9	345	9	573	
21:00-22:00	1	0	0	0	34	0	35	0	0	0	0	158	0	158	0	193	
TOTAL	10	0	0	0	546	17	573	19	0	0	0	780	14	813	14	1386	

Phase 2

SECTION 4		EASTERN PAVEMENT													TOT		
TIME	NORTHBOUND							TOT	SOUTHBOUND							TOT	
	People With Prams/ Pushchairs	Wheelchair/ Electric Scooter Users	Severe Mobility Difficulties	Visually Impaired	Able Bodied Adults	Able Bodied Children	People With Prams/ Pushchairs		Wheelchair/ Electric Scooter Users	Severe Mobility Difficulties	Visually Impaired	Able Bodied Adults	Able Bodied Children				
03:00-04:00	0	0	0	0	0	0	0	0	0	0	0	2	0	2	0	2	
08:00-09:00	12	0	0	0	140	8	160	5	0	0	0	85	5	95	5	255	
12:00-13:00	2	0	1	0	225	4	232	3	0	0	0	261	3	267	3	499	
17:00-18:00	2	0	0	0	166	4	172	10	0	0	0	427	12	449	12	621	
21:00-22:00	0	0	0	0	50	0	50	0	0	0	0	164	1	165	1	215	
TOTAL	16	0	1	0	581	16	614	18	0	0	0	939	21	978	21	1592	

Phase 3

SECTION 4		EASTERN PAVEMENT													TOT		
TIME	NORTHBOUND							TOT	SOUTHBOUND							TOT	
	People With Prams/ Pushchairs	Wheelchair/ Electric Scooter Users	Severe Mobility Difficulties	Visually Impaired	Able Bodied Adults	Able Bodied Children	People With Prams/ Pushchairs		Wheelchair/ Electric Scooter Users	Severe Mobility Difficulties	Visually Impaired	Able Bodied Adults	Able Bodied Children				
03:00-04:00	0	0	0	0	0	0	0	0	0	0	0	0	0	0	0	0	
08:00-09:00	4	0	0	0	179	4	187	2	0	0	0	98	5	105	5	292	
12:00-13:00	2	0	0	0	136	4	142	7	0	0	0	217	3	227	3	369	
17:00-18:00	3	0	0	0	241	5	249	4	0	0	0	499	2	505	2	754	
21:00-22:00	0	0	0	0	21	0	21	0	0	0	0	80	0	80	0	101	
TOTAL	9	0	0	0	577	13	599	13	0	0	0	894	10	917	10	1516	

Phase 1

SECTION 4 WESTERN PAVEMENT														TOT			
TIME	NORTHBOUND							TOT	SOUTHBOUND							TOT	
	People With Prams/ Pushchairs	Wheelchair/ Electric Scooter Users	Severe Mobility Difficulties	Visually Impaired	Able Bodied Adults	Able Bodied Children	People With Prams/ Pushchairs		Wheelchair/ Electric Scooter Users	Severe Mobility Difficulties	Visually Impaired	Able Bodied Adults	Able Bodied Children				
03:00-04:00	0	0	0	0	3	0	3	0	0	0	0	5	0	5	8		
08:00-09:00	7	0	0	0	1015	6	1028	2	0	0	0	150	10	162	1190		
12:00-13:00	8	4	0	0	745	15	772	14	0	0	0	797	18	829	1601		
17:00-18:00	5	1	0	0	525	11	542	20	0	0	0	1612	17	1649	2191		
21:00-22:00	0	0	0	0	87	0	87	0	0	0	0	530	0	530	617		
TOTAL	20	5	0	0	2375	32	2432	36	0	0	0	3094	45	3175	5607		

Phase 2

SECTION 4 WESTERN PAVEMENT														TOT			
TIME	NORTHBOUND							TOT	SOUTHBOUND							TOT	
	People With Prams/ Pushchairs	Wheelchair/ Electric Scooter Users	Severe Mobility Difficulties	Visually Impaired	Able Bodied Adults	Able Bodied Children	People With Prams/ Pushchairs		Wheelchair/ Electric Scooter Users	Severe Mobility Difficulties	Visually Impaired	Able Bodied Adults	Able Bodied Children				
03:00-04:00	0	0	0	0	1	0	1	0	0	0	0	7	0	7	8		
08:00-09:00	6	0	0	0	1210	12	1228	1	0	0	0	135	7	143	1371		
12:00-13:00	12	0	0	0	737	84	833	9	0	0	0	964	15	988	1821		
17:00-18:00	6	0	0	0	567	19	592	17	0	0	0	2631	33	2681	3273		
21:00-22:00	0	0	0	0	148	0	148	0	0	0	0	503	4	507	655		
TOTAL	24	0	0	0	2663	115	2802	27	0	0	0	4240	59	4326	7128		

Phase 3

SECTION 4 WESTERN PAVEMENT														TOT			
TIME	NORTHBOUND							TOT	SOUTHBOUND							TOT	
	People With Prams/ Pushchairs	Wheelchair/ Electric Scooter Users	Severe Mobility Difficulties	Visually Impaired	Able Bodied Adults	Able Bodied Children	People With Prams/ Pushchairs		Wheelchair/ Electric Scooter Users	Severe Mobility Difficulties	Visually Impaired	Able Bodied Adults	Able Bodied Children				
03:00-04:00	0	0	0	0	3	0	3	0	0	0	0	7	0	7	10		
08:00-09:00	7	0	1	0	1414	9	1431	2	0	0	0	177	11	190	1621		
12:00-13:00	25	0	5	0	697	134	861	26	1	0	1	702	123	853	1714		
17:00-18:00	20	0	0	0	581	5	606	34	4	1	0	1605	86	1730	2336		
21:00-22:00	0	0	0	0	42	0	42	0	0	0	0	440	0	440	482		
TOTAL	52	0	6	0	2737	148	2943	62	5	1	1	2931	220	3220	6163		

Phase 1

SECTION 6		EASTERN PAVEMENT															
TIME	NORTHBOUND							TOT	SOUTHBOUND							TOT	TOT
	People With Prams/ Pushchairs	Wheelchair/ Electric Scooter Users	Severe Mobility Difficulties	Visually Impaired	Able Bodied Adults	Able Bodied Children	People With Prams/ Pushchairs		Wheelchair/ Electric Scooter Users	Severe Mobility Difficulties	Visually Impaired	Able Bodied Adults	Able Bodied Children				
03:00-04:00	0	0	0	0	1	0	1	0	0	0	0	0	0	0	0	0	1
08:00-09:00	1	0	0	0	92	1	94	1	0	0	0	0	51	1	53	147	
12:00-13:00	6	0	0	0	151	4	161	1	0	0	0	0	237	5	243	404	
17:00-18:00	2	0	0	0	110	1	113	9	0	0	0	0	399	3	411	524	
21:00-22:00	0	0	0	0	23	0	23	0	0	0	0	0	143	0	143	166	
TOTAL	9	0	0	0	377	6	392	11	0	0	0	0	830	9	850	1242	

Phase 2

SECTION 6		EASTERN PAVEMENT														TOT	
TIME	NORTHBOUND							TOT	SOUTHBOUND							TOT	TOT
	People With Prams/ Pushchairs	Wheelchair/ Electric Scooter Users	Severe Mobility Difficulties	Visually Impaired	Able Bodied Adults	Able Bodied Children	People With Prams/ Pushchairs		Wheelchair/ Electric Scooter Users	Severe Mobility Difficulties	Visually Impaired	Able Bodied Adults	Able Bodied Children				
03:00-04:00	0	0	0	0	0	0	0	0	0	0	0	0	3	0	3	3	
08:00-09:00	1	0	0	0	176	0	177	4	0	0	0	0	58	2	64	241	
12:00-13:00	0	0	0	0	213	6	219	2	0	0	0	0	334	3	339	558	
17:00-18:00	2	1	0	0	136	4	143	10	0	0	0	0	664	9	683	826	
21:00-22:00	0	0	0	0	43	0	43	0	0	0	0	0	138	1	139	182	
TOTAL	3	1	0	0	568	10	582	16	0	0	0	0	1197	15	1228	1810	

Phase 3

SECTION 6		EASTERN PAVEMENT															
TIME	NORTHBOUND							TOT	SOUTHBOUND							TOT	TOT
	People With Prams/ Pushchairs	Wheelchair/ Electric Scooter Users	Severe Mobility Difficulties	Visually Impaired	Able Bodied Adults	Able Bodied Children	People With Prams/ Pushchairs		Wheelchair/ Electric Scooter Users	Severe Mobility Difficulties	Visually Impaired	Able Bodied Adults	Able Bodied Children				
03:00-04:00	0	0	0	0	0	0	0	0	0	0	0	0	0	0	0	0	
08:00-09:00	1	0	0	0	231	1	233	2	0	0	0	0	48	4	54	287	
12:00-13:00	3	0	0	0	166	1	170	1	0	0	0	0	182	1	184	354	
17:00-18:00	2	0	0	0	240	0	242	3	0	0	0	0	282	7	292	534	
21:00-22:00	0	0	0	0	40	0	40	0	0	0	0	0	107	0	107	147	
TOTAL	6	0	0	0	677	2	685	6	0	0	0	0	619	12	637	1322	

Phase 1

WESTERN PAVEMENT														TOT			
SECTION 6	NORTHBOUND							TOT	SOUTHBOUND							TOT	
	People With Prams/ Pushchairs	Wheelchair/ Electric Scooter Users	Severe Mobility Difficulties	Visually Impaired	Able Bodied Adults	Able Bodied Children	People With Prams/ Pushchairs		Wheelchair/ Electric Scooter Users	Severe Mobility Difficulties	Visually Impaired	Able Bodied Adults	Able Bodied Children				
TIME	People With Prams/ Pushchairs	Wheelchair/ Electric Scooter Users	Severe Mobility Difficulties	Visually Impaired	Able Bodied Adults	Able Bodied Children	TOT	People With Prams/ Pushchairs	Wheelchair/ Electric Scooter Users	Severe Mobility Difficulties	Visually Impaired	Able Bodied Adults	Able Bodied Children	TOT	TOT		
03:00-04:00	0	0	0	0	3	0	3	0	0	0	0	25	0	25	28		
08:00-09:00	9	0	0	0	885	11	905	0	0	0	0	143	10	153	1058		
12:00-13:00	7	1	0	0	600	13	621	11	0	0	0	758	14	783	1404		
17:00-18:00	4	0	0	0	399	11	414	31	0	1	0	1680	19	1731	2145		
21:00-22:00	0	0	0	0	98	0	98	0	0	0	0	504	0	504	602		
TOTAL	20	1	0	0	1985	35	2041	42	0	1	0	3110	43	3196	5237		

Phase 2

WESTERN PAVEMENT														TOT			
SECTION 6	NORTHBOUND							TOT	SOUTHBOUND							TOT	
	People With Prams/ Pushchairs	Wheelchair/ Electric Scooter Users	Severe Mobility Difficulties	Visually Impaired	Able Bodied Adults	Able Bodied Children	People With Prams/ Pushchairs		Wheelchair/ Electric Scooter Users	Severe Mobility Difficulties	Visually Impaired	Able Bodied Adults	Able Bodied Children				
TIME	People With Prams/ Pushchairs	Wheelchair/ Electric Scooter Users	Severe Mobility Difficulties	Visually Impaired	Able Bodied Adults	Able Bodied Children	TOT	People With Prams/ Pushchairs	Wheelchair/ Electric Scooter Users	Severe Mobility Difficulties	Visually Impaired	Able Bodied Adults	Able Bodied Children	TOT	TOT		
03:00-04:00	0	0	0	0	1	0	1	0	0	0	0	7	0	7	8		
08:00-09:00	8	0	0	0	1057	20	1085	0	0	0	0	110	7	117	1202		
12:00-13:00	4	0	0	0	643	3	650	10	0	0	0	747	10	767	1417		
17:00-18:00	2	0	0	0	366	5	373	29	0	0	0	1929	32	1990	2363		
21:00-22:00	0	0	0	0	115	0	115	1	0	0	0	540	2	543	658		
TOTAL	14	0	0	0	2182	28	2224	40	0	0	0	3333	51	3424	5648		

Phase 3

WESTERN PAVEMENT														TOT			
SECTION 6	NORTHBOUND							TOT	SOUTHBOUND							TOT	
	People With Prams/ Pushchairs	Wheelchair/ Electric Scooter Users	Severe Mobility Difficulties	Visually Impaired	Able Bodied Adults	Able Bodied Children	People With Prams/ Pushchairs		Wheelchair/ Electric Scooter Users	Severe Mobility Difficulties	Visually Impaired	Able Bodied Adults	Able Bodied Children				
TIME	People With Prams/ Pushchairs	Wheelchair/ Electric Scooter Users	Severe Mobility Difficulties	Visually Impaired	Able Bodied Adults	Able Bodied Children	TOT	People With Prams/ Pushchairs	Wheelchair/ Electric Scooter Users	Severe Mobility Difficulties	Visually Impaired	Able Bodied Adults	Able Bodied Children	TOT	TOT		
03:00-04:00	0	0	0	0	1	0	1	0	0	0	0	0	0	0	1		
08:00-09:00	11	0	1	0	1254	10	1276	2	0	0	0	152	7	161	1437		
12:00-13:00	9	0	0	0	612	10	631	17	0	3	0	578	5	603	1234		
17:00-18:00	2	0	1	0	668	8	679	19	0	1	0	1267	14	1301	1980		
21:00-22:00	0	0	0	0	68	0	68	0	0	0	0	392	1	393	461		
TOTAL	22	0	2	0	2603	28	2655	38	0	4	0	2389	27	2458	5113		

Phase 1

SECTION 7	EASTERN PAVEMENT														TOT		
	NORTHBOUND							TOT	SOUTHBOUND							TOT	
	People With Prams/ Pushchairs	Wheelchair/ Electric Scooter Users	Severe Mobility Difficulties	Visually Impaired	Able Bodied Adults	Able Bodied Children	People With Prams/ Pushchairs		Wheelchair/ Electric Scooter Users	Severe Mobility Difficulties	Visually Impaired	Able Bodied Adults	Able Bodied Children				
TIME																	
03:00-04:00	0	0	0	0	0	0	0	0	0	0	0	0	3	0	3	3	
08:00-09:00	0	0	0	0	76	1	77	0	0	0	0	0	182	1	183	260	
12:00-13:00	3	0	0	0	119	7	129	7	0	0	0	0	161	3	171	300	
17:00-18:00	7	0	0	0	366	7	380	1	0	0	0	0	168	6	175	555	
21:00-22:00	0	0	0	0	126	0	126	0	0	0	0	0	63	0	63	189	
TOTAL	10	0	0	0	687	15	712	8	0	0	0	0	577	10	595	1307	

Phase 2

SECTION 7	EASTERN PAVEMENT														TOT		
	NORTHBOUND							TOT	SOUTHBOUND							TOT	
	People With Prams/ Pushchairs	Wheelchair/ Electric Scooter Users	Severe Mobility Difficulties	Visually Impaired	Able Bodied Adults	Able Bodied Children	People With Prams/ Pushchairs		Wheelchair/ Electric Scooter Users	Severe Mobility Difficulties	Visually Impaired	Able Bodied Adults	Able Bodied Children				
TIME																	
03:00-04:00	0	0	0	0	0	0	0	0	0	0	0	0	0	0	0	0	
08:00-09:00	0	0	0	0	236	0	236	1	0	0	0	0	49	1	51	287	
12:00-13:00	2	0	0	0	163	2	167	3	0	0	0	0	162	1	166	333	
17:00-18:00	0	0	0	0	141	0	141	2	0	0	0	0	246	3	251	392	
21:00-22:00	0	0	0	0	46	0	46	0	0	0	0	0	73	1	74	120	
TOTAL	2	0	0	0	586	2	590	6	0	0	0	0	530	6	542	1132	

Phase 3

SECTION 7	EASTERN PAVEMENT														TOT		
	NORTHBOUND							TOT	SOUTHBOUND							TOT	
	People With Prams/ Pushchairs	Wheelchair/ Electric Scooter Users	Severe Mobility Difficulties	Visually Impaired	Able Bodied Adults	Able Bodied Children	People With Prams/ Pushchairs		Wheelchair/ Electric Scooter Users	Severe Mobility Difficulties	Visually Impaired	Able Bodied Adults	Able Bodied Children				
TIME																	
03:00-04:00	0	0	0	0	0	0	0	0	0	0	0	0	0	0	0	0	
08:00-09:00	1	0	0	0	155	1	157	0	0	0	0	0	68	0	68	225	
12:00-13:00	2	0	0	0	147	2	151	2	0	0	0	0	260	1	263	414	
17:00-18:00	2	0	0	0	150	0	152	4	0	0	0	0	437	0	441	593	
21:00-22:00	0	0	0	0	21	0	21	0	0	0	0	0	76	0	76	97	
TOTAL	5	0	0	0	473	3	481	6	0	0	0	0	841	1	848	1329	

Phase 1

SECTION 7 WESTERN PAVEMENT														TOT			
TIME	NORTHBOUND							TOT	SOUTHBOUND							TOT	
	People With Prams/ Pushchairs	Wheelchair/ Electric Scooter Users	Severe Mobility Difficulties	Visually Impaired	Able Bodied Adults	Able Bodied Children	People With Prams/ Pushchairs		Wheelchair/ Electric Scooter Users	Severe Mobility Difficulties	Visually Impaired	Able Bodied Adults	Able Bodied Children				
03:00-04:00	0	0	0	0	1	0	1	0	0	0	0	1	0	1	2		
08:00-09:00	8	0	0	0	890	9	907	0	0	0	0	146	3	149	1056		
12:00-13:00	5	0	0	0	646	4	655	12	0	1	0	810	14	837	1492		
17:00-18:00	7	0	0	0	434	8	449	24	0	0	0	1700	14	1738	2187		
21:00-22:00	0	0	0	0	141	0	141	0	0	0	0	431	0	431	572		
TOTAL	20	0	0	0	2112	21	2153	36	0	1	0	3088	31	3156	5309		

Phase 2

SECTION 7 WESTERN PAVEMENT														TOT			
TIME	NORTHBOUND							TOT	SOUTHBOUND							TOT	
	People With Prams/ Pushchairs	Wheelchair/ Electric Scooter Users	Severe Mobility Difficulties	Visually Impaired	Able Bodied Adults	Able Bodied Children	People With Prams/ Pushchairs		Wheelchair/ Electric Scooter Users	Severe Mobility Difficulties	Visually Impaired	Able Bodied Adults	Able Bodied Children				
03:00-04:00	0	0	0	0	0	0	0	0	0	0	0	4	0	4	4		
08:00-09:00	8	0	0	0	1000	18	1026	1	0	0	0	97	4	102	1128		
12:00-13:00	5	0	0	0	536	6	547	3	0	0	0	583	4	590	1137		
17:00-18:00	2	0	0	0	360	8	370	15	0	0	0	1361	9	1385	1755		
21:00-22:00	0	0	0	0	150	4	154	0	0	0	0	410	1	411	565		
TOTAL	15	0	0	0	2046	36	2097	19	0	0	0	2455	18	2492	4589		

Phase 3

SECTION 7 WESTERN PAVEMENT														TOT			
TIME	NORTHBOUND							TOT	SOUTHBOUND							TOT	
	People With Prams/ Pushchairs	Wheelchair/ Electric Scooter Users	Severe Mobility Difficulties	Visually Impaired	Able Bodied Adults	Able Bodied Children	People With Prams/ Pushchairs		Wheelchair/ Electric Scooter Users	Severe Mobility Difficulties	Visually Impaired	Able Bodied Adults	Able Bodied Children				
03:00-04:00	0	0	0	0	1	0	1	0	0	0	0	2	0	2	3		
08:00-09:00	11	0	0	1	1257	16	1285	2	0	0	0	155	5	162	1447		
12:00-13:00	13	0	0	1	587	13	614	18	0	0	1	604	8	631	1245		
17:00-18:00	2	0	0	0	465	3	470	19	1	0	2	1275	16	1313	1783		
21:00-22:00	0	0	0	0	60	0	60	0	0	0	0	480	1	481	541		
TOTAL	26	0	0	2	2370	32	2430	39	1	0	3	2516	30	2589	5019		

Phase 1

SECTION 8		SECTION 8A														
TIME	EASTBOUND							TOT	WESTBOUND							TOT
	People With Prams/ Pushchairs	Wheelchair/ Electric Scooter Users	Severe Mobility Difficulties	Visually Impaired	Able Bodied Adults	Able Bodied Children	People With Prams/ Pushchairs		Wheelchair/ Electric Scooter Users	Severe Mobility Difficulties	Visually Impaired	Able Bodied Adults	Able Bodied Children			
03:00-04:00	0	0	0	0	4	0	4	0	0	0	2	0	2	6		
08:00-09:00	0	0	0	0	131	2	133	0	0	0	101	12	113	246		
12:00-13:00	3	0	0	0	275	4	282	4	0	2	181	11	198	480		
17:00-18:00	2	0	0	0	298	4	304	8	0	2	475	13	498	802		
21:00-22:00	0	0	0	0	89	0	89	0	0	0	96	4	100	189		
TOTAL	5	0	0	0	797	10	812	12	0	4	855	40	911	1723		

Phase 2

SECTION 8		SECTION 8A												TOT		
TIME	EASTBOUND							TOT	WESTBOUND							TOT
	People With Prams/ Pushchairs	Wheelchair/ Electric Scooter Users	Severe Mobility Difficulties	Visually Impaired	Able Bodied Adults	Able Bodied Children	People With Prams/ Pushchairs		Wheelchair/ Electric Scooter Users	Severe Mobility Difficulties	Visually Impaired	Able Bodied Adults	Able Bodied Children			
03:00-04:00	0	0	0	0	5	0	5	0	0	0	0	0	0	5		
08:00-09:00	0	0	1	0	183	3	187	0	0	0	140	12	152	339		
12:00-13:00	1	0	4	0	228	3	236	1	0	0	142	5	148	384		
17:00-18:00	0	0	1	0	232	3	236	5	0	0	309	0	314	550		
21:00-22:00	0	0	1	0	90	4	95	0	0	0	123	0	123	218		
TOTAL	1	0	7	0	738	13	759	6	0	0	714	17	737	1496		

Phase 3

SECTION 8		SECTION 8A														
TIME	EASTBOUND							TOT	WESTBOUND							TOT
	People With Prams/ Pushchairs	Wheelchair/ Electric Scooter Users	Severe Mobility Difficulties	Visually Impaired	Able Bodied Adults	Able Bodied Children	People With Prams/ Pushchairs		Wheelchair/ Electric Scooter Users	Severe Mobility Difficulties	Visually Impaired	Able Bodied Adults	Able Bodied Children			
03:00-04:00	0	0	0	0	1	0	1	2	0	0	0	0	2	3		
08:00-09:00	1	0	0	0	205	6	212	3	0	0	129	15	147	359		
12:00-13:00	4	0	0	0	280	2	286	3	0	3	292	1	299	585		
17:00-18:00	3	0	0	0	301	5	309	10	0	2	630	6	648	957		
21:00-22:00	0	0	0	0	65	0	65	1	0	0	241	1	243	308		
TOTAL	8	0	0	0	852	13	873	19	0	5	1292	23	1339	2212		

Phase 1

SECTION 8		SECTION 8B														
TIME	EASTBOUND							TOT	WESTBOUND							TOT
	People With Prams/ Pushchairs	Wheelchair/ Electric Scooter Users	Severe Mobility Difficulties	Visually Impaired	Able Bodied Adults	Able Bodied Children	People With Prams/ Pushchairs		Wheelchair/ Electric Scooter Users	Severe Mobility Difficulties	Visually Impaired	Able Bodied Adults	Able Bodied Children			
03:00-04:00	0	0	0	0	4	0	4	0	0	0	0	2	0	2	6	
08:00-09:00	9	0	0	0	1118	9	1136	0	0	0	0	247	6	253	1389	
12:00-13:00	11	0	0	0	726	10	747	8	0	0	0	848	18	874	1621	
17:00-18:00	5	0	0	0	490	6	501	27	0	1	0	1778	7	1813	2314	
21:00-22:00	0	0	0	0	147	2	149	0	0	0	0	600	2	602	751	
TOTAL	25	0	0	0	2485	27	2537	35	0	1	0	3475	33	3544	6081	

Phase 2

SECTION 8		SECTION 8B												TOT		
TIME	EASTBOUND							TOT	WESTBOUND							TOT
	People With Prams/ Pushchairs	Wheelchair/ Electric Scooter Users	Severe Mobility Difficulties	Visually Impaired	Able Bodied Adults	Able Bodied Children	People With Prams/ Pushchairs		Wheelchair/ Electric Scooter Users	Severe Mobility Difficulties	Visually Impaired	Able Bodied Adults	Able Bodied Children			
03:00-04:00	0	0	0	0	0	0	0	0	0	0	0	11	0	11	11	
08:00-09:00	12	0	0	0	1276	21	1309	0	0	0	0	192	7	199	1508	
12:00-13:00	9	1	0	0	908	9	927	8	1	0	0	695	16	720	1647	
17:00-18:00	6	0	0	0	636	11	653	26	0	0	0	1927	64	2017	2670	
21:00-22:00	0	0	0	0	187	1	188	3	0	0	0	721	16	740	928	
TOTAL	27	1	0	0	3007	42	3077	37	1	0	0	3546	103	3687	6764	

Phase 3

SECTION 8		SECTION 8B														
TIME	EASTBOUND							TOT	WESTBOUND							TOT
	People With Prams/ Pushchairs	Wheelchair/ Electric Scooter Users	Severe Mobility Difficulties	Visually Impaired	Able Bodied Adults	Able Bodied Children	People With Prams/ Pushchairs		Wheelchair/ Electric Scooter Users	Severe Mobility Difficulties	Visually Impaired	Able Bodied Adults	Able Bodied Children			
03:00-04:00	0	0	0	0	2	0	2	0	0	0	0	1	0	1	3	
08:00-09:00	10	0	0	0	1410	11	1431	2	0	0	0	238	17	257	1688	
12:00-13:00	11	0	1	0	651	8	671	15	0	1	0	511	4	531	1202	
17:00-18:00	7	0	0	0	759	4	770	18	0	0	0	1217	11	1246	2016	
21:00-22:00	0	0	0	0	97	0	97	0	0	0	0	481	3	484	581	
TOTAL	28	0	1	0	2919	23	2971	35	0	1	0	2448	35	2519	5490	

Appendix D – Screenline Vehicle Counts

Phase 1

SECTION 1	NORTHBOUND											TOT	SOUTHBOUND											TOT
	Car (Including Private Hire Vehicles)	Black Taxis	LGV - Freight (Vans etc)	LGV - Passenger (Minibuses etc)	MGV - Freight (2 Axles & 6 Tyres)	MGV - Passenger (2 Axles & 6 Tyres)	HGV Freight (3 Or More Axles)	Buses (Public Service - 9 Seats Or More)	Coaches (Private - 9 Seats Or More)	Motorcycles	Pedal Cycles		Car (Including Private Hire Vehicles)	Black Taxis	LGV - Freight (Vans etc)	LGV - Passenger (Minibuses etc)	MGV - Freight (2 Axles & 6 Tyres)	MGV - Passenger (2 Axles & 6 Tyres)	HGV Freight (3 Or More Axles)	Buses (Public Service - 9 Seats Or More)	Coaches (Private - 9 Seats Or More)	Motorcycles	Pedal Cycles	
TIME																								
03:00-04:00	2	0	0	0	0	0	0	0	0	0	0	2	3	1	0	0	0	0	0	0	0	0	0	4
08:00-09:00	346	99	9	2	6	0	1	4	0	46	59	572	282	72	14	5	0	0	1	2	0	40	144	566
12:00-13:00	211	144	25	0	10	0	4	5	4	13	24	440	269	153	34	1	8	0	0	0	0	23	37	525
17:00-18:00	294	136	12	2	1	1	0	5	0	33	101	585	315	124	10	2	2	0	2	0	1	43	70	569
21:00-22:00	115	63	3	0	0	0	0	3	0	9	27	220	139	87	2	0	2	0	0	0	1	15	27	272
TOTAL	968	442	49	4	17	1	5	17	4	101	211	1819	1008	437	60	8	18	0	3	2	1	121	278	1936

Phase 2

SECTION 1	NORTHBOUND											TOT	SOUTHBOUND											TOT
	Car (Including Private Hire Vehicles)	Black Taxis	LGV - Freight (Vans etc)	LGV - Passenger (Minibuses etc)	MGV - Freight (2 Axles & 6 Tyres)	MGV - Passenger (2 Axles & 6 Tyres)	HGV Freight (3 Or More Axles)	Buses (Public Service - 9 Seats Or More)	Coaches (Private - 9 Seats Or More)	Motorcycles	Pedal Cycles		Car (Including Private Hire Vehicles)	Black Taxis	LGV - Freight (Vans etc)	LGV - Passenger (Minibuses etc)	MGV - Freight (2 Axles & 6 Tyres)	MGV - Passenger (2 Axles & 6 Tyres)	HGV Freight (3 Or More Axles)	Buses (Public Service - 9 Seats Or More)	Coaches (Private - 9 Seats Or More)	Motorcycles	Pedal Cycles	
TIME																								
03:00-04:00	4	0	1	0	2	0	0	0	0	0	1	8	2	1	0	0	1	0	0	0	0	0	1	5
08:00-09:00	356	98	20	3	12	0	1	4	0	53	70	617	380	88	19	4	12	2	1	0	0	47	141	694
12:00-13:00	243	176	35	1	8	1	1	4	1	11	36	517	248	164	31	1	11	0	0	0	27	31	513	
17:00-18:00	315	152	10	2	0	1	0	5	1	31	100	617	337	137	11	3	0	0	1	0	65	88	643	
21:00-22:00	130	71	3	0	0	0	0	3	1	6	34	248	162	95	2	0	0	0	0	0	24	25	308	
TOTAL	1048	497	69	6	22	2	2	16	3	101	241	2007	1129	485	63	8	24	2	2	0	1	163	286	2163

Phase 3

SECTION 1	NORTHBOUND											TOT	SOUTHBOUND											TOT
	Car (Including Private Hire Vehicles)	Black Taxis	LGV - Freight (Vans etc)	LGV - Passenger (Minibuses etc)	MGV - Freight (2 Axles & 6 Tyres)	MGV - Passenger (2 Axles & 6 Tyres)	HGV Freight (3 Or More Axles)	Buses (Public Service - 9 Seats Or More)	Coaches (Private - 9 Seats Or More)	Motorcycles	Pedal Cycles		Car (Including Private Hire Vehicles)	Black Taxis	LGV - Freight (Vans etc)	LGV - Passenger (Minibuses etc)	MGV - Freight (2 Axles & 6 Tyres)	MGV - Passenger (2 Axles & 6 Tyres)	HGV Freight (3 Or More Axles)	Buses (Public Service - 9 Seats Or More)	Coaches (Private - 9 Seats Or More)	Motorcycles	Pedal Cycles	
TIME																								
03:00-04:00	6	0	1	0	0	0	0	0	0	0	0	7	1	0	0	0	0	0	0	0	0	0	0	1
08:00-09:00	403	88	14	1	9	0	1	4	1	68	71	660	383	84	20	3	11	2	0	0	0	44	135	682
12:00-13:00	338	171	15	1	5	2	0	5	1	19	21	578	402	158	25	2	13	0	0	0	17	28	645	
17:00-18:00	385	133	18	2	3	0	1	5	0	25	93	665	419	142	15	1	3	1	1	0	54	56	692	
21:00-22:00	158	87	0	0	1	0	0	3	0	4	19	272	244	80	1	0	0	0	0	0	9	15	349	
TOTAL	1290	479	48	4	18	2	2	17	2	116	204	2182	1449	464	61	6	27	3	1	0	124	234	2369	

Phase 1

SECTION 3												SECTION 3													
NORTHBOUND												SOUTHBOUND													
TIME	Car (Including Private Hire Vehicles)	Black Taxis	LGV - Freight (Vans etc)	LGV - Passenger (Minibuses etc)	MGV - Freight (2 Axles & 6 Tyres)	MGV - Passenger (2 Axles & 6 Tyres)	HGV Freight (3 Or More Axles)	Buses (Public Service - 9 Seats Or More)	Coaches (Private - 9 Seats Or More)	Motorcycles	Pedal Cycles	TOT	Car (Including Private Hire Vehicles)	Black Taxis	LGV - Freight (Vans etc)	LGV - Passenger (Minibuses etc)	MGV - Freight (2 Axles & 6 Tyres)	MGV - Passenger (2 Axles & 6 Tyres)	HGV Freight (3 Or More Axles)	Buses (Public Service - 9 Seats Or More)	Coaches (Private - 9 Seats Or More)	Motorcycles	Pedal Cycles	TOT	
03:00-04:00	3	0	0	0	0	0	0	0	0	0	0	3	4	0	0	0	0	0	0	0	0	0	2	0	6
08:00-09:00	170	36	23	0	11	0	0	4	1	13	62	320	158	22	26	0	11	0	1	5	0	33	117	373	
12:00-13:00	122	74	36	0	11	0	0	5	0	10	27	285	156	82	41	1	6	0	0	5	4	14	31	340	
17:00-18:00	161	109	15	1	3	1	0	5	0	25	93	413	137	79	7	0	0	0	2	5	1	12	63	306	
21:00-22:00	61	19	2	0	0	0	0	3	0	9	20	114	79	38	4	0	2	0	0	3	0	10	23	159	
TOTAL	517	238	76	1	25	1	0	17	1	57	202	1135	534	221	78	1	19	0	3	18	5	71	234	1184	

Phase 2

SECTION 3												SECTION 3												
NORTHBOUND												SOUTHBOUND												
TIME	Car (Including Private Hire Vehicles)	Black Taxis	LGV - Freight (Vans etc)	LGV - Passenger (Minibuses etc)	MGV - Freight (2 Axles & 6 Tyres)	MGV - Passenger (2 Axles & 6 Tyres)	HGV Freight (3 Or More Axles)	Buses (Public Service - 9 Seats Or More)	Coaches (Private - 9 Seats Or More)	Motorcycles	Pedal Cycles	TOT	Car (Including Private Hire Vehicles)	Black Taxis	LGV - Freight (Vans etc)	LGV - Passenger (Minibuses etc)	MGV - Freight (2 Axles & 6 Tyres)	MGV - Passenger (2 Axles & 6 Tyres)	HGV Freight (3 Or More Axles)	Buses (Public Service - 9 Seats Or More)	Coaches (Private - 9 Seats Or More)	Motorcycles	Pedal Cycles	TOT
03:00-04:00	0	0	0	0	3	0	0	0	0	0	1	4	2	0	0	0	1	0	0	0	0	0	1	4
08:00-09:00	182	53	27	4	14	1	0	4	1	23	76	385	180	24	24	3	17	0	0	5	0	30	101	384
12:00-13:00	114	98	39	0	13	1	2	3	0	8	29	307	152	93	40	3	14	0	0	5	0	19	20	346
17:00-18:00	194	115	14	3	1	1	0	5	0	30	102	465	178	86	14	2	2	0	1	5	1	26	65	380
21:00-22:00	54	43	3	0	0	0	0	3	1	3	16	123	98	53	3	0	0	0	0	3	0	9	33	199
TOTAL	544	309	83	7	31	3	2	15	2	64	224	1284	610	256	81	8	34	0	1	18	1	84	220	1313

Phase 3

SECTION 3												SECTION 3												
NORTHBOUND												SOUTHBOUND												
TIME	Car (Including Private Hire Vehicles)	Black Taxis	LGV - Freight (Vans etc)	LGV - Passenger (Minibuses etc)	MGV - Freight (2 Axles & 6 Tyres)	MGV - Passenger (2 Axles & 6 Tyres)	HGV Freight (3 Or More Axles)	Buses (Public Service - 9 Seats Or More)	Coaches (Private - 9 Seats Or More)	Motorcycles	Pedal Cycles	TOT	Car (Including Private Hire Vehicles)	Black Taxis	LGV - Freight (Vans etc)	LGV - Passenger (Minibuses etc)	MGV - Freight (2 Axles & 6 Tyres)	MGV - Passenger (2 Axles & 6 Tyres)	HGV Freight (3 Or More Axles)	Buses (Public Service - 9 Seats Or More)	Coaches (Private - 9 Seats Or More)	Motorcycles	Pedal Cycles	TOT
03:00-04:00	3	0	0	0	2	0	0	0	0	0	2	7	2	0	0	0	1	0	0	0	0	0	0	3
08:00-09:00	197	38	26	0	11	0	1	4	4	23	77	381	165	25	20	2	16	0	0	5	0	34	101	368
12:00-13:00	131	94	14	0	5	2	0	4	1	7	19	277	210	88	33	2	9	0	0	5	0	11	30	388
17:00-18:00	224	94	25	0	3	0	1	4	0	20	80	451	189	69	22	1	3	0	1	5	0	23	44	357
21:00-22:00	66	67	2	0	0	0	0	3	0	4	15	157	105	49	2	0	0	0	0	3	1	4	28	192
TOTAL	621	293	67	0	21	2	2	15	5	54	193	1273	671	231	77	5	29	0	1	18	1	72	203	1308

Phase 1

SECTION 4	NORTHBOUND											TOT	SOUTHBOUND											TOT
	Car (Including Private Hire Vehicles)	Black Taxis	LGV - Freight (Vans etc)	LGV - Passenger (Minibuses etc)	MGV - Freight (2 Axles & 6 Tyres)	MGV - Passenger (2 Axles & 6 Tyres)	HGV Freight (3 Or More Axles)	Buses (Public Service - 9 Seats Or More)	Coaches (Private - 9 Seats Or More)	Motorcycles	Pedal Cycles		Car (Including Private Hire Vehicles)	Black Taxis	LGV - Freight (Vans etc)	LGV - Passenger (Minibuses etc)	MGV - Freight (2 Axles & 6 Tyres)	MGV - Passenger (2 Axles & 6 Tyres)	HGV Freight (3 Or More Axles)	Buses (Public Service - 9 Seats Or More)	Coaches (Private - 9 Seats Or More)	Motorcycles	Pedal Cycles	
03:00-04:00	1	0	0	0	0	0	0	0	0	0	0	1	4	0	0	0	1	0	0	0	0	2	0	7
08:00-09:00	153	36	15	0	5	0	0	4	2	18	66	299	113	24	20	0	6	0	0	5	3	21	47	239
12:00-13:00	103	66	14	0	7	0	0	5	0	13	20	228	143	77	26	0	5	0	0	5	2	13	32	303
17:00-18:00	133	95	6	0	3	1	0	5	0	5	30	278	130	68	12	0	1	0	1	5	1	14	67	299
21:00-22:00	45	32	2	0	0	0	0	3	0	7	14	103	82	39	2	0	2	0	0	3	0	10	25	163
TOTAL	435	229	37	0	15	1	0	17	2	43	130	909	472	208	60	0	15	0	1	18	6	60	171	1011

Phase 2

SECTION 4	NORTHBOUND											TOT	SOUTHBOUND											TOT
	Car (Including Private Hire Vehicles)	Black Taxis	LGV - Freight (Vans etc)	LGV - Passenger (Minibuses etc)	MGV - Freight (2 Axles & 6 Tyres)	MGV - Passenger (2 Axles & 6 Tyres)	HGV Freight (3 Or More Axles)	Buses (Public Service - 9 Seats Or More)	Coaches (Private - 9 Seats Or More)	Motorcycles	Pedal Cycles		Car (Including Private Hire Vehicles)	Black Taxis	LGV - Freight (Vans etc)	LGV - Passenger (Minibuses etc)	MGV - Freight (2 Axles & 6 Tyres)	MGV - Passenger (2 Axles & 6 Tyres)	HGV Freight (3 Or More Axles)	Buses (Public Service - 9 Seats Or More)	Coaches (Private - 9 Seats Or More)	Motorcycles	Pedal Cycles	
03:00-04:00	0	0	0	0	3	0	0	0	0	0	1	4	4	0	0	0	0	0	0	0	0	0	0	4
08:00-09:00	186	41	19	3	11	1	0	4	1	28	103	397	155	21	24	3	13	0	0	5	0	16	63	300
12:00-13:00	106	98	29	0	8	1	1	4	0	8	31	286	135	84	33	3	14	0	1	5	0	21	33	329
17:00-18:00	158	91	8	1	1	1	0	5	0	14	58	337	172	73	13	1	2	0	0	5	1	28	103	398
21:00-22:00	42	47	2	0	0	0	0	3	1	1	16	112	95	57	2	0	1	0	0	2	0	8	35	200
TOTAL	492	277	58	4	23	3	1	16	2	51	209	1136	561	235	72	7	30	0	1	17	1	73	234	1231

Phase 3

SECTION 4	NORTHBOUND											TOT	SOUTHBOUND											TOT
	Car (Including Private Hire Vehicles)	Black Taxis	LGV - Freight (Vans etc)	LGV - Passenger (Minibuses etc)	MGV - Freight (2 Axles & 6 Tyres)	MGV - Passenger (2 Axles & 6 Tyres)	HGV Freight (3 Or More Axles)	Buses (Public Service - 9 Seats Or More)	Coaches (Private - 9 Seats Or More)	Motorcycles	Pedal Cycles		Car (Including Private Hire Vehicles)	Black Taxis	LGV - Freight (Vans etc)	LGV - Passenger (Minibuses etc)	MGV - Freight (2 Axles & 6 Tyres)	MGV - Passenger (2 Axles & 6 Tyres)	HGV Freight (3 Or More Axles)	Buses (Public Service - 9 Seats Or More)	Coaches (Private - 9 Seats Or More)	Motorcycles	Pedal Cycles	
03:00-04:00	3	0	0	0	2	0	0	0	0	0	0	5	1	0	0	0	1	0	0	0	0	0	1	3
08:00-09:00	203	41	23	2	4	0	0	5	1	22	102	403	145	25	16	3	9	0	0	5	0	30	63	296
12:00-13:00	118	82	11	0	4	0	1	5	0	6	20	247	192	73	30	2	8	0	1	5	0	10	16	337
17:00-18:00	173	91	16	1	1	0	0	4	0	14	44	344	177	66	18	1	1	0	0	5	0	18	54	340
21:00-22:00	59	66	3	0	0	0	0	3	0	4	10	145	109	43	2	1	0	0	0	2	1	7	32	197
TOTAL	556	280	53	3	11	0	1	17	1	46	176	1144	624	207	66	7	19	0	1	17	1	65	166	1173

Phase 1

SECTION 6	NORTHBOUND											TOT	SOUTHBOUND											TOT
	Car (Including Private Hire Vehicles)	Black Taxis	LGV - Freight (Vans etc)	LGV - Passenger (Minibuses etc)	MGV - Freight (2 A xles & 6 Tyres)	MGV - Passenger (2 A xles & 6 Tyres)	HGV Freight (3 Or More A xles)	Buses (Public Service - 9 Seats Or More)	Coaches (Private - 9 Seats Or More)	Motorcycles	Pedal Cycles		Car (Including Private Hire Vehicles)	Black Taxis	LGV - Freight (Vans etc)	LGV - Passenger (Minibuses etc)	MGV - Freight (2 A xles & 6 Tyres)	MGV - Passenger (2 A xles & 6 Tyres)	HGV Freight (3 Or More A xles)	Buses (Public Service - 9 Seats Or More)	Coaches (Private - 9 Seats Or More)	Motorcycles	Pedal Cycles	
03:00-04:00	1	0	0	0	0	0	0	0	0	0	0	1	2	0	0	0	1	0	0	0	0	0	0	3
08:00-09:00	142	36	13	0	5	0	0	4	1	15	52	268	92	19	13	0	4	0	0	5	0	15	42	190
12:00-13:00	96	66	14	0	6	0	0	5	0	10	15	212	117	51	22	0	4	0	0	5	0	12	23	234
17:00-18:00	127	94	6	0	2	1	0	5	0	4	20	259	113	32	10	0	0	0	5	0	10	68	238	
21:00-22:00	46	34	2	0	0	0	0	3	0	4	8	97	66	26	1	0	1	0	3	0	9	21	127	
TOTAL	412	230	35	0	13	1	0	17	1	33	95	837	390	128	46	0	10	0	18	0	46	154	792	

Phase 2

SECTION 6	NORTHBOUND											TOT	SOUTHBOUND											TOT
	Car (Including Private Hire Vehicles)	Black Taxis	LGV - Freight (Vans etc)	LGV - Passenger (Minibuses etc)	MGV - Freight (2 A xles & 6 Tyres)	MGV - Passenger (2 A xles & 6 Tyres)	HGV Freight (3 Or More A xles)	Buses (Public Service - 9 Seats Or More)	Coaches (Private - 9 Seats Or More)	Motorcycles	Pedal Cycles		Car (Including Private Hire Vehicles)	Black Taxis	LGV - Freight (Vans etc)	LGV - Passenger (Minibuses etc)	MGV - Freight (2 A xles & 6 Tyres)	MGV - Passenger (2 A xles & 6 Tyres)	HGV Freight (3 Or More A xles)	Buses (Public Service - 9 Seats Or More)	Coaches (Private - 9 Seats Or More)	Motorcycles	Pedal Cycles	
03:00-04:00	0	0	1	0	2	0	0	0	0	0	0	3	2	0	0	0	0	0	0	0	0	0	0	2
08:00-09:00	180	40	16	3	8	1	0	4	1	25	93	371	119	15	16	2	8	0	0	5	0	17	56	238
12:00-13:00	84	109	26	0	9	1	1	4	0	10	20	264	106	52	26	1	11	0	1	5	0	18	24	244
17:00-18:00	134	104	6	1	1	1	0	6	0	10	39	302	132	31	9	0	1	0	5	1	29	83	291	
21:00-22:00	32	53	2	0	0	0	0	3	0	1	10	101	72	23	2	0	0	0	2	0	10	33	142	
TOTAL	430	306	51	4	20	3	1	17	1	46	162	1041	431	121	53	3	20	0	1	17	1	74	196	917

Phase 3

SECTION 6	NORTHBOUND											TOT	SOUTHBOUND											TOT
	Car (Including Private Hire Vehicles)	Black Taxis	LGV - Freight (Vans etc)	LGV - Passenger (Minibuses etc)	MGV - Freight (2 A xles & 6 Tyres)	MGV - Passenger (2 A xles & 6 Tyres)	HGV Freight (3 Or More A xles)	Buses (Public Service - 9 Seats Or More)	Coaches (Private - 9 Seats Or More)	Motorcycles	Pedal Cycles		Car (Including Private Hire Vehicles)	Black Taxis	LGV - Freight (Vans etc)	LGV - Passenger (Minibuses etc)	MGV - Freight (2 A xles & 6 Tyres)	MGV - Passenger (2 A xles & 6 Tyres)	HGV Freight (3 Or More A xles)	Buses (Public Service - 9 Seats Or More)	Coaches (Private - 9 Seats Or More)	Motorcycles	Pedal Cycles	
03:00-04:00	0	2	0	0	2	0	0	0	0	0	0	4	1	0	0	0	0	0	0	0	0	1	2	2
08:00-09:00	198	39	24	2	3	1	0	4	2	22	69	364	118	19	13	1	4	0	0	5	0	27	51	238
12:00-13:00	115	83	10	0	4	0	1	4	1	6	14	238	153	42	18	2	4	0	1	5	0	8	11	244
17:00-18:00	159	88	16	1	1	0	0	4	0	11	28	308	141	43	10	1	1	0	5	0	15	46	262	
21:00-22:00	56	65	2	0	0	0	0	3	0	3	8	137	78	29	1	0	0	0	2	1	6	26	143	
TOTAL	528	277	52	3	10	1	1	15	3	42	119	1051	491	133	42	4	9	0	1	17	1	56	135	889

Phase 1

SECTION 7	NORTHBOUND											TOT	SOUTHBOUND											TOT
	Car (Including Private Hire Vehicles)	Black Taxis	LGV - Freight (Vans etc)	LGV - Passenger (Minibuses etc)	MGV - Freight (2 Axles & 6 Tyres)	MGV - Passenger (2 Axles & 6 Tyres)	HGV Freight (3 Or More Axles)	Buses (Public Service - 9 Seats Or More)	Coaches (Private - 9 Seats Or More)	Motorcycles	Pedal Cycles		Car (Including Private Hire Vehicles)	Black Taxis	LGV - Freight (Vans etc)	LGV - Passenger (Minibuses etc)	MGV - Freight (2 Axles & 6 Tyres)	MGV - Passenger (2 Axles & 6 Tyres)	HGV Freight (3 Or More Axles)	Buses (Public Service - 9 Seats Or More)	Coaches (Private - 9 Seats Or More)	Motorcycles	Pedal Cycles	
TIME																								
03:00-04:00	1	0	0	0	0	0	0	0	0	0	0	1	2	0	0	0	1	0	0	0	0	0	0	
08:00-09:00	3	0	0	0	0	0	0	0	0	0	8	11	30	0	7	0	5	0	0	0	0	1	16	
12:00-13:00	4	0	0	0	0	0	0	0	0	0	4	8	33	2	15	0	1	0	0	0	0	1	16	
17:00-18:00	1	1	0	0	0	0	0	0	0	0	0	2	18	2	5	0	2	0	0	0	0	1	23	
21:00-22:00	3	0	0	0	0	0	0	0	0	0	1	4	22	5	1	0	1	0	0	0	0	2	11	
TOTAL	12	1	0	0	0	0	0	0	0	0	13	26	105	9	28	0	10	0	0	0	0	5	66	

Phase 2

SECTION 7	NORTHBOUND											TOT	SOUTHBOUND											TOT
	Car (Including Private Hire Vehicles)	Black Taxis	LGV - Freight (Vans etc)	LGV - Passenger (Minibuses etc)	MGV - Freight (2 Axles & 6 Tyres)	MGV - Passenger (2 Axles & 6 Tyres)	HGV Freight (3 Or More Axles)	Buses (Public Service - 9 Seats Or More)	Coaches (Private - 9 Seats Or More)	Motorcycles	Pedal Cycles		Car (Including Private Hire Vehicles)	Black Taxis	LGV - Freight (Vans etc)	LGV - Passenger (Minibuses etc)	MGV - Freight (2 Axles & 6 Tyres)	MGV - Passenger (2 Axles & 6 Tyres)	HGV Freight (3 Or More Axles)	Buses (Public Service - 9 Seats Or More)	Coaches (Private - 9 Seats Or More)	Motorcycles	Pedal Cycles	
TIME																								
03:00-04:00	0	0	0	0	0	0	0	0	0	0	0	0	2	0	0	0	1	0	0	0	0	0	0	
08:00-09:00	1	0	1	0	0	0	0	0	0	0	10	12	34	1	16	0	8	0	0	0	0	1	19	
12:00-13:00	2	0	1	0	0	0	0	0	0	0	9	12	24	3	15	0	4	0	1	0	0	4	18	
17:00-18:00	0	1	0	0	0	0	0	0	0	0	8	9	37	2	5	0	2	0	0	0	0	2	29	
21:00-22:00	1	0	2	0	0	0	0	0	0	0	7	10	18	0	2	0	1	0	0	0	0	0	13	
TOTAL	4	1	4	0	0	0	0	0	0	0	34	43	115	6	38	0	16	0	1	0	0	7	79	

Phase 3

SECTION 7	NORTHBOUND											TOT	SOUTHBOUND											TOT
	Car (Including Private Hire Vehicles)	Black Taxis	LGV - Freight (Vans etc)	LGV - Passenger (Minibuses etc)	MGV - Freight (2 Axles & 6 Tyres)	MGV - Passenger (2 Axles & 6 Tyres)	HGV Freight (3 Or More Axles)	Buses (Public Service - 9 Seats Or More)	Coaches (Private - 9 Seats Or More)	Motorcycles	Pedal Cycles		Car (Including Private Hire Vehicles)	Black Taxis	LGV - Freight (Vans etc)	LGV - Passenger (Minibuses etc)	MGV - Freight (2 Axles & 6 Tyres)	MGV - Passenger (2 Axles & 6 Tyres)	HGV Freight (3 Or More Axles)	Buses (Public Service - 9 Seats Or More)	Coaches (Private - 9 Seats Or More)	Motorcycles	Pedal Cycles	
TIME																								
03:00-04:00	0	0	0	0	0	0	0	0	0	0	0	0	1	0	1	0	0	0	0	0	0	0	0	
08:00-09:00	1	0	0	0	0	0	0	0	0	0	5	6	26	1	12	0	3	0	0	0	0	4	17	
12:00-13:00	3	0	0	0	0	0	0	0	0	0	1	4	48	1	14	0	2	0	1	0	0	1	9	
17:00-18:00	0	0	0	0	0	0	0	0	0	0	3	3	35	1	3	0	3	0	0	0	0	1	17	
21:00-22:00	1	0	0	0	0	0	0	0	0	0	3	4	18	1	2	0	0	0	0	0	0	0	14	
TOTAL	5	0	0	0	0	0	0	0	0	0	12	17	128	4	32	0	8	0	1	0	0	6	57	

Phase 1

SECTION 8	EASTBOUND											WESTBOUND													
TIME	Car (Including Private Hire Vehicles)	Black Taxis	LGV - Freight (Vans etc)	LGV - Passenger (Minibuses etc)	MGV - Freight (2 Axles & 6 Tyres)	MGV - Passenger (2 Axles & 6 Tyres)	HGV Freight (3 Or More Axles)	Buses (Public Service - 9 Seats Or More)	Coaches (Private - 9 Seats Or More)	Motorcycles	Pedal Cycles	TOT	Car (Including Private Hire Vehicles)	Black Taxis	LGV - Freight (Vans etc)	LGV - Passenger (Minibuses etc)	MGV - Freight (2 Axles & 6 Tyres)	MGV - Passenger (2 Axles & 6 Tyres)	HGV Freight (3 Or More Axles)	Buses (Public Service - 9 Seats Or More)	Coaches (Private - 9 Seats Or More)	Motorcycles	Pedal Cycles	TOT	
03:00-04:00	0	0	0	1	0	0	0	0	0	0	0	1	1	0	0	0	0	0	0	0	0	0	0	0	2
08:00-09:00	0	0	0	0	0	0	0	0	0	0	5	5	0	0	0	0	0	0	0	0	0	0	0	5	5
12:00-13:00	4	0	1	0	0	0	0	0	0	0	10	15	3	0	1	0	0	0	0	0	0	0	0	23	27
17:00-18:00	1	1	4	0	1	0	0	0	0	0	10	17	2	1	2	0	1	0	0	0	0	0	0	18	24
21:00-22:00	0	1	1	0	1	0	0	0	0	0	5	8	0	1	1	0	1	0	0	0	0	0	0	9	12
TOTAL	5	2	6	1	2	0	0	0	0	0	30	46	6	2	4	0	3	0	0	0	0	0	0	55	70

Phase 2

SECTION 8	EASTBOUND											WESTBOUND													
TIME	Car (Including Private Hire Vehicles)	Black Taxis	LGV - Freight (Vans etc)	LGV - Passenger (Minibuses etc)	MGV - Freight (2 Axles & 6 Tyres)	MGV - Passenger (2 Axles & 6 Tyres)	HGV Freight (3 Or More Axles)	Buses (Public Service - 9 Seats Or More)	Coaches (Private - 9 Seats Or More)	Motorcycles	Pedal Cycles	TOT	Car (Including Private Hire Vehicles)	Black Taxis	LGV - Freight (Vans etc)	LGV - Passenger (Minibuses etc)	MGV - Freight (2 Axles & 6 Tyres)	MGV - Passenger (2 Axles & 6 Tyres)	HGV Freight (3 Or More Axles)	Buses (Public Service - 9 Seats Or More)	Coaches (Private - 9 Seats Or More)	Motorcycles	Pedal Cycles	TOT	
03:00-04:00	0	0	0	0	0	0	0	0	0	0	0	0	0	0	0	0	1	0	0	0	0	0	0	0	1
08:00-09:00	0	0	4	0	2	0	0	0	0	0	15	21	0	0	4	0	2	0	0	0	0	0	0	18	24
12:00-13:00	1	0	0	0	0	0	0	0	0	0	13	14	0	0	0	0	1	0	0	0	0	0	0	18	19
17:00-18:00	1	0	0	0	0	0	0	0	0	0	9	10	2	0	0	0	1	0	0	0	0	0	0	22	25
21:00-22:00	1	0	0	0	1	0	0	0	0	0	12	14	1	0	0	0	0	0	0	0	0	0	0	15	16
TOTAL	3	0	4	0	3	0	0	0	0	0	49	59	3	0	4	0	5	0	0	0	0	0	0	73	85

Phase 3

SECTION 8	NORTHBOUND											SOUTHBOUND													
TIME	Car (Including Private Hire Vehicles)	Black Taxis	LGV - Freight (Vans etc)	LGV - Passenger (Minibuses etc)	MGV - Freight (2 Axles & 6 Tyres)	MGV - Passenger (2 Axles & 6 Tyres)	HGV Freight (3 Or More Axles)	Buses (Public Service - 9 Seats Or More)	Coaches (Private - 9 Seats Or More)	Motorcycles	Pedal Cycles	TOT	Car (Including Private Hire Vehicles)	Black Taxis	LGV - Freight (Vans etc)	LGV - Passenger (Minibuses etc)	MGV - Freight (2 Axles & 6 Tyres)	MGV - Passenger (2 Axles & 6 Tyres)	HGV Freight (3 Or More Axles)	Buses (Public Service - 9 Seats Or More)	Coaches (Private - 9 Seats Or More)	Motorcycles	Pedal Cycles	TOT	
03:00-04:00	0	0	0	0	0	0	0	0	0	0	0	0	0	0	0	0	0	0	0	0	0	0	0	0	0
08:00-09:00	1	0	4	0	1	0	0	0	0	0	12	18	2	0	2	0	1	0	0	0	0	0	0	15	20
12:00-13:00	1	0	0	0	0	0	0	0	0	0	2	3	1	0	1	0	0	0	0	0	0	0	0	8	10
17:00-18:00	2	0	0	0	0	0	0	0	0	0	7	9	2	0	0	0	1	0	0	0	0	0	0	9	12
21:00-22:00	1	0	4	0	1	0	0	0	0	0	4	10	1	0	0	0	0	0	0	0	0	0	0	14	15
TOTAL	5	0	8	0	2	0	0	0	0	0	25	40	6	0	3	0	2	0	0	0	0	0	0	46	57

Appendix E – Vehicle 85th Percentile Speeds

Phase 1

Time	Section 1		Section 3		Section 4		Section 6		Section 7	
	Northbound	Southbound	Northbound	Southbound	Northbound	Southbound	Northbound	Southbound	Northbound	Southbound
00:00-01:00	27.9	28.8	30.1	28.3	25.8	25.2				16.6
01:00-02:00	28.9		26.6		26.2					
02:00-03:00	30.8									
03:00-04:00	28.1									
04:00-05:00										
05:00-06:00		29.6		31.8	29.6	25.5				18.8
06:00-07:00	29.6	30.6	30.7	28.6	29.2	26.6				19.8
07:00-08:00	30.4	29.8	30.7	27.8	29	24.6				18.4
08:00-09:00	29.4	26.5	26.2	24.8	25.3	23.6				19
09:00-10:00	26.8	25.6	25.1	23.4	24.8	20.4				17.7
10:00-11:00	26.9	25	25.1	21.6	23.1	19.6				19
11:00-12:00	26	25.5	24.4	20.8	21.4	17.4				19.9
12:00-13:00	25.7	26	24.3	22.8	21.6	18.9				19.6
13:00-14:00	25.1	25.7	23.9	21.4	20.6	13.9				19.2
14:00-15:00	25.4	26.2	23.4	23.2	20.8	18.1				17.7
15:00-16:00	25.3	26.4	23.1	20.9	21	18.6				16.7
16:00-17:00	24.3	26.7	24.7	22.4	20.4	17.9				19
17:00-18:00	23.5	26.3	24.6	22.1	22.7	18.5				17.2
18:00-19:00	24	26.2	26	24.1	23.4	20.5				16.6
19:00-20:00	25.9	26	25.5	23.7	23.1	18.2				18.9
20:00-21:00	25.9	26.8	27	25.3	24.2	19.2				18.5
21:00-22:00	27.7	27.3	29	26.6	26	21.5				18.3
22:00-23:00	27.9	27.8	27	26.9	24.8	20.8				18.9
23:00-24:00	25.6	29.4	29.9	29.3	26.1	22.4				18.7
Total:	25.9	26.5	25.6	24.2	23.8	20				18.7

Phase 2

Time	Section 1		Section 3		Section 4		Section 6		Section 7	
	Northbound	Southbound	Northbound	Southbound	Northbound	Southbound	Northbound	Southbound	Northbound	Southbound
00:00-01:00	29.1	27.6	28.9	28	25	24.1	13.5	24.1		
01:00-02:00	29.9		27.8		23.1		13.5			
02:00-03:00	30.3									
03:00-04:00	30.1									
04:00-05:00	29.5			29.3						
05:00-06:00	29.2	30.2	31.1	29.4	28.4	28.2	18.4	28.2		17.6
06:00-07:00	29.8	29.8	32.5	30.5	29.8	25.8	14.2	25.8		18.8
07:00-08:00	28.8	28.8	30.5	28.6	28.1	24.6	14	24.6		20.1
08:00-09:00	25.4	25	27.2	25.3	24.9	21.8	13.7	21.8		18.1
09:00-10:00	25.2	25.6	25.9	23.4	24.5	21.5	14.1	21.5		17.8
10:00-11:00	25.1	27.5	25.8	22.5	24.2	20.2	14.1	20.2		18.9
11:00-12:00	24.9	27.7	25.4	22.1	21.5	19.2	13.5	19.2		17.5
12:00-13:00	23.8	25.3	24.6	22.6	20.9	14.8	13.4	14.8		16.6
13:00-14:00	25.2	25.9	25	21.5	21.5	16.9	14.3	16.9		14.7
14:00-15:00	24.8	25.5	25.3	23.5	22.7	16.8	13.5	16.8		15.8
15:00-16:00	25.3	25.5	23.9	21.1	20.5	13.9	13.6	13.9		15.4
16:00-17:00	24.1	25.5	23.6	22.2	19.9	14.2	13.4	14.2		17.5
17:00-18:00	24.4	25.3	24.3	23.3	20.3	16.7	12.6	16.7		15.3
18:00-19:00	25.1	24.6	25.4	22.5	21.9	15.6	13.4	15.6		17.5
19:00-20:00	25.4	25.9	27.4	25.8	24.4	20.7	14	20.7		16.3
20:00-21:00	26	28	28.1	28	25.4	22.3	14	22.3		17.5
21:00-22:00	25.9	28	28.4	28.7	25	21.9	14	21.9		21.8
22:00-23:00	27.4	28.8	27.9	27.9	24.8	20.9	14.4	20.9		16
23:00-24:00	27	29.6	29.9	28.8	26.8	25.1	14.3	25.1		19.1
Total:	25.5	26.3	25.9	24.7	23.8	20.3	13.8	20.3		17.7

Phase 3

Time	Section 1		Section 3		Section 4		Section 6		Section 7	
	Northbound	Southbound	Northbound	Southbound	Northbound	Southbound	Northbound	Southbound	Northbound	Southbound
00:00-01:00	34.8	27.4	29.5	27.8	29.8	33.7	14	22.3		
01:00-02:00		26	30.6	29.1						
02:00-03:00										
03:00-04:00										
04:00-05:00	27.7			27.4	26	29.3				
05:00-06:00	31.2	30.2	34.9	30.5	30.6	33.6	15.9	23.7		13
06:00-07:00	30	29.6	33.8	29.6	30.4	33.1	15	22.7		14.9
07:00-08:00	27.9	27.6	29.2	27.9	26	28.2	14.6	20.8		14.1
08:00-09:00	25.3	25.6	27.7	24.9	25	27.8	14	19.5		15.9
09:00-10:00	24.1	23.5	24.6	21.5	23.8	25.7	14.6	20.1		15.6
10:00-11:00	24.5	24.2	25.4	22.7	23.8	25.3	14.2	19.8		15.4
11:00-12:00	24.2	22	24.7	23.1	23.2	24.7	14.3	20.1		15.4
12:00-13:00	24.2	23.1	24.9	24.3	21.6	23.8	13.8	20.2		15.3
13:00-14:00	24.1	23	24.2	20.9	22.5	24.7	13.8	19.5		14.3
14:00-15:00	24.7	23.8	24.1	22.5	24	25.4	13.9	19.3		12.8
15:00-16:00	24.3	24.6	24.8	23.6	22.1	25	14.1	19.1		14.7
16:00-17:00	24	21.9	24.2	22.5	24.1	25.9	13.8	17.1		15.8
17:00-18:00	24.8	23.5	23.9	22.9	23.5	24.7	13.6	15.9		12.7
18:00-19:00	25.2	25.1	25.5	23.9	24.5	25.4	14.3	19.3		15.7
19:00-20:00	25.1	25.6	26.7	24.9	25.4	26.6	14.3	19		16.7
20:00-21:00	25.6	26	26.9	25.3	26.4	29.5	15.3	19.6		16.2
21:00-22:00	25.8	25.6	27.8	25.8	25.9	29.2	15.1	20.5		13.8
22:00-23:00	26.4	26.6	29.2	28.4	27.4	27.9	14.7	20.4		15.7
23:00-24:00	27.7	28.3	29.8	29	28.2	29.5	15.8	20.9		17.1
Total:	25.2	24.9	25.7	24.5	24.8	26.2	14.4	19.8		15.3

Appendix F – Vehicles Stopping Abruptly

Phase 1

Section 1			
TIME	Number Of Motorised Vehicles Stopping Abruptly	Number Of Pedestrians Stopping Abruptly	Number Of Bicycles Stopping Abruptly
03:00-04:00	0	0	0
08:00-09:00	0	0	0
12:00-13:00	0	0	0
17:00-18:00	0	0	0
21:00-22:00	0	0	0
Whole Day	1	0	0

Section 6			
TIME	Number Of Motorised Vehicles Stopping Abruptly	Number Of Pedestrians Stopping Abruptly	Number Of Bicycles Stopping Abruptly
03:00-04:00	0	0	0
08:00-09:00	0	0	0
12:00-13:00	1	0	0
17:00-18:00	0	0	0
21:00-22:00	0	0	0
Whole Day	1	2	0

Section 3			
TIME	Number Of Motorised Vehicles Stopping Abruptly	Number Of Pedestrians Stopping Abruptly	Number Of Bicycles Stopping Abruptly
03:00-04:00	0	0	0
08:00-09:00	0	0	0
12:00-13:00	0	0	0
17:00-18:00	0	0	0
21:00-22:00	0	0	0
Whole Day	2	4	0

Section 7			
TIME	Number Of Motorised Vehicles Stopping Abruptly	Number Of Pedestrians Stopping Abruptly	Number Of Bicycles Stopping Abruptly
03:00-04:00	0	0	0
08:00-09:00	0	0	0
12:00-13:00	0	0	0
17:00-18:00	0	0	0
21:00-22:00	0	0	0
Whole Day	0	0	0

Section 4			
TIME	Number Of Motorised Vehicles Stopping Abruptly	Number Of Pedestrians Stopping Abruptly	Number Of Bicycles Stopping Abruptly
03:00-04:00	0	0	0
08:00-09:00	0	0	0
12:00-13:00	0	0	0
17:00-18:00	0	0	0
21:00-22:00	0	0	0
Whole Day	0	0	0

Section 8			
TIME	Number Of Motorised Vehicles Stopping Abruptly	Number Of Pedestrians Stopping Abruptly	Number Of Bicycles Stopping Abruptly
03:00-04:00	0	0	0
08:00-09:00	0	0	0
12:00-13:00	0	0	0
17:00-18:00	0	0	0
21:00-22:00	0	0	0
Whole Day	0	0	0

Phase 2

Section 1			
TIME	Number Of Motorised Vehicles Stopping Abruptly	Number Of Pedestrians Stopping Abruptly	Number Of Bicycles Stopping Abruptly
03:00-04:00	0	0	0
08:00-09:00	0	0	0
12:00-13:00	0	0	0
17:00-18:00	0	0	0
21:00-22:00	0	0	0

Section 6			
TIME	Number Of Motorised Vehicles Stopping Abruptly	Number Of Pedestrians Stopping Abruptly	Number Of Bicycles Stopping Abruptly
03:00-04:00	0	0	0
08:00-09:00	0	0	0
12:00-13:00	0	0	0
17:00-18:00	0	0	0
21:00-22:00	0	0	0

Section 3			
TIME	Number Of Motorised Vehicles Stopping Abruptly	Number Of Pedestrians Stopping Abruptly	Number Of Bicycles Stopping Abruptly
03:00-04:00	0	0	0
08:00-09:00	0	0	0
12:00-13:00	0	0	0
17:00-18:00	0	0	0
21:00-22:00	0	0	0

Section 7			
TIME	Number Of Motorised Vehicles Stopping Abruptly	Number Of Pedestrians Stopping Abruptly	Number Of Bicycles Stopping Abruptly
03:00-04:00	0	0	0
08:00-09:00	0	0	0
12:00-13:00	0	0	0
17:00-18:00	2	0	0
21:00-22:00	0	0	0

Section 4			
TIME	Number Of Motorised Vehicles Stopping Abruptly	Number Of Pedestrians Stopping Abruptly	Number Of Bicycles Stopping Abruptly
03:00-04:00	0	0	0
08:00-09:00	0	0	0
12:00-13:00	0	0	0
17:00-18:00	0	0	0
21:00-22:00	0	0	0

Section 8			
TIME	Number Of Motorised Vehicles Stopping Abruptly	Number Of Pedestrians Stopping Abruptly	Number Of Bicycles Stopping Abruptly
03:00-04:00	0	0	0
08:00-09:00	0	0	0
12:00-13:00	0	0	0
17:00-18:00	0	0	0
21:00-22:00	0	0	0

Phase 3

Section 1			
TIME	Number Of Motorised Vehicles Stopping Abruptly	Number Of Pedestrians Stopping Abruptly	Number Of Bicycles Stopping Abruptly
03:00-04:00	0	0	0
08:00-09:00	0	0	0
12:00-13:00	0	0	0
17:00-18:00	0	0	0
21:00-22:00	0	0	0

Section 6			
TIME	Number Of Motorised Vehicles Stopping Abruptly	Number Of Pedestrians Stopping Abruptly	Number Of Bicycles Stopping Abruptly
03:00-04:00	0	0	0
08:00-09:00	0	0	0
12:00-13:00	0	0	0
17:00-18:00	0	0	0
21:00-22:00	0	0	0

Section 3			
TIME	Number Of Motorised Vehicles Stopping Abruptly	Number Of Pedestrians Stopping Abruptly	Number Of Bicycles Stopping Abruptly
03:00-04:00	0	0	0
08:00-09:00	0	0	0
12:00-13:00	0	0	0
17:00-18:00	0	0	0
21:00-22:00	0	0	0

Section 7			
TIME	Number Of Motorised Vehicles Stopping Abruptly	Number Of Pedestrians Stopping Abruptly	Number Of Bicycles Stopping Abruptly
03:00-04:00	0	0	0
08:00-09:00	0	0	0
12:00-13:00	0	0	0
17:00-18:00	0	0	0
21:00-22:00	0	0	0

Section 4			
TIME	Number Of Motorised Vehicles Stopping Abruptly	Number Of Pedestrians Stopping Abruptly	Number Of Bicycles Stopping Abruptly
03:00-04:00	0	0	0
08:00-09:00	0	0	0
12:00-13:00	0	0	0
17:00-18:00	0	0	0
21:00-22:00	0	0	0

Section 8			
TIME	Number Of Motorised Vehicles Stopping Abruptly	Number Of Pedestrians Stopping Abruptly	Number Of Bicycles Stopping Abruptly
03:00-04:00	0	0	0
08:00-09:00	0	0	0
12:00-13:00	0	0	0
17:00-18:00	0	0	0
21:00-22:00	0	0	0

Appendix G - Accidents

No accidents were recorded in any of the three phases.

Appendix H – Parking Occupancy

Phase 1

Section 1		
Number of Vehicles Parking without Loading or Unloading, and Stationary for Longer than Five Minutes in:		
Time	Designated Diplomatic Bays	Designated Residential Bays
03:00-04:00	3	7
08:00-09:00	3	6
12:00-13:00	3	8
17:00-18:00	1	9
21:00-22:00	0	8
Total	10	38

Section 3	
Number of Vehicles Parking without Loading or Unloading, and Stationary for Longer than Five Minutes in:	
Time	Designated Residential Bays
03:00-04:00	7
08:00-09:00	8
12:00-13:00	9
17:00-18:00	9
21:00-22:00	6
Total	39

Section 4		
Number of Vehicles Parking without Loading or Unloading, and Stationary for Longer than Five Minutes in:		
Time	Designated Disabled Bays	Designated Residential Bays
03:00-04:00	0	12
08:00-09:00	0	12
12:00-13:00	0	15
17:00-18:00	0	18
21:00-22:00	0	11
Total	0	68

Section 6	
Number of Vehicles Parking without Loading or Unloading, and Stationary for Longer than Five Minutes in:	
Time	Designated Diplomatic Bays
03:00-04:00	0
08:00-09:00	0
12:00-13:00	1
17:00-18:00	1
21:00-22:00	0
Total	2

Phase 2

Section 1		
Number of Vehicles Parking without Loading or Unloading, and Stationary for Longer than Five Minutes in:		
Time	Designated Diplomatic Bays	Designated Residential Bays
03:00-04:00	1	4
08:00-09:00	1	5
12:00-13:00	2	9
17:00-18:00	2	5
21:00-22:00	2	5
Total	8	28

Section 3	
Number of Vehicles Parking without Loading or Unloading, and Stationary for Longer than Five Minutes in:	
Time	Designated Residential Bays
03:00-04:00	11
08:00-09:00	8
12:00-13:00	7
17:00-18:00	10
21:00-22:00	11
Total	47

Section 4		
Number of Vehicles Parking without Loading or Unloading, and Stationary for Longer than Five Minutes in:		
Time	Designated Disabled Bays	Designated Residential Bays
03:00-04:00	0	12
08:00-09:00	0	14
12:00-13:00	0	17
17:00-18:00	0	18
21:00-22:00	0	11
Total	0	72

Section 6	
Number of Vehicles Parking without Loading or Unloading, and Stationary for Longer than Five Minutes in:	
Time	Designated Diplomatic Bays
03:00-04:00	0
08:00-09:00	0
12:00-13:00	2
17:00-18:00	2
21:00-22:00	2
Total	6

Phase 3

Section 1		
Number of Vehicles Parking without Loading or Unloading, and Stationary for Longer than Five Minutes in:		
Time	Designated Diplomatic Bays	Designated Residential Bays
03:00-04:00	2	10
08:00-09:00	2	10
12:00-13:00	2	13
17:00-18:00	2	9
21:00-22:00	2	9
Total	10	51

Section 3	
Number of Vehicles Parking without Loading or Unloading, and Stationary for Longer than Five Minutes in:	
Time	Designated Residential Bays
03:00-04:00	10
08:00-09:00	8
12:00-13:00	13
17:00-18:00	12
21:00-22:00	10
Total	53

Section 4		
Number of Vehicles Parking without Loading or Unloading, and Stationary for Longer than Five Minutes in:		
Time	Designated Disabled Bays	Designated Residential Bays
03:00-04:00	0	9
08:00-09:00	0	11
12:00-13:00	2	17
17:00-18:00	0	17
21:00-22:00	0	11
Total	2	65

Section 6	
Number of Vehicles Parking without Loading or Unloading, and Stationary for Longer than Five Minutes in:	
Time	Designated Diplomatic Bays
03:00-04:00	0
08:00-09:00	0
12:00-13:00	0
17:00-18:00	1
21:00-22:00	1
Total	2

Appendix I – Illegal Vehicle Movements

Phase 1

TIME	Section 1						TOT
	East Side Of Road: Vehicles Driving In Any Direction Safe Pedestrian Zone	West Side Of Road: Vehicles Driving In Any Direction In Safe Pedestrian Zone	Number Of Vehicles Driving The Wrong Way Southbound Down Exhibition Road	Number Of Vehicles Driving The Wrong Way Northbound Down Exhibition Road	Safe Zone	Wrong way	
03:00-04:00	1	0	0	0	1	0	1
08:00-09:00	2	8	0	0	10	0	10
12:00-13:00	12	5	0	1	17	1	18
17:00-18:00	2	6	1	0	8	1	9
21:00-22:00	0	3	1	0	3	1	4
TOTAL	17	22	2	1	39	3	42

Phase 2

TIME	Section 1						TOT
	East Side Of Road: Vehicles Driving In Any Direction Safe Pedestrian Zone	West Side Of Road: Vehicles Driving In Any Direction In Safe Pedestrian Zone	Number Of Vehicles Driving The Wrong Way Southbound Down Exhibition Road	Number Of Vehicles Driving The Wrong Way Northbound Down Exhibition Road	Safe Zone	Wrong way	
03:00-04:00	0	0	0	1	0	1	1
08:00-09:00	6	20	2	1	26	3	29
12:00-13:00	0	4	0	0	4	0	4
17:00-18:00	1	3	0	1	4	1	5
21:00-22:00	2	2	0	2	4	2	6
TOTAL	9	29	2	5	38	7	45

Phase 3

TIME	Section 1						TOT
	East Side Of Road: Vehicles Driving In Any Direction Safe Pedestrian Zone	West Side Of Road: Vehicles Driving In Any Direction In Safe Pedestrian Zone	Number Of Vehicles Driving The Wrong Way Southbound Down Exhibition Road	Number Of Vehicles Driving The Wrong Way Northbound Down Exhibition Road	Safe Zone	Wrong way	
03:00-04:00	0	1	0	0	1	0	1
08:00-09:00	10	5	1	1	15	2	17
12:00-13:00	18	9	0	1	27	1	28
17:00-18:00	4	6	0	1	10	1	11
21:00-22:00	5	7	0	0	12	0	12
TOTAL	37	28	1	3	65	4	69

Phase 1

TIME	Section 3						TOT
	East Side Of Road: Vehicles Driving In Any Direction Safe Pedestrian Zone	West Side Of Road: Vehicles Driving In Any Direction In Safe Pedestrian Zone	Number Of Vehicles Driving The Wrong Way Southbound Down Exhibition Road	Number Of Vehicles Driving The Wrong Way Northbound Down Exhibition Road	Safe Zone	Wrong way	
03:00-04:00	3	0	0	0	3	0	3
08:00-09:00	6	0	2	2	6	4	10
12:00-13:00	7	2	0	4	9	4	13
17:00-18:00	14	3	0	4	17	4	21
21:00-22:00	4	0	0	3	4	3	7
TOTAL	34	5	2	13	39	15	54

Phase 2

TIME	Section 3						TOT
	East Side Of Road: Vehicles Driving In Any Direction Safe Pedestrian Zone	West Side Of Road: Vehicles Driving In Any Direction In Safe Pedestrian Zone	Number Of Vehicles Driving The Wrong Way Southbound Down Exhibition Road	Number Of Vehicles Driving The Wrong Way Northbound Down Exhibition Road	Safe Zone	Wrong way	
03:00-04:00	2	0	0	1	2	1	3
08:00-09:00	24	1	7	6	25	13	38
12:00-13:00	15	6	8	0	21	8	29
17:00-18:00	16	2	5	6	18	11	29
21:00-22:00	12	1	3	9	13	12	25
TOTAL	69	10	23	22	79	45	124

Phase 3

TIME	Section 3						TOT
	East Side Of Road: Vehicles Driving In Any Direction Safe Pedestrian Zone	West Side Of Road: Vehicles Driving In Any Direction In Safe Pedestrian Zone	Number Of Vehicles Driving The Wrong Way Southbound Down Exhibition Road	Number Of Vehicles Driving The Wrong Way Northbound Down Exhibition Road	Safe Zone	Wrong way	
03:00-04:00	1	0	0	4	1	4	5
08:00-09:00	11	4	4	10	15	14	29
12:00-13:00	7	14	3	17	21	20	41
17:00-18:00	12	4	4	4	16	8	24
21:00-22:00	7	4	5	5	11	10	21
TOTAL	38	26	16	40	64	56	120

Phase 1

TIME	Section 4						TOT
	East Side Of Road: Vehicles Driving In Any Direction Safe Pedestrian Zone	West Side Of Road: Vehicles Driving In Any Direction In Safe Pedestrian Zone	Number Of Vehicles Driving The Wrong Way Southbound Down Exhibition Road	Number Of Vehicles Driving The Wrong Way Northbound Down Exhibition Road	Safe Zone	Wrong way	
03:00-04:00	0	0	0	0	0	0	0
08:00-09:00	7	6	4	12	13	16	29
12:00-13:00	6	0	12	1	6	13	19
17:00-18:00	7	0	2	4	7	6	13
21:00-22:00	2	3	3	2	5	5	10
TOTAL	22	9	21	19	31	40	71

Phase 2

TIME	Section 4						TOT
	East Side Of Road: Vehicles Driving In Any Direction Safe Pedestrian Zone	West Side Of Road: Vehicles Driving In Any Direction In Safe Pedestrian Zone	Number Of Vehicles Driving The Wrong Way Southbound Down Exhibition Road	Number Of Vehicles Driving The Wrong Way Northbound Down Exhibition Road	Safe Zone	Wrong way	
03:00-04:00	0	0	0	0	0	0	0
08:00-09:00	5	5	4	6	10	10	20
12:00-13:00	5	3	19	3	8	22	30
17:00-18:00	17	3	13	10	20	23	43
21:00-22:00	4	6	7	3	10	10	20
TOTAL	31	17	43	22	48	65	113

Phase 3

TIME	Section 4						TOT
	East Side Of Road: Vehicles Driving In Any Direction Safe Pedestrian Zone	West Side Of Road: Vehicles Driving In Any Direction In Safe Pedestrian Zone	Number Of Vehicles Driving The Wrong Way Southbound Down Exhibition Road	Number Of Vehicles Driving The Wrong Way Northbound Down Exhibition Road	Safe Zone	Wrong way	
03:00-04:00	0	0	0	0	0	0	0
08:00-09:00	11	4	3	16	15	19	34
12:00-13:00	20	2	0	15	22	15	37
17:00-18:00	15	7	6	17	22	23	45
21:00-22:00	4	11	4	3	15	7	22
TOTAL	50	24	13	51	74	64	138

Phase 1

TIME	Section 6						TOT
	East Side Of Road: Vehicles Driving In Any Direction Safe Pedestrian Zone	West Side Of Road: Vehicles Driving In Any Direction In Safe Pedestrian Zone	Number Of Vehicles Driving The Wrong Way Southbound Down Exhibition Road	Number Of Vehicles Driving The Wrong Way Northbound Down Exhibition Road	Safe Zone	Wrong way	
03:00-04:00	0	0	0	0	0	0	0
08:00-09:00	2	0	1	7	2	8	10
12:00-13:00	1	3	2	1	4	3	7
17:00-18:00	3	5	0	2	8	2	10
21:00-22:00	0	4	1	3	4	4	8
TOTAL	6	12	4	13	18	17	35

Phase 2

TIME	Section 6						TOT
	East Side Of Road: Vehicles Driving In Any Direction Safe Pedestrian Zone	West Side Of Road: Vehicles Driving In Any Direction In Safe Pedestrian Zone	Number Of Vehicles Driving The Wrong Way Southbound Down Exhibition Road	Number Of Vehicles Driving The Wrong Way Northbound Down Exhibition Road	Safe Zone	Wrong way	
03:00-04:00	0	0	0	0	0	0	0
08:00-09:00	4	2	2	7	6	9	15
12:00-13:00	1	2	1	4	3	5	8
17:00-18:00	3	0	0	1	3	1	4
21:00-22:00	0	1	4	2	1	6	7
TOTAL	8	5	7	14	13	21	34

Phase 3

TIME	Section 6						TOT
	East Side Of Road: Vehicles Driving In Any Direction Safe Pedestrian Zone	West Side Of Road: Vehicles Driving In Any Direction In Safe Pedestrian Zone	Number Of Vehicles Driving The Wrong Way Southbound Down Exhibition Road	Number Of Vehicles Driving The Wrong Way Northbound Down Exhibition Road	Safe Zone	Wrong way	
03:00-04:00	0	0	0	0	0	0	0
08:00-09:00	0	2	2	13	2	15	17
12:00-13:00	1	0	1	4	1	5	6
17:00-18:00	2	1	2	0	3	2	5
21:00-22:00	0	4	3	2	4	5	9
TOTAL	3	7	8	19	10	27	37

Phase 1

TIME	Section 7						TOT
	East Side Of Road: Vehicles Driving In Any Direction Safe Pedestrian Zone	West Side Of Road: Vehicles Driving In Any Direction In Safe Pedestrian Zone	Number Of Vehicles Driving The Wrong Way Southbound Down Exhibition Road	Number Of Vehicles Driving The Wrong Way Northbound Down Exhibition Road	Safe Zone	Wrong way	
03:00-04:00	0	0	0	1	0	1	1
08:00-09:00	2	1	0	4	3	4	7
12:00-13:00	10	1	0	1	11	1	12
17:00-18:00	10	2	0	1	12	1	13
21:00-22:00	4	3	0	1	7	1	8
TOTAL	26	7	0	8	33	8	41

Phase 2

TIME	Section 7						TOT
	East Side Of Road: Vehicles Driving In Any Direction Safe Pedestrian Zone	West Side Of Road: Vehicles Driving In Any Direction In Safe Pedestrian Zone	Number Of Vehicles Driving The Wrong Way Southbound Down Exhibition Road	Number Of Vehicles Driving The Wrong Way Northbound Down Exhibition Road	Safe Zone	Wrong way	
03:00-04:00	0	0	0	0	0	0	0
08:00-09:00	6	12	5	2	18	7	25
12:00-13:00	2	10	4	6	12	10	22
17:00-18:00	3	9	7	2	12	9	21
21:00-22:00	10	1	2	7	11	9	20
TOTAL	21	32	18	17	53	35	88

Phase 3

TIME	Section 7						TOT
	East Side Of Road: Vehicles Driving In Any Direction Safe Pedestrian Zone	West Side Of Road: Vehicles Driving In Any Direction In Safe Pedestrian Zone	Number Of Vehicles Driving The Wrong Way Southbound Down Exhibition Road	Number Of Vehicles Driving The Wrong Way Northbound Down Exhibition Road	Safe Zone	Wrong way	
03:00-04:00	0	3	0	0	3	0	3
08:00-09:00	4	7	3	17	11	20	31
12:00-13:00	1	6	1	10	7	11	18
17:00-18:00	5	3	4	17	8	21	29
21:00-22:00	1	7	5	8	8	13	21
TOTAL	11	26	13	52	37	65	102

Phase 1

TIME	Section 8						TOT
	East Side Of Road: Vehicles Driving In Any Direction Safe Pedestrian Zone	West Side Of Road: Vehicles Driving In Any Direction In Safe Pedestrian Zone	Number Of Vehicles Driving The Wrong Way Southbound Down Exhibition Road	Number Of Vehicles Driving The Wrong Way Northbound Down Exhibition Road	Safe Zone	Wrong way	
03:00-04:00	0	0	0	2	0	2	2
08:00-09:00	6	0	1	0	6	1	7
12:00-13:00	4	0	1	2	4	3	7
17:00-18:00	5	0	2	1	5	3	8
21:00-22:00	2	0	2	3	2	5	7
TOTAL	17	0	6	8	17	14	31

Phase 2

TIME	Section 8						TOT
	East Side Of Road: Vehicles Driving In Any Direction Safe Pedestrian Zone	West Side Of Road: Vehicles Driving In Any Direction In Safe Pedestrian Zone	Number Of Vehicles Driving The Wrong Way Southbound Down Exhibition Road	Number Of Vehicles Driving The Wrong Way Northbound Down Exhibition Road	Safe Zone	Wrong way	
03:00-04:00	0	0	0	0	0	0	0
08:00-09:00	12	7	3	4	19	7	26
12:00-13:00	4	4	1	0	8	1	9
17:00-18:00	11	0	2	1	11	3	14
21:00-22:00	8	10	1	1	18	2	20
TOTAL	35	21	7	6	56	13	69

Phase 3

TIME	Section 8						TOT
	East Side Of Road: Vehicles Driving In Any Direction Safe Pedestrian Zone	West Side Of Road: Vehicles Driving In Any Direction In Safe Pedestrian Zone	Number Of Vehicles Driving The Wrong Way Southbound Down Exhibition Road	Number Of Vehicles Driving The Wrong Way Northbound Down Exhibition Road	Safe Zone	Wrong way	
03:00-04:00	0	0	0	0	0	0	0
08:00-09:00	4	4	1	3	8	4	12
12:00-13:00	2	2	0	1	4	1	5
17:00-18:00	0	4	1	1	4	2	6
21:00-22:00	0	2	1	0	2	1	3
TOTAL	6	12	3	5	18	8	26

Appendix J – Bus Stop Behaviour

Day Light

Phase 1

BUS STOP	BUS ROUTE	ARRIVAL TIME	NUMBER BOARDING	NUMBER ALIGHTING
K	360	17:10	Did not stop	Did not stop
K	360	17:22	0	0
K	360	17:35	1	0
K	360	17:49	Did not stop	Did not stop
K	360	18:01	0	2

Incidents of Tripping: 0

Night Time

Phase 1

BUS STOP	BUS ROUTE	ARRIVAL TIME	NUMBER BOARDING	NUMBER ALIGHTING
K	360	22:03	2	1
K	360	22:23	Did not stop	Did not stop
K	360	22:45	Did not stop	Did not stop

Incidents of Tripping: 0

Day Light

Phase 1

BUS STOP	BUS ROUTE	ARRIVAL TIME	NUMBER BOARDING	NUMBER ALIGHTING
L	360	17:08	3	0
L	360	17:21	3	0
L	360	17:30	8	0
L	360	17:44	12	0
L	360	17:53	2	0

Incidents of Tripping: one able bodied adult at 17:01

Night Time

Phase 1

BUS STOP	BUS ROUTE	ARRIVAL TIME	NUMBER BOARDING	NUMBER ALIGHTING
L	360	22:20	0	0

Incidents of Tripping: 0

Phase 2

BUS STOP	BUS ROUTE	ARRIVAL TIME	NUMBER ALIGHTING	NUMBER BOARDING
K	360	12:00	0	2
K	360	12:14	0	1
K	360	12:25	0	2
K	360	12:38	Did not stop	Did not stop
K	360	12:48	0	3

Incidents of Tripping: 0

Phase 2

BUS STOP	BUS ROUTE	ARRIVAL TIME	NUMBER ALIGHTING	NUMBER BOARDING
K	360	17:02	0	0
K	360	17:14	Did not stop	Did not stop
K	360	17:24	0	1
K	360	17:37	Did not stop	Did not stop
K	360	17:57	Did not stop	Did not stop

Incidents of Tripping: 0

Phase 2

BUS STOP	BUS ROUTE	ARRIVAL TIME	NUMBER ALIGHTING	NUMBER BOARDING
L	360	12:06	0	1
L	360	12:17	0	0
L	360	12:31	3	0
L	360	12:44	2	0
L	360	12:55	2	0

Incidents of Tripping: 0

Phase 2

BUS STOP	BUS ROUTE	ARRIVAL TIME	NUMBER ALIGHTING	NUMBER BOARDING
L	360	16:56	Did not stop	Did not stop
L	360	17:07	2	0
L	360	17:18	Did not stop	Did not stop
L	360	17:31	0	0
L	360	17:42	4	0
L	360	17:53	3	0

Incidents of Tripping: 0

Phase 3

BUS STOP	BUS ROUTE	ARRIVAL TIME	NUMBER ALIGHTING	NUMBER BOARDING
K	360	17:02	0	2
K	360	17:13	0	0
K	360	17:27	2	0
K	360	17:39	0	1
K	360	17:56	0	6

Incidents of Tripping: 0

Phase 3

BUS STOP	BUS ROUTE	ARRIVAL TIME	NUMBER ALIGHTING	NUMBER BOARDING
K	360	21:04	0	0
K	360	21:25	0	0
K	360	21:44	0	1

Incidents of Tripping: 0

Phase 3

BUS STOP	BUS ROUTE	ARRIVAL TIME	NUMBER ALIGHTING	NUMBER BOARDING
L	360	17:08	1	0
L	360	17:19	12	0
L	360	17:30	4	0
L	360	17:43	1	0
L	360	17:57	7	0

Incidents of Tripping: 0

Phase 3

BUS STOP	BUS ROUTE	ARRIVAL TIME	NUMBER ALIGHTING	NUMBER BOARDING
L	360	21:18	0	0
L	360	21:38	0	0
L	360	21:58	1	0

Incidents of Tripping: 0

MVA Consultancy provides advice on transport, to central, regional and local government, agencies, developers, operators and financiers.

A diverse group of results-oriented people, we are part of a strong team of professionals worldwide. Through client business planning, customer research and strategy development we create solutions that work for real people in the real world.

For more information visit www.mvaconsultancy.com

Abu Dhabi

AS Business Centre, First Floor, Suites 201-213,
Al Ain Road, Umm al Nar, P.O. Box 129865,
Abu Dhabi, UAE
T: +971 2 558 3809 F: +971 2 558 9961

Birmingham

Second Floor, 37a Waterloo Street
Birmingham B2 5TJ United Kingdom
T: +44 (0)121 233 7680 F: +44 (0)121 233 7681

Dublin

1st Floor, 12/13 Exchange Place,
Custom House Docks, IFSC, Dublin 1 Ireland
T: +353 (0)1 542 6000 F: +353 (0)1 542 6001

Edinburgh

Prospect House, 5 Thistle Street, Edinburgh EH2 1DF
United Kingdom
T: +44 (0)131 220 6966

Glasgow

Seventh Floor, 78 St Vincent Street
Glasgow G2 5UB United Kingdom
T: +44 (0)141 225 4400

Lille

86 Boulevard Carnot, 59000 Lille, France
T: +33 (0)3 74 07 00 F: +33 (0)1 53 17 36 01

London

Seventh Floor, 15 Old Bailey
London EC4M 7EF United Kingdom
T: +44 (0)20 7529 6500 F: +44 (0)20 3427 6274

Lyon

11, rue de la République, 69001 Lyon, France
T: +33 (0)4 72 10 29 29 F: +33 (0)4 72 10 29 28

Manchester

25th Floor, City Tower, Piccadilly Plaza
Manchester M1 4BT United Kingdom
T: +44 (0)161 236 0282 F: +44 (0)161 236 0095

Marseille

76, rue de la République, 13002 Marseille, France
T: +33 (0)4 91 37 35 15 F: +33 (0)4 91 91 90 14

Newcastle

PO Box 438, Newcastle upon Tyne, NE3 9BT
United Kingdom
T: +44 (0)191 2136157

Paris

72 rue Henry Farman, 75015 Paris, France
T: +33 (0)1 53 17 36 00 F: +33 (0)1 53 17 36 01

Woking

Dukes Court, Duke Street
Woking, Surrey GU21 5BH United Kingdom
T: +44 (0)1483 728051 F: +44 (0)1483 755207

Hong Kong

14th Floor West, Warwick House, TaiKoo Place,
979 King's Road, Island East, Hong Kong
T: +852 2529 7037 F: +852 2527 8490

Shenzhen

Room 905, Excellence Mansion, No.98, No.1 Fuhua Road,
Futian Central Zone, Shenzhen, PRC, Post Code : 518048
T : +86 755 3336 1898 F : +86 755 3336 2060

Shenzhen - Beijing Branch Office

Room 1503, Block C, He Qiao Mansion, No. 8 Guanghua Road,
Chaoyang District, Beijing, PRC, Post Code : 100026
T : +86 10 8557 0116 F : +86 10 8557 0126

Beijing Joint Venture

Room 1507, Main Building, No. 60, Nan Li Shi Road,
Xi Cheng District, Beijing, PRC, Post Code : 100045
T : +86 10 8807 3718 F : +86 10 6804 3744

Mumbai

Antriksh, Unit no. 301, 3rd Floor, CTS Nos.
773, 773/1 to 7, Makwana Road, Marol, Andheri East ,
Mumbai 400069
T: +91 22 2647 3134

B 307, Great Eastern Summit Sector - 15, CBD Belapur Navi
Mumbai - 400 614
T: +91 22 2757 2745

New Delhi

5th Floor Guru Angad Bhawan, 71 Nehru Place, New Delhi
110019
T: +91 11 2641 3310

Noida

3/F, C-131, Sector 2, Noida-201301, U.P.
T: +91 120 432 6999

Singapore

25 Seah Street #04-01 Singapore 188381
T : +65 6227 3252 F : +65 6423 0178

Thailand

37th Floor, Unit F, Payatai Plaza Building, 128/404-405 Payathai
Road, Rajthwee, Bangkok 10400, Thailand
T : +662 216 6652 F : +662 216 6651

Vietnam

5/F Perfect Building, Le Thi Hong Gam St, District 1,
Ho Chi Minh City, Vietnam
T : +84 8 3821 7183 F : +84 8 3821 6967

