



# Edenham New Homes

Public Consultation  
Events 2020

31 October  
04 November

**Building  
for the  
Future**



THE ROYAL BOROUGH OF  
KENSINGTON  
AND CHELSEA



# New Homes Delivery Programme Stage 2 sites



# The Project Team



THE ROYAL BOROUGH OF  
KENSINGTON  
AND CHELSEA

HaworthTompkins

LICHFIELDS

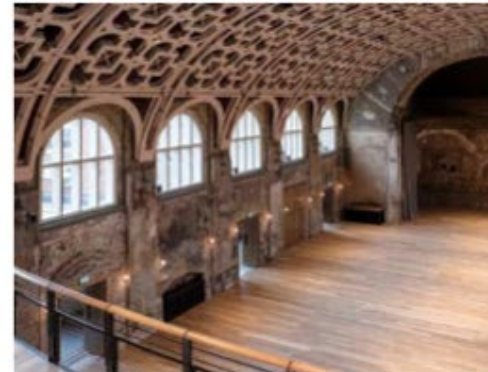
RBKC have appointed Haworth Tompkins as architects for the Edenham project, working together with planning and engagement consultants, Lichfields.



SILCHESTER HOUSING



COIN STREET HOUSING



BATTERSEA ARTSCENTRE



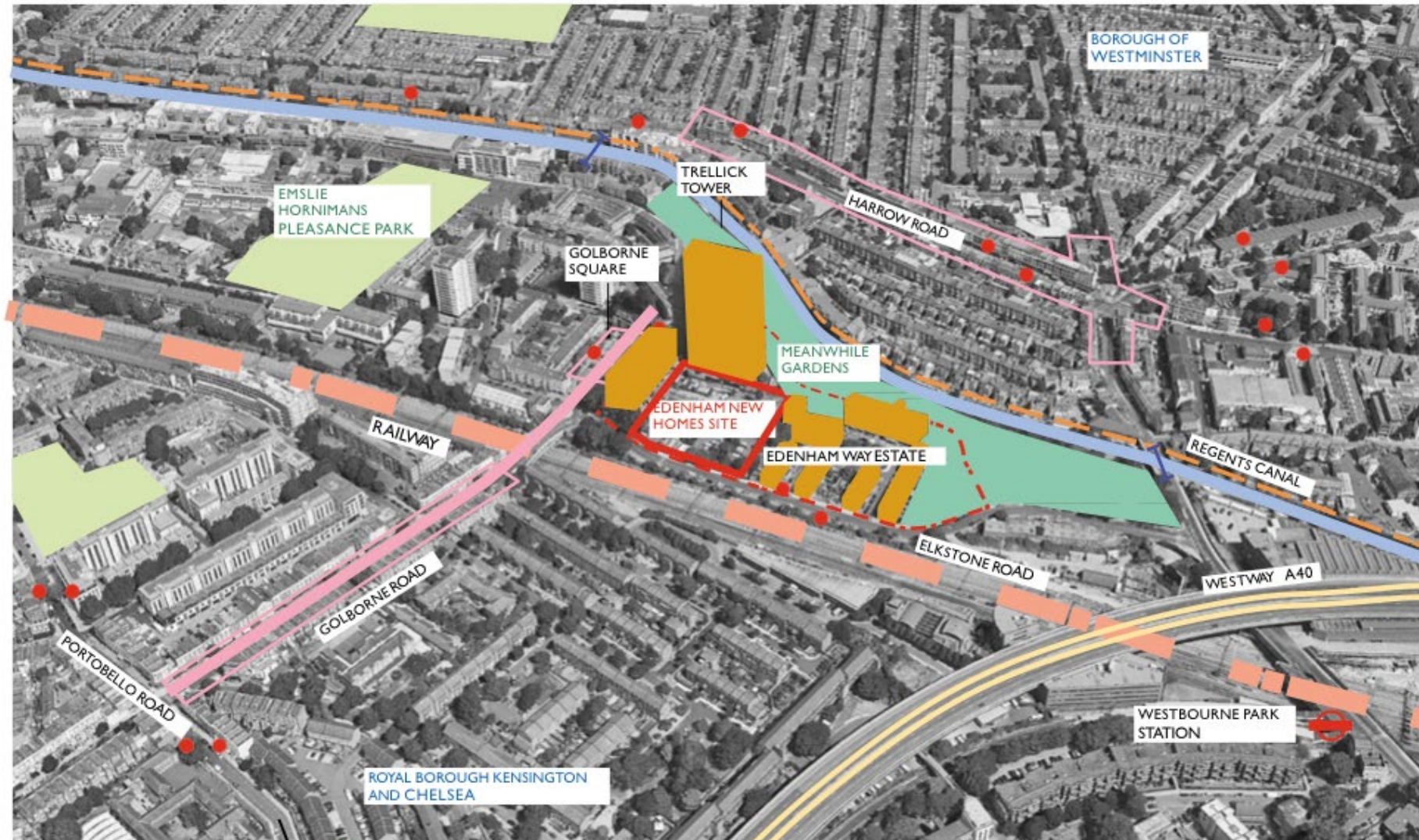
FISH ISLAND HOUSING



THE ROYAL BOROUGH OF  
KENSINGTON  
AND CHELSEA



# Site Context

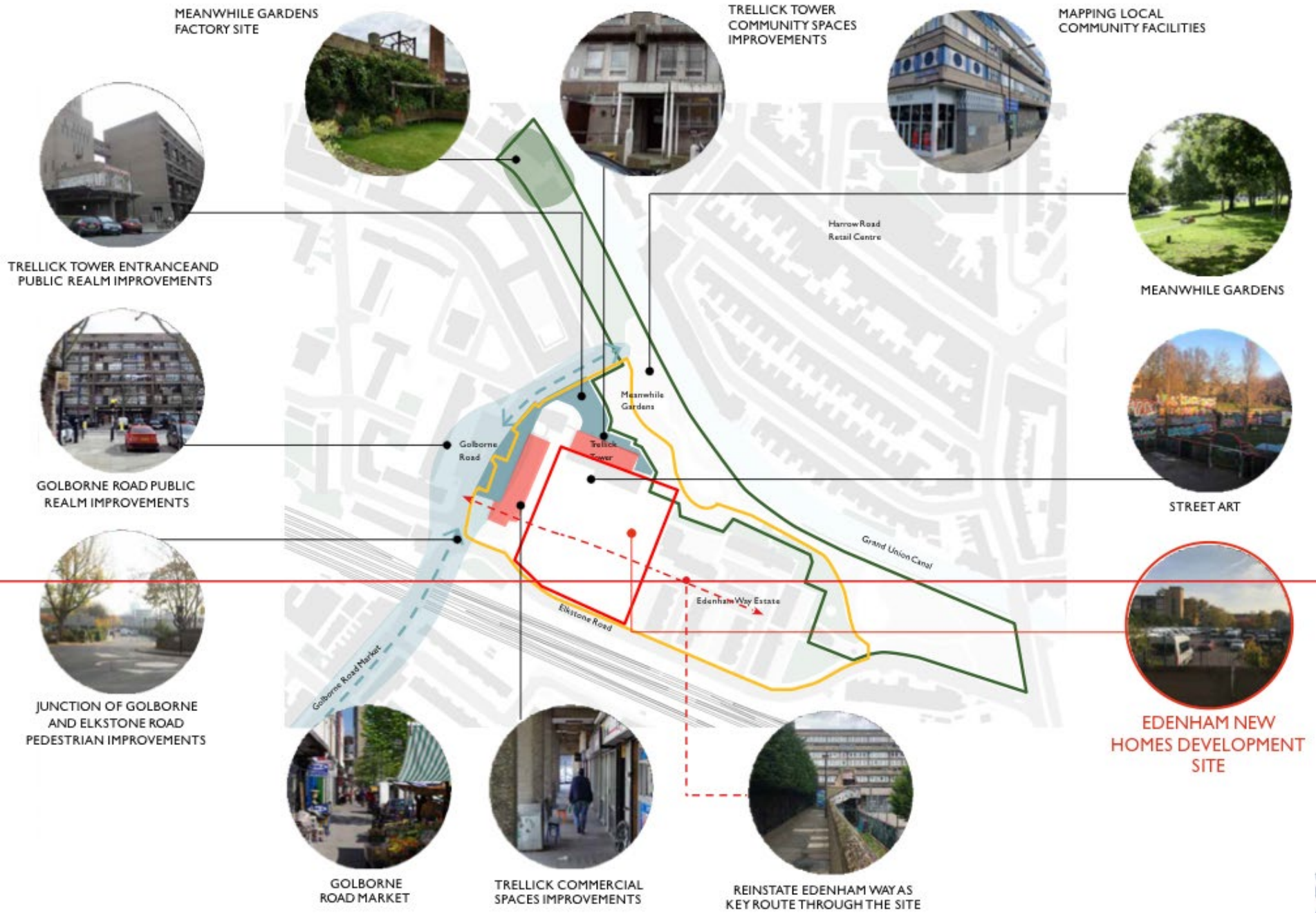


 LADBROKE GROVE STATION

- |   |   |   |   |   |
|---|---|---|---|---|
| N   |  | RAILWAY   |  | BUS STOP  |
|  | WESTWAY   |  | STATION   |  |
|  | BOROUGH BOUNDARY  |  | BRIDGE  | MARKET  |
|  | CHELTENHAM ESTATE   |  |   |   |
|  | SITE BOUNDARY   |   |   |   |

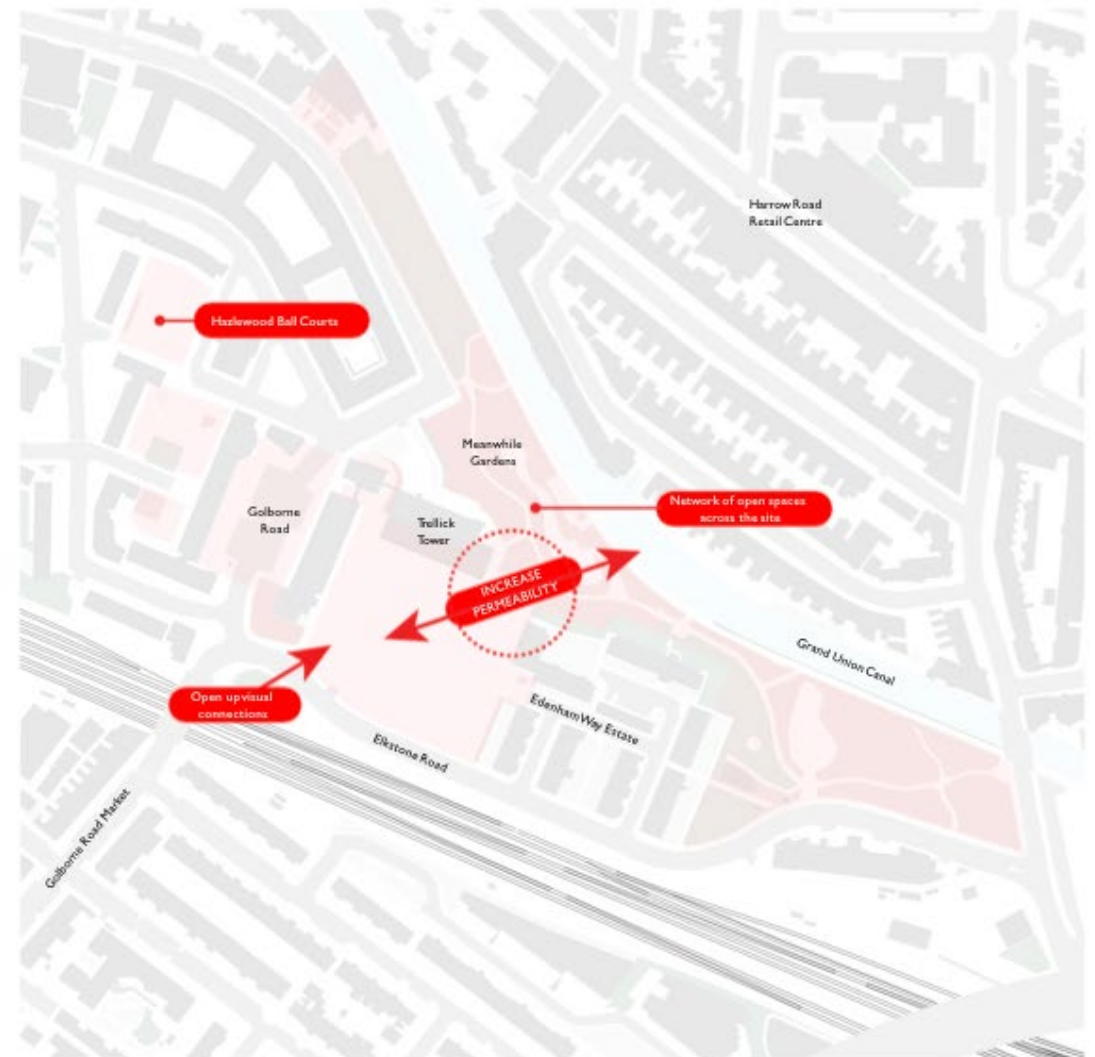


# Wider surroundings + other local projects



# Open spaces and amenity

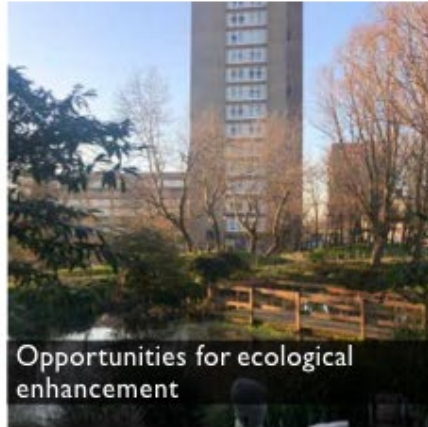
Linking a network of spaces across the site between Meanwhile Gardens and Golborne Rd





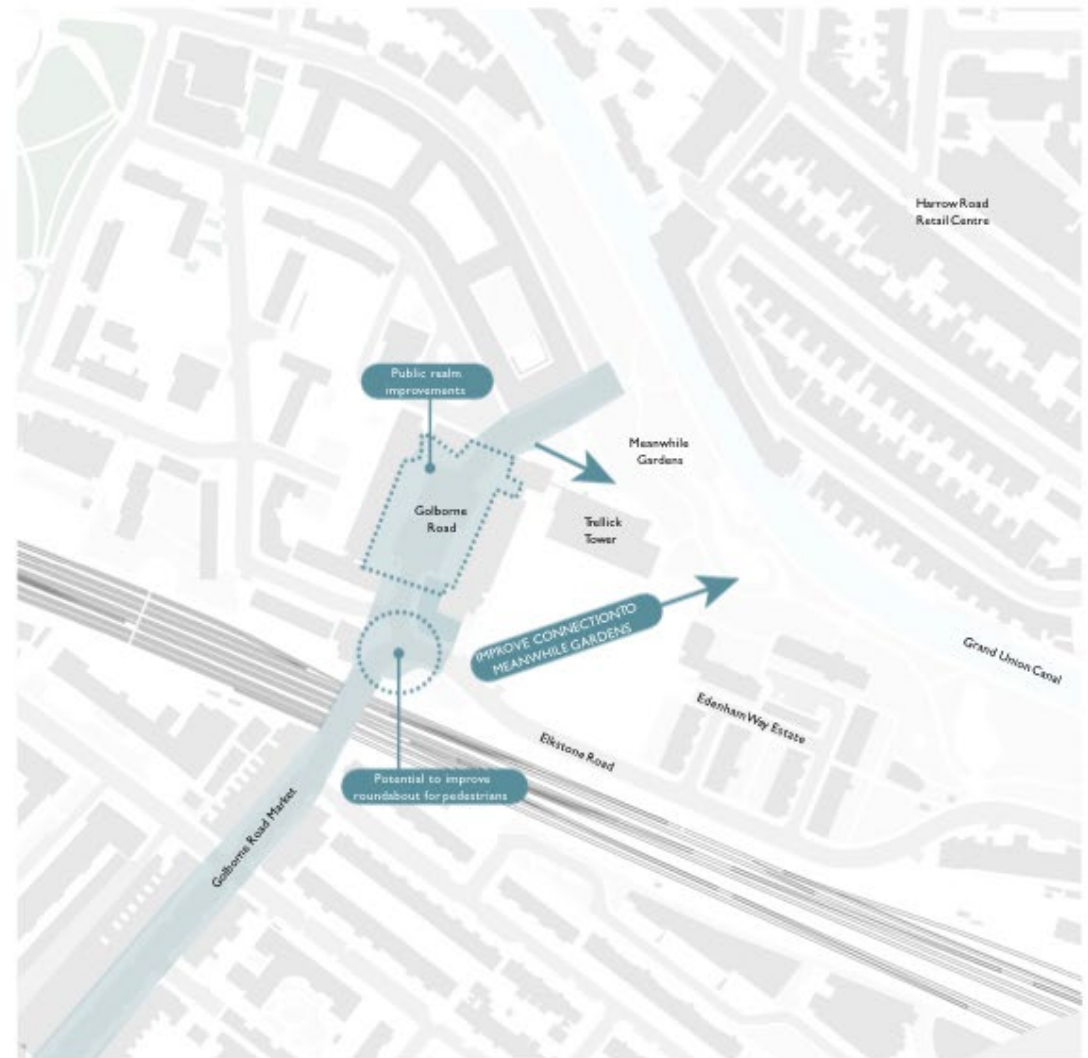
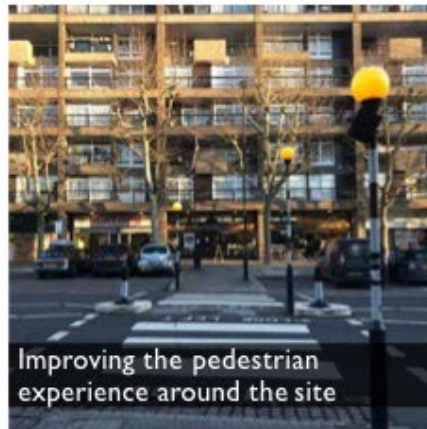
# Meanwhile Gardens

Ensuring this vital space for play, community and education is complemented and uplifted by proposals



# Golborne Road

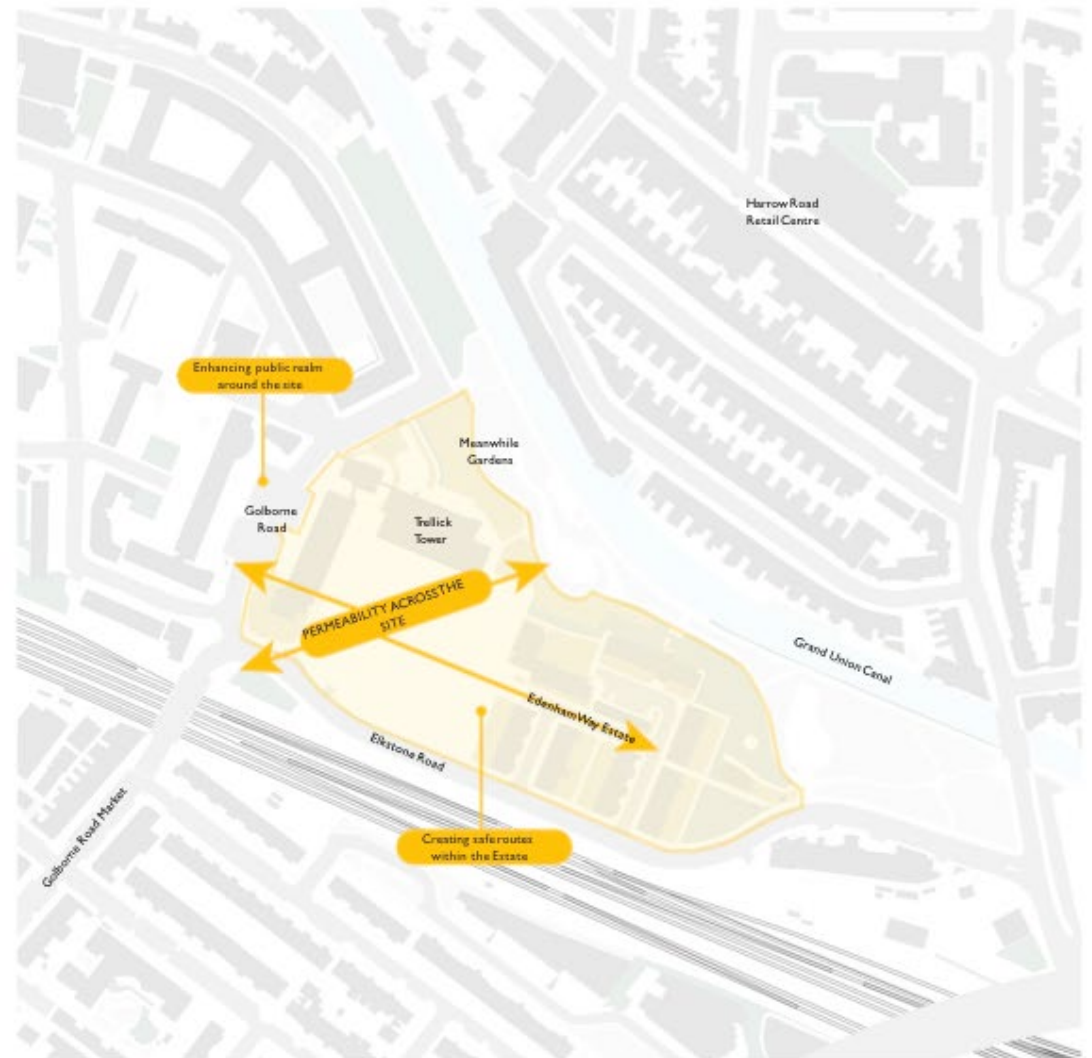
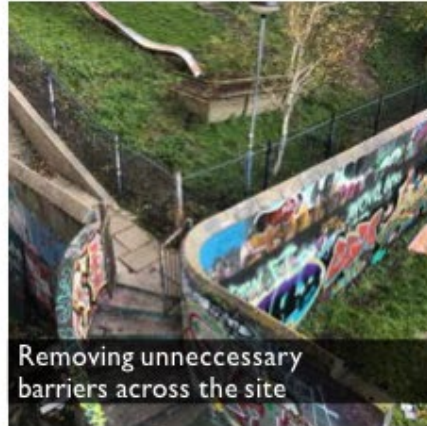
Enhancing the vibrancy of Golborne Rd through landscape improvements



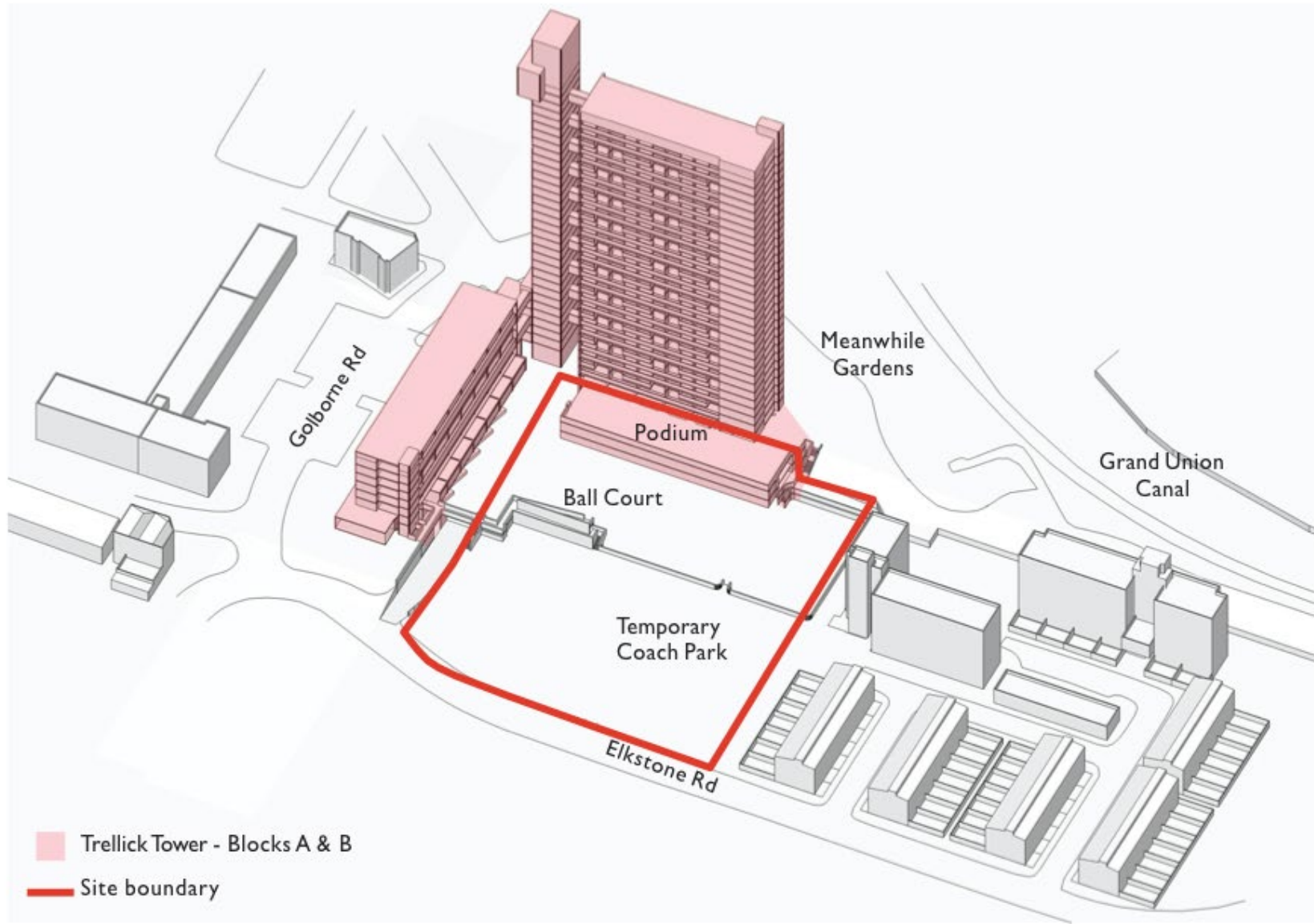


# Cheltenham Estate Public Realm

Ensuring safe, well-lit and comfortable routes across and around the Cheltenham Estate through simple interventions on the Edenham site



# The Site





# What are your views?



In order to produce a vibrant, successful scheme that the local community can feel proud of, and which addresses wider aspirations and community interests, we would like you to share your thoughts and suggestions on the opportunities for the site and the wider area.

Questions to consider could include:

Do you feel the site and spaces around the site are well used at all times?

Do you feel safe walking around the site at different times of the day?

What do you like about the area?

What are the positives that we must preserve?

How can we amplify the character of the existing community?

How can we improve the public realm as part of our proposals?

What are your thoughts on public art within areas of the site?

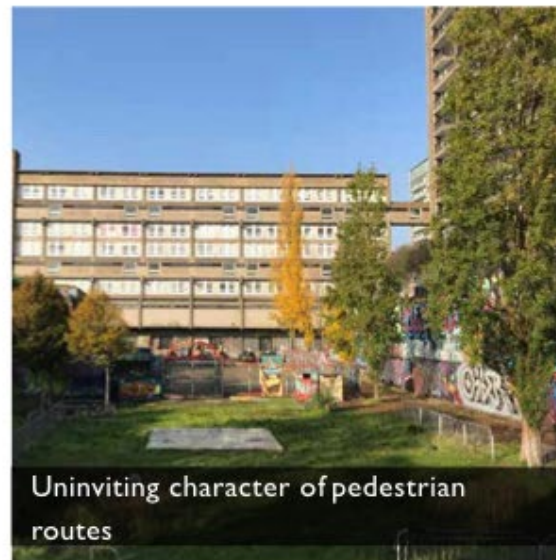


# What can we improve?

## Circulation and movement



## Lack of accessible amenity space



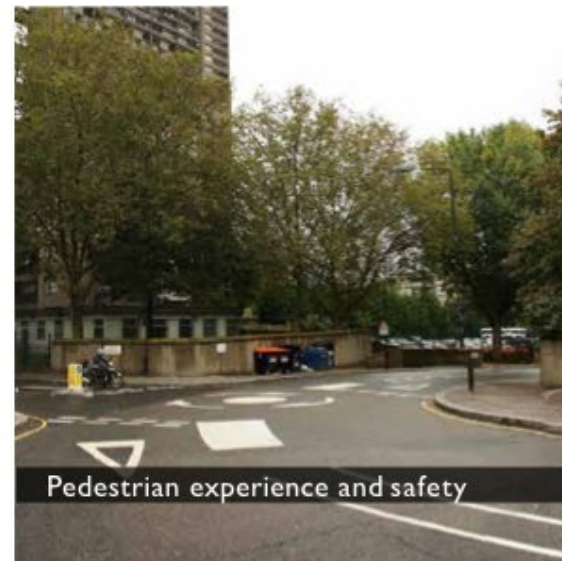
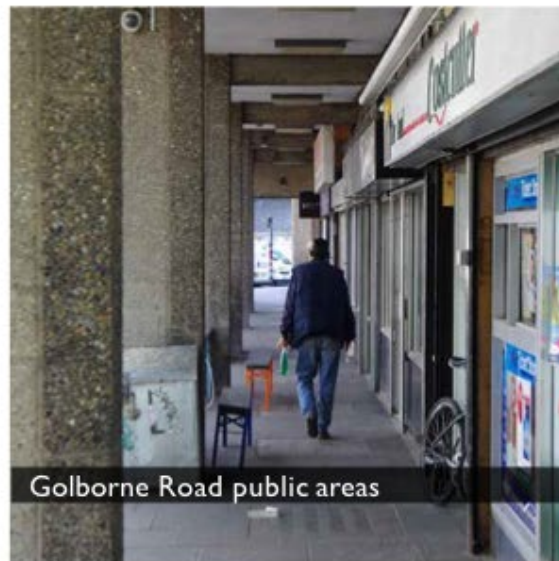


# What can we improve?

## Maintenance and servicing



## Surrounding public realm and highways

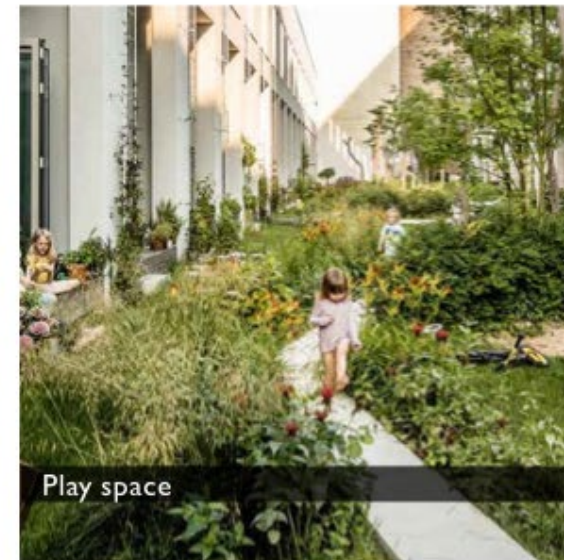


# What are the opportunities?

Create as many new homes as possible



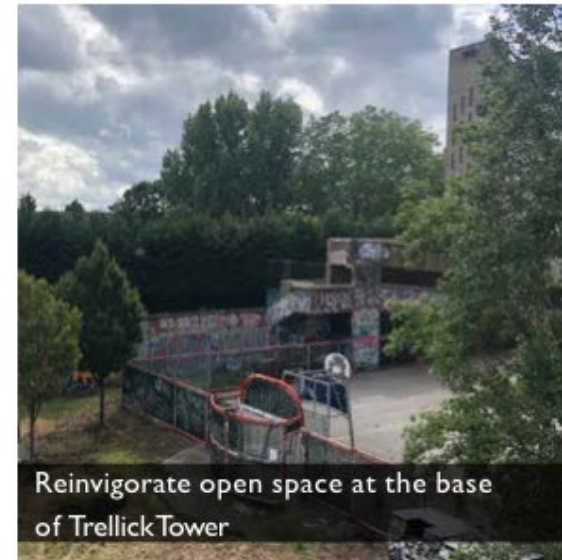
Create a new vibrant and green public space that connects Elkstone Road to Meanwhile Gardens



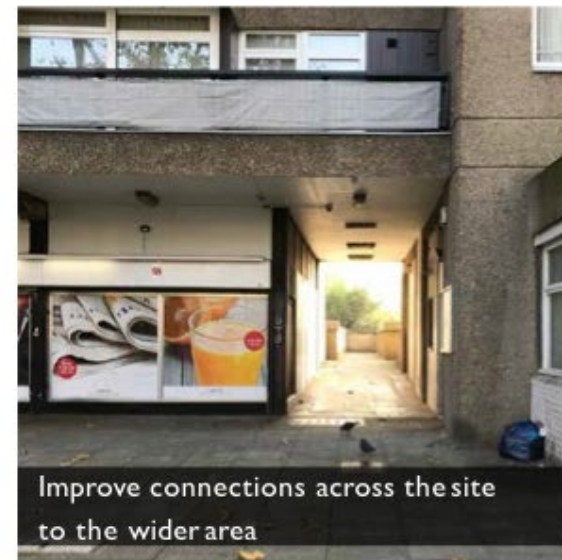
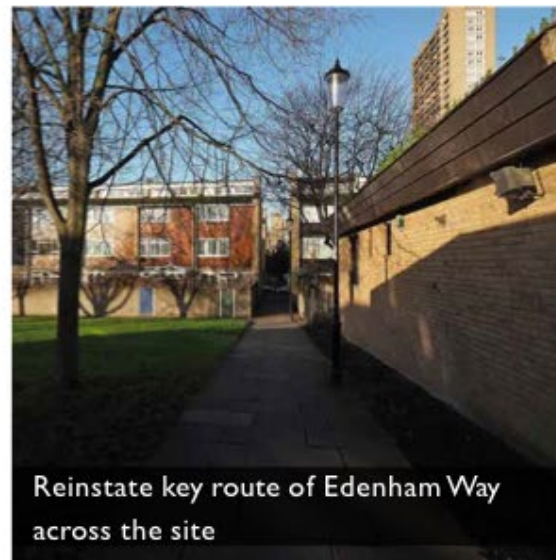


# What are the opportunities?

Enhance the setting of the Cheltenham Estate



Repair and enhance urban fabric and improve connectivity



# What is the identity of the area?



Local community and culture



Golborne Road market



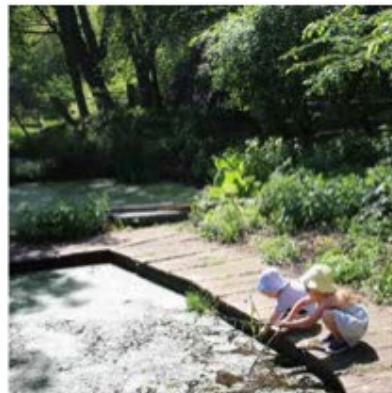
Age groups



Local shops and facilities



Modernist architecture



Meanwhile Gardens and the canal



Street art



Community spaces



# What are your priorities?



Providing as many new, good quality, genuinely affordable homes as possible



Sustainability and the environment



Promoting wellbeing and health



Active streets



Creating a neighbourhood of homes and spaces that feel welcoming both to existing communities on the estate, and to new residents



A neighbourhood that feels safe at all times of day

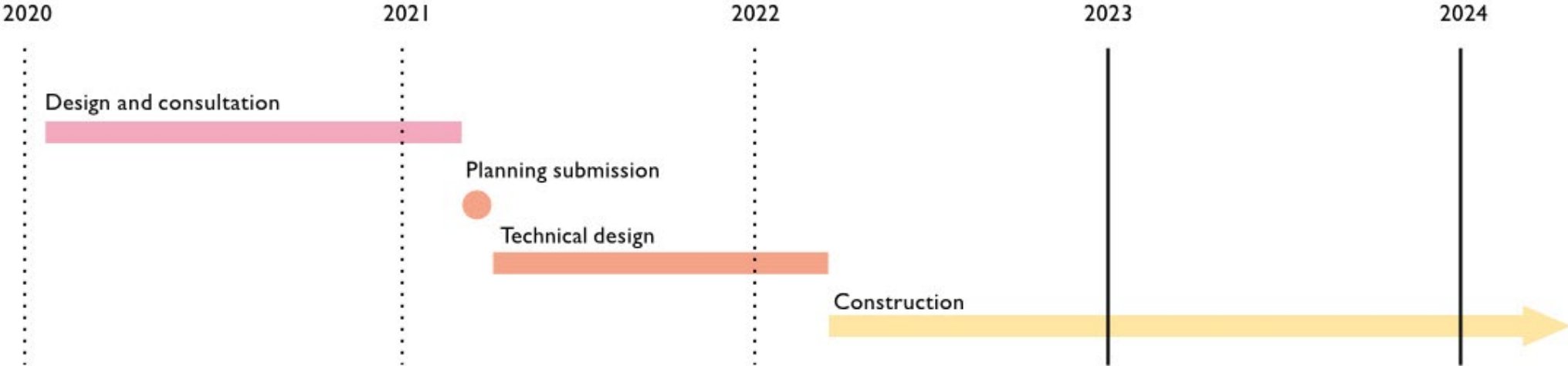


Building on the character of the Cheltenham Estate



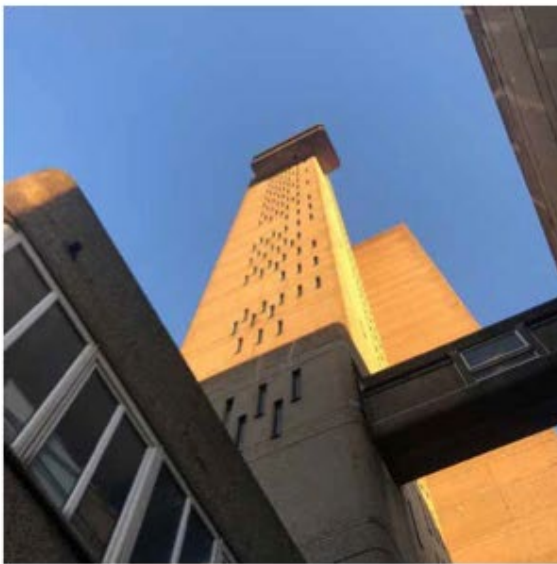
Creating safe spaces for play

# Next steps





# We want your feedback!



We want to understand what is important to you about the surrounding area and what your aspirations are for the future of the site.

Click on the link below to access feedback forms which will assist us in developing a detailed design for the site.

## LINK TO FEEDBACK FORMS

We will be hosting virtual Q+A sessions where you will be able to discuss this presentation with members of the project team on, you can attend either or both sessions:

Session 1 – Saturday 31st October from 10:30 am – 11:30 am

Session 2 – Tuesday 4th November from 5:30 pm – 6:30 pm

You can access these and find out more about the proposals on the project website: [https://](https://www.rbkc.gov.uk/housing/new-homes-consultation/new-homes-delivery-programme-stage-2-sites)

[www.rbkc.gov.uk/housing/new-homes-consultation/](https://www.rbkc.gov.uk/housing/new-homes-consultation/new-homes-delivery-programme-stage-2-sites)

[new-homes-delivery-programme-stage-2-sites](https://www.rbkc.gov.uk/housing/new-homes-consultation/new-homes-delivery-programme-stage-2-sites)

The website will also be updated regularly with details of our future consultation events.

For all enquiries please contact us via email at - [newhomesenquiries@rbkc.gov.uk](mailto:newhomesenquiries@rbkc.gov.uk) if you are having accessibility issues to view these materials presented or access to the feedback form hard copies can be requested via our email [NewHomesEnquiries@rbkc.gov.uk](mailto:NewHomesEnquiries@rbkc.gov.uk). If you require the consultation materials in another language please call **07739 313539** between 9am and 5pm. Please note these materials can also be provided in another language if required.

No text

# Thank you for your time!

**Building  
for the  
Future**



THE ROYAL BOROUGH OF  
KENSINGTON  
AND CHELSEA