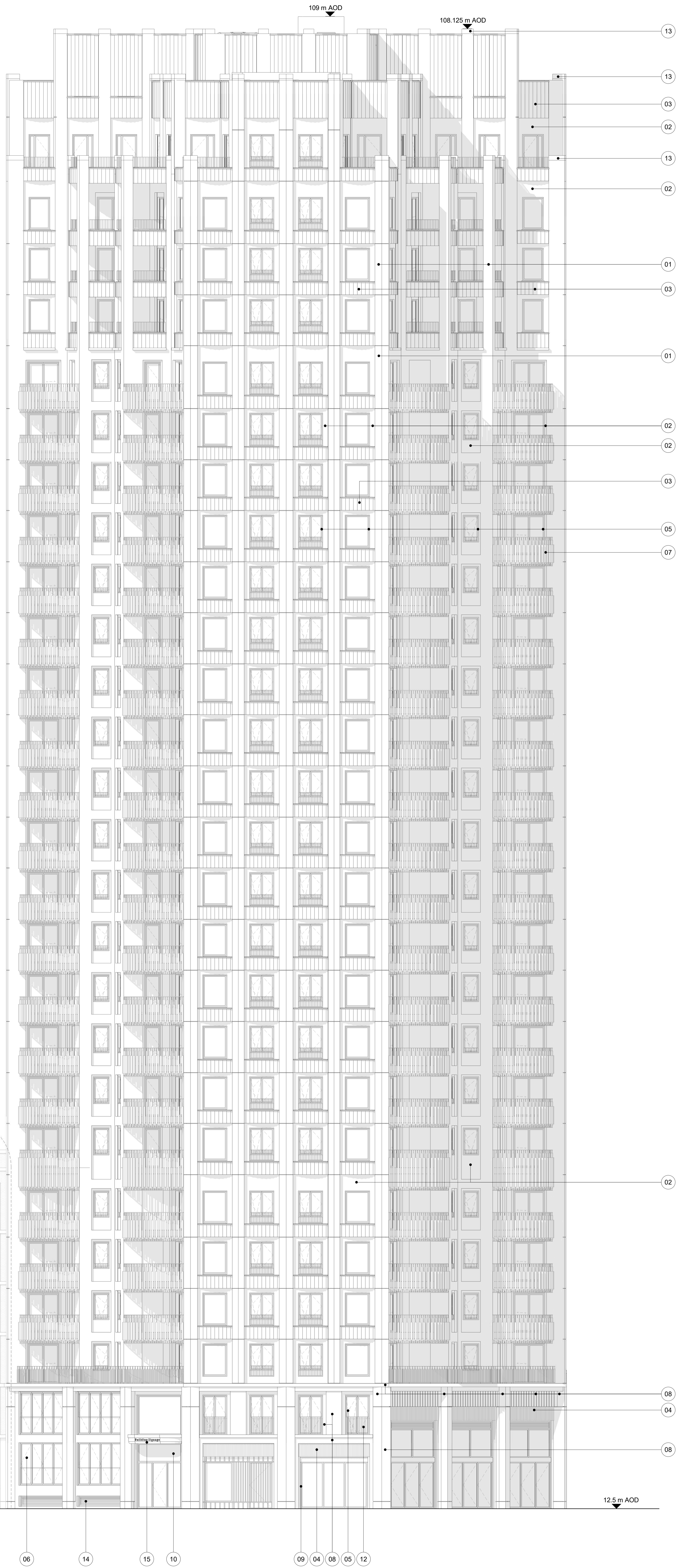


- Material Key:**
- 01 Pigmented reconstituted stone / precast concrete (Limestone - colour TBC)
  - 02 Pigmented precast concrete (Green - colour TBC)
  - 03 Curved glazed ceramic spandrel panel and cill
  - 04 Glazed ceramic
  - 05 Composite window frames with PPC aluminium finish
  - 06 Composite wintergarden frames with PPC aluminium finish
  - 07 PPC steel balcony railing with decorative detailing
  - 08 Stone
  - 09 PPC steel frame window / door
  - 10 PPC steel frame window / door with integrated louvres
  - 11 Buff brick
  - 12 PPC steel railings
  - 13 Metal coping (patinated brass - colour TBC)
  - 14 PPC steel frame louvre
  - 15 PPC steel canopy
  - 16 Pigmented precast concrete (Ochre - Colour TBC)



See drawing no. ECD-EC05-T1-MLA-07-ZZ-DR-A-053154 for mansion block elevations

35.7 m AOD

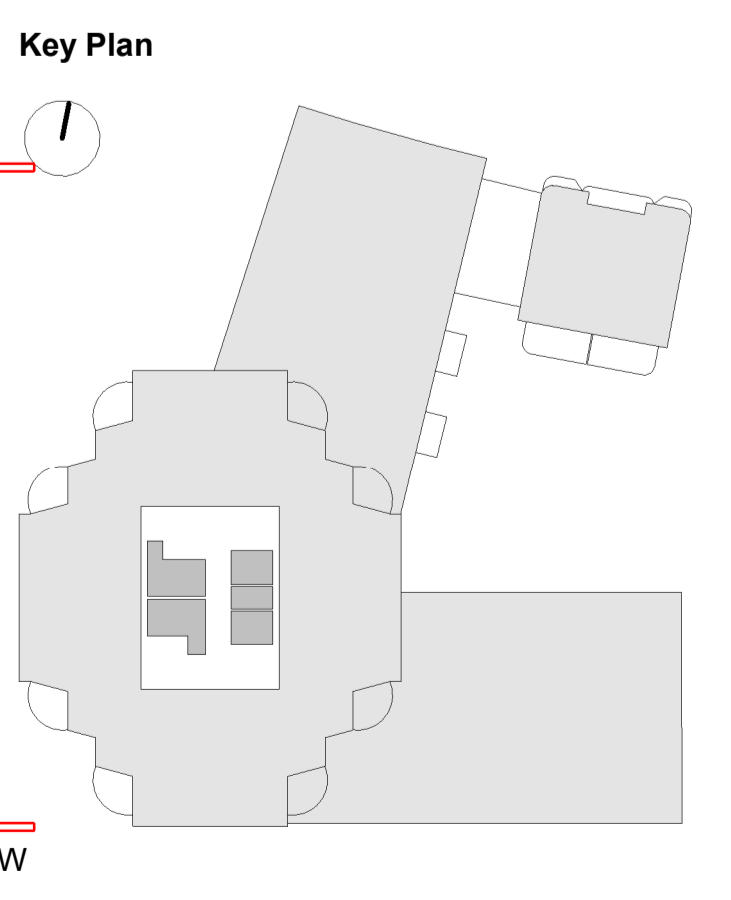
9 m AOD

12.5 m AOD

Warwick Crescent

Plot EC05

The Table



Rev	Details	Drwn	Chkd	Date
1	Planning Issue	MLA	MLA	July 2024

Disclaimer

Architects

Key

Client / Title

PLANNING ISSUE  
© Maccreanor Lavington Ltd.

Do not scale from this drawing. Verify all dimensions on site. Drawing should be read in conjunction with information from all other design consultants and contractors. All drawings in digital format are for reference only, paper copies are available on request.

**MACCREANOR LAVINGTON**  
63 Gee Street, London EC1V 3RS  
uk@maccreanorlavington.com  
+44 (0)20 7336 7353

Client: Earls Court Partnership Limited  
Project: Earls Court Development  
Title: EC05 Proposed GA Elevation - Tower West  
Scale: 1:100 @ A0  
ECD-EC05-T1-MLA-07-ZZ-DR-A-053151

