

Violence against Women & Girls Partnership Annual Report 2019-20 Highlights

Shabana Kausar
Violence against Women and Girls Strategic Lead

September 2020

Contents:

<u>Introduction</u>	Page 2
<u>Annual Highlights</u>	Page 4
<u>Achievements by Strategic Priority</u>	Page 5
<u>Access</u>	Page 5
<u>Response</u>	Page 6
<u>Community</u>	Page 7
<u>Practitioners</u>	Page 8
<u>Children & Young People</u>	Page 8
<u>Perpetrators</u>	Page 9
<u>Justice & Protection</u>	Page 10
<u>Challenges and Opportunities</u>	Page 11
<u>Survivor Experiences</u>	Page 12
<u>Priorities for 2020-21</u>	Page 13

1. Introduction:

Ending Violence against Women & Girls (VAWG) is a strategic priority for the London boroughs of Hammersmith & Fulham (H&F), Kensington & Chelsea (K&C) and Westminster (WCC). This Annual Report captures the work that has taken place across our partnership by both statutory and voluntary partners. Our approach is underpinned by our 2015-2020 VAWG Strategy and Addendum, which highlights seven strategic priorities:



Our VAWG Strategy details how our Partnership will deliver a Coordinated Community Response (CCR) to VAWG; it keeps survivors and children at the centre of its aims and objectives, whilst also holding perpetrators accountable for their actions. Our CCR model is our local, whole system approach and highlights how ending VAWG must be everyone's responsibility.

Our VAWG Strategic Partnership and Governance Structure:

Our VAWG response is overseen by a governance structure which includes both strategic and operational representation from statutory and voluntary partners and feeds into a number of statutory boards to ensure VAWG remains high on the agenda.

The Board is chaired by the Executive Directors of Children’s Services. The Board is influenced by six Operational Groups that each have a coordinator and a chair and work to detailed action plans based on the seven strategic commitments

Our VAWG partnership is led by the voices and experiences of victims and survivors of abuse and inform our strategic and operational response.



Work of our Operational Groups:

Modern Slavery & Exploitation:

The three boroughs have continued to strengthen its coordinated community response to MSE through the operational group, the work of partners and the MSE coordinator. This has included developing a robust data dashboard, delivering training to 650 professionals, and developing a theory of change model.

Harmful Practices:

The group have a new Coordinator and have focused on data collection to better understand need. Key successes include a conference attended by over 50 professionals and a new theory of change model.

Risk & Review Group:

The group continues to monitor the effectiveness of MARACs, SDVC and DHRs. In addition, each meeting is focusing on risk in relation to a different VAWG strand. Key successes include developing a DHR Protocol and establishing a DHR Task and Finish Group.

Specialist Services Group:

This group provides a space for a range of VAWG providers to come together to identify need, challenges and develop best practice.

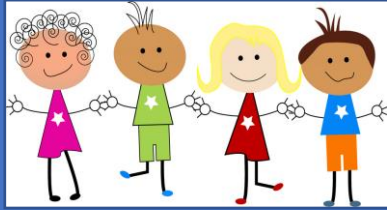
Children & Health Group:

This group has focused on training and trained 127 delegates from Primary Care, 692 at ChelWest, 48 midwives and 116 colleagues from Social Care. The CHOG Coordinator also delivered a lecture in Tallinn, Estonia promoting the borough’s coordinated community response.

Housing Group:

This group focused on raising awareness of the Pan-London Reciprocal Scheme, housing’s role in Perpetrator Management and the Criminal Justice System. The group has developed a dataset and increased referrals into MARAC to 5-11% (the national rate is 2%).

2. 2019-20 Highlights:



Children supported this year:
 Angelou: 181 young women and girls and indirectly supported 950.
 Health Partnership Education: 182 teachers across 12 WCC schools.
 Women and Girls Network: 916 young women supported.



The new MSE CCR Theory of Change Model

16 DAYS OF ACTIVISM

To end violence against women

Programme of events 2019

25 November is the United Nations Day for the Elimination of Violence against Women. Partners across Hammersmith & Fulham Council, the Royal Borough of Kensington and Chelsea and the City of Westminster are organising a series of events to celebrate 16 Days of Activism leading to 10 December International Human Rights Day.

<p>OPEN TO ALL</p> <p>Her Story, Her Justice: Domestic abuse survivors and the criminal justice system</p> <p>Monday 11 November, 5.30-8pm</p> <p>Advice are holding their annual review which will focus on best practice models in relation to domestic abuse survivors and how their experience the criminal justice system. The key note speaker will be Nicola Ingle, Domestic Abuse Commissioner. Click here to book ☞</p>	<p>OPEN TO ALL</p> <p>Hospitals and Human Rights</p> <p>26 November</p> <p>Charing Cross Hospital 1st Floor Main Building</p> <p>2 December</p> <p>Hammersmith Hospital Main Reception</p> <p>5 December</p> <p>St Mary's Hospital Reception, Queen Elizabeth Queen Mary Building</p> <p>Hospital Healthcare Trust are holding talks from 10.30am to 12.30pm across these hospitals to raise awareness of violence against women and human rights.</p>	<p>OPEN TO ALL</p> <p>Training: Raising awareness of sexual violence</p> <p>Wednesday 4 December 9.30am-1pm</p> <p>Kensington Town Hall</p> <p>This free training is being delivered by Solace Women's Aid and will focus on understanding victims, understanding the law and how to support those who have been affected by sexual violence. To book, contact Gabriela Hughes at g.bogdan@solacewomensaid.org ☞</p>
<p>OPEN TO ALL</p> <p>Blooming Strong coffee morning</p> <p>25 November, 10am-12 noon</p> <p>Kensington Town Hall Committee Room 11</p> <p>Venue: The Hammersmith & Fulham</p> <p>Join Standing Together as they celebrate the strength of women who have survived male violence or supported someone who has with a coffee morning luncheon. Services can nominate women to receive a Blooming Strong award to celebrate the strength of women experiencing and surviving male violence against women and the strength of services supporting them. Send nominations by 15 November to admin@standingtogether.org.uk ☞ We will also be celebrating Women across all three boroughs over the luncheon on 25 November. If you would like to join us and the same email address above.</p>	<p>OPEN TO PROFESSIONALS ONLY</p> <p>Annual Violence Against Women and Girls Conference: What does justice look like for survivors?</p> <p>Monday 2 December, 9.30am-1pm</p> <p>Small Hall</p> <p>Join us for our annual conference which this year will focus on so called 'harmful practices' and what justice looks like for survivors. The half day conference will include special guest speakers, workshops and opportunities to learn about how we can better support those affected by abuse. Click here to book ☞</p>	<p>OPEN TO PROFESSIONALS ONLY</p> <p>Workshop: Embedding learning from domestic homicides reviews</p> <p>Monday 9 December, 2-4.30pm</p> <p>Venue: IFC</p> <p>The three boroughs have sadly seen a number of domestic homicides take place. We are determined to learn lessons and ensure this does not happen again. This workshop is aimed at professionals and is an important priority. To book, contact Sabina Kapor at sabina.kapor@crk.gov.uk ☞</p>

Logos: h&f, The Royal Borough of Kensington and Chelsea, City of Westminster

Programme of Events: Marking United Nations 16 Days of Activism November 2019



Delivery of EU funded training: The first accredited VAWG Training Programme.



Multi-agency workshop to develop the new VAWG Strategy.

3. Achievement by Strategic Priority:

Priority 1: Access

The three borough VAWG Partnership is committed to providing high quality services which are accessible, flexible and available in a timely way to a wide range of survivors. The Partnership will ensure that access to services is easy, early and quick.

Activity													
1.1	<p>Co-location: Specialist services are co-located in a range of settings to improve response to VAWG, including at:</p> <table border="1"> <tr> <td>Victim Support IDVA based in Chelsea and Westminster Hospital</td> <td>Impact project: Advance, Victim Support and STADV team in H&F police</td> </tr> <tr> <td>Advance/DVIP in Children's services in H&F and Advance in K&C</td> <td>Advance IDVA based at H&F housing</td> </tr> </table>	Victim Support IDVA based in Chelsea and Westminster Hospital	Impact project: Advance, Victim Support and STADV team in H&F police	Advance/DVIP in Children's services in H&F and Advance in K&C	Advance IDVA based at H&F housing								
	Victim Support IDVA based in Chelsea and Westminster Hospital	Impact project: Advance, Victim Support and STADV team in H&F police											
	Advance/DVIP in Children's services in H&F and Advance in K&C	Advance IDVA based at H&F housing											
1.2	<p>Website: Angelou Partnership website provides a one stop shop of information and services available. This includes an online directory of local and national support services. There were 1,000 visits and re-visits in this period.</p>												
1.3	<p>Whole Housing Approach: This project looks to create a coordinated and whole housing approach to domestic abuse across the following strands of work:</p> <table border="1"> <tr> <td>Mobile Advocacy</td> <td>46 survivors supported.</td> <td>Sanctuary scheme</td> <td>16 properties secured.</td> </tr> <tr> <td>Co-located Housing Advocacy</td> <td>106 survivors supported.</td> <td>Managed reciprocals</td> <td>18 property requests since April 2019.</td> </tr> <tr> <td>Flexible Funding</td> <td>48 survivors and 39 dependent children supported.</td> <td>Privately Owned Housing</td> <td>3 talks delivered, attended by 145 professionals. 9 meetings facilitated.</td> </tr> </table>	Mobile Advocacy	46 survivors supported.	Sanctuary scheme	16 properties secured.	Co-located Housing Advocacy	106 survivors supported.	Managed reciprocals	18 property requests since April 2019.	Flexible Funding	48 survivors and 39 dependent children supported.	Privately Owned Housing	3 talks delivered, attended by 145 professionals. 9 meetings facilitated.
	Mobile Advocacy	46 survivors supported.	Sanctuary scheme	16 properties secured.									
	Co-located Housing Advocacy	106 survivors supported.	Managed reciprocals	18 property requests since April 2019.									
	Flexible Funding	48 survivors and 39 dependent children supported.	Privately Owned Housing	3 talks delivered, attended by 145 professionals. 9 meetings facilitated.									
1.4	<p>Attendance at Female Genital Mutilation (FGM) Clinics:</p> <table border="1"> <tr> <td rowspan="3">102 women were seen in FGM clinics across the 3 boroughs:</td> <td>H&F: 32 women</td> <td rowspan="3">37 referrals were made to children's services about concerns of children at risk of FGM:</td> <td>H&F: 10 children</td> </tr> <tr> <td>K&C: 34 women</td> <td>K&C: 7 children</td> </tr> <tr> <td>WCC: 36 women</td> <td>WCC: 20 children</td> </tr> </table>	102 women were seen in FGM clinics across the 3 boroughs:	H&F: 32 women	37 referrals were made to children's services about concerns of children at risk of FGM:	H&F: 10 children	K&C: 34 women	K&C: 7 children	WCC: 36 women	WCC: 20 children				
	102 women were seen in FGM clinics across the 3 boroughs:		H&F: 32 women		37 referrals were made to children's services about concerns of children at risk of FGM:	H&F: 10 children							
			K&C: 34 women			K&C: 7 children							
WCC: 36 women		WCC: 20 children											
1.5	<p>Group Support Programmes: 150 women attended the Butterfly Support Group provided by Hestia. This provides on-going support for women recovering from an abusive relationship. Sessions in March were put on hold due to COVID-19.</p>												
1.6	<p>Survivors provided refuge in the three boroughs:</p> <table border="1"> <tr> <td>K&C:</td> <td>57 women and 51 children were in refuge accommodation. This includes 42 new referrals this year.</td> </tr> <tr> <td>WCC:</td> <td>70 women and 72 children were in refuge accommodation. This includes 40 new referrals this year.</td> </tr> <tr> <td>H&F:</td> <td>39 women and 33 children were in refuge accommodation between April 2019 – March 2020.</td> </tr> </table>	K&C:	57 women and 51 children were in refuge accommodation. This includes 42 new referrals this year.	WCC:	70 women and 72 children were in refuge accommodation. This includes 40 new referrals this year.	H&F:	39 women and 33 children were in refuge accommodation between April 2019 – March 2020.						
	K&C:	57 women and 51 children were in refuge accommodation. This includes 42 new referrals this year.											
	WCC:	70 women and 72 children were in refuge accommodation. This includes 40 new referrals this year.											
H&F:	39 women and 33 children were in refuge accommodation between April 2019 – March 2020.												

Priority 2: Response

Services are consistent, personalised, confidential and lead to survivors feeling and being safer in both the short and long-term.

Activity																	
2.1	<p>Angelou Partnership (AP): AP consists of 10 specialist services and continued to deliver high quality specialist service provision, despite significant resource challenges. They supported over 3616 survivors and identified that survivors required more support with mental health and substance use. They also saw an increase in women with no recourse to public funds.</p> <p>WCC received the highest number of referrals (40.9% n=1,127) Followed by H&F (35.5% n=978) and then K&C (23.5% n=647). Data shows 51% of cases were at high risk, the highest age group supported were between 26-35 years old and 54% were BAME.</p> <table border="1" style="width: 100%; margin-top: 10px;"> <thead> <tr> <th>Outcomes:</th> <th>Baseline</th> <th>Achieved</th> </tr> </thead> <tbody> <tr> <td>Improved safety of victims and their children:</td> <td>65%</td> <td>87%</td> </tr> <tr> <td>Women report a reduction in abuse due to support & advice:</td> <td>67%</td> <td>94%</td> </tr> <tr> <td>Women and girls report improvement in quality of life:</td> <td>55%</td> <td>78%</td> </tr> <tr> <td>Percentage of VAWG cases where risk is reduced at case closure:</td> <td>62%</td> <td>94%</td> </tr> </tbody> </table>	Outcomes:	Baseline	Achieved	Improved safety of victims and their children:	65%	87%	Women report a reduction in abuse due to support & advice:	67%	94%	Women and girls report improvement in quality of life:	55%	78%	Percentage of VAWG cases where risk is reduced at case closure:	62%	94%	
Outcomes:	Baseline	Achieved															
Improved safety of victims and their children:	65%	87%															
Women report a reduction in abuse due to support & advice:	67%	94%															
Women and girls report improvement in quality of life:	55%	78%															
Percentage of VAWG cases where risk is reduced at case closure:	62%	94%															
2.2	<p>Pan-London services: The three boroughs benefit from additional service provision via Pan London funded organisations such as Victim Support, Rape Crisis and Ascent, which work closely with AP to ensure an effective response to survivors:</p> <table border="1" style="width: 100%; margin-top: 10px;"> <tbody> <tr> <td style="width: 20%;">Ascent</td> <td>Specialist Refuge: H&F: 1 woman accessed specialist refuge services, WCC: 1 woman accessed 1:1 outreach and 2 women accessed specialist refuge services, K&C: 2 women accessed specialist refuge services. WGN supported 977 survivors with counselling and 314 callers via the Freephone Advice Line and SV Helpline.</td> </tr> <tr> <td>Rape Crisis</td> <td>WCC: 32 women supported and 17 women in K&C. Rape Crisis highlighted concerns about reduction in conviction rates, despite an increase in referrals.</td> </tr> </tbody> </table>	Ascent	Specialist Refuge: H&F: 1 woman accessed specialist refuge services, WCC: 1 woman accessed 1:1 outreach and 2 women accessed specialist refuge services, K&C: 2 women accessed specialist refuge services. WGN supported 977 survivors with counselling and 314 callers via the Freephone Advice Line and SV Helpline.	Rape Crisis	WCC: 32 women supported and 17 women in K&C. Rape Crisis highlighted concerns about reduction in conviction rates, despite an increase in referrals.												
Ascent	Specialist Refuge: H&F: 1 woman accessed specialist refuge services, WCC: 1 woman accessed 1:1 outreach and 2 women accessed specialist refuge services, K&C: 2 women accessed specialist refuge services. WGN supported 977 survivors with counselling and 314 callers via the Freephone Advice Line and SV Helpline.																
Rape Crisis	WCC: 32 women supported and 17 women in K&C. Rape Crisis highlighted concerns about reduction in conviction rates, despite an increase in referrals.																
2.3	<p>Meeting Survivors Where They Are: The service looks to support survivors who have additional and complex needs so that fewer victims will reach crisis point. This is the final year of this Home Office funded project. A team of 5.6 front line workers supported survivors focusing on their intersectional needs:</p> <table border="1" style="width: 100%; margin-top: 10px;"> <thead> <tr> <th>Organisation</th> <th>Annual Referrals</th> <th>Organisation</th> <th>Annual Referrals</th> </tr> </thead> <tbody> <tr> <td>Advance</td> <td>340</td> <td>Women's Trust</td> <td>75</td> </tr> <tr> <td>Galop</td> <td>16</td> <td>Women & Girls Network</td> <td>95</td> </tr> <tr> <td>Al-Hasaniya</td> <td>19</td> <td>Total:</td> <td>545</td> </tr> </tbody> </table>	Organisation	Annual Referrals	Organisation	Annual Referrals	Advance	340	Women's Trust	75	Galop	16	Women & Girls Network	95	Al-Hasaniya	19	Total:	545
Organisation	Annual Referrals	Organisation	Annual Referrals														
Advance	340	Women's Trust	75														
Galop	16	Women & Girls Network	95														
Al-Hasaniya	19	Total:	545														
2.4	<p>Multi-Agency Risk Assessment Conferences: Standing Together provides independent coordination of the three local authority MARACs. This coordination service ensures that the MARAC process runs smoothly, is effective and keeps the survivor at the centre of the process, whilst holding perpetrators to account and looking after the safety of any children. Data for 2019-20 shows:</p>																

	WCC	K&C	H&F
	446 referrals (357 referrals last year) 320 children. BAME: 55.6%, LGBT: 3.4%, Disability: 15.5%, Male victims: 5.6%	325 referrals (294 referrals last year) 193 children. BAME: 45.5%, LGBT: 5.9%, Disability: 16.6%, Male victims: 8.3%	429 referrals (398 referrals last year) 318. BAME: 49.4%, LGBT: 3.7%, Disability: 15.6%, Male victims: 9.6%
	MARAC is well attended by a range of agencies. Work was done with a few agencies where there was inconsistent or limited attendance. Outstanding actions continued to be an issue. A quick response to COVID-19 was coordinated by Standing Together with a move to online meetings, a best practice safety briefing and monthly extraordinary meetings to manage the transition to online meetings.		
2.5	Modern Slavery & Exploitation (MSE): A new adult referral pathway has been developed by the MSE Coordinator which has seen an increase in local authority referrals to the National Referral Mechanism from the previous year. K&C: 11 referrals (+57%), H&F: 19 referrals (4 were adults +50%) WCC: 18 referrals (+125%). Over 10 agencies shared anonymous data with Stop the Traffik to develop a robust data dashboard. A multi-agency case conference group has been set up which has resulted in risk assessments of 72 cases; 23 joint welfare visits between police and specialist agencies, and 60 outreach visits by specialist agencies. 47 Individuals engaged in ongoing outreach.		
2.6	Domestic Abuse Project in Chelsea and Westminster Hospital NHS: 373 IDVA referrals were made compared to 347 in 2018-19 representing a 7% increase. In total 660 workers have undertaken Level 2 training this year. This is a 23% increase from 2018-19.		

Priority 3: Community

The three boroughs are a safer place for women and girls where residents, take responsibility if they encounter abuse and know how to help family, friends, colleagues and neighbours.

	Activity
3.1	16 Days of Activism: A programme poster was created highlighting partners' events across the boroughs. This included a social media campaign, an awareness raising film, Blooming Strong coffee mornings and an annual conference focusing on justice attended by over 50 professionals.
3.2	Anti-Slavery Day: To mark International Anti-Slavery Day, the Modern Slavery & Exploitation Partnership arranged a range of activities to raise awareness amongst residents. This includes stalls at community centres and an online social media campaign ran by the police.
3.3	Standing Together: Safety Across Faith and Ethnic Communities Project (SAFE): SAFE works with grassroots communities to end VAWG. Champions training has been delivered to community groups and social media campaigns were run. Over 100 people attended a conference promoting the project and network.

Priority 4: Practitioners

To lead on the development of good practice for professionals and will concentrate on providing a package of VAWG training and sector based support for practitioners alongside encouraging innovation in service delivery within a multi-agency context.

Activity	
4.1	Training: A range of training sessions have been arranged by partners to increase awareness of VAWG in the partnership, including:
	Angelou Partnership: 7 training sessions delivered to over 80 professionals.
	MARAC: 7 MARAC induction briefings delivered to 13 professionals.
	Ascent: A range of training sessions offered by Ascent partners, including on topics such as Harmful Practices, Sexual Violence, and Trauma.
	VAWG Training Brochure: A consolidated brochure was developed outlining training offered by a range of partners.
4.2	Domestic Homicide Reviews (DHR): The purpose of a DHR is to understand where there are lessons to be learned and make recommendations to prevent future homicides. Sadly, there are 10 DHRs across the three boroughs at various different stages of completion from 2015-2020 (K&C: 4, H&F: 3, WCC: 3) Work is underway on working towards the action plans of these DHRs. In addition, a DHR Task & Finish Group has been set up to develop a broader thematic action plan to capture the themes across all 10 DHRs. This group is also developing a DHR Best Practice Protocol outlining roles and responsibilities. This group arranged a DHR learning event which was attended by over 40 professionals to learn lessons from DHRs.
4.3	VAWG Newsletter: A quarterly VAWG partnership newsletter has been compiled outlining events, latest research and news, and a spotlight on services.
4.4	Pathfinder: Pathfinder looked to create a coordinated and whole health approach to domestic abuse, working across mental health, acute and community services. The one year project saw 20 GP surgeries receiving training and 37 referrals between Jul 19-Mar 20; quarterly meetings between health and domestic abuse professionals; review of domestic abuse policies, 180 NHS professionals received Level 2 and Level 3 domestic abuse training; a Domestic Abuse Ambassador programme sent up with over 60 recruits; and the domestic abuse coordinator's role in Chelsea and Westminster NHS foundation trust being made permanent.

Priority 5: Children & Young People

Children and young people who experience abuse are supported. The boroughs will prioritise both prevention of violence and abuse and provision of support.

	Activity	Outcome
5.1	Angelou supported 181 young women and girls and indirectly supported 950 children by supporting their non-abusive parent. 8 young people were supported around child sexual exploitation. In addition, the Young People's IDVA with Advance ran awareness sessions in schools and youth centres and with EPIC Young Mums Groups.	
5.2	Women and Girls Network (WGN): As part of the Angelou provision, WGN has supported 725 women, girls and professionals. Other WGN services supported 33 women and girls with long-term advocacy and casework. 83 girls under 18 accessed support via the London survivors gateway service. WGN delivered 3 awareness raising workshops at a girl's school in Westminster focusing on Healthy Relationships reaching 75 young women.	
5.3	Health Education Partnership: Preventative VAWG awareness training was delivered to 182 teachers across 12 primary and secondary schools in Westminster.	
5.4	Safe & Together: This model focuses on supporting social care in their response to domestic abuse by partnering with the non-abusive parent, holding the abusive parent to account and centering the needs of the child. This training was delivered to 70 multi-agency practitioners, a briefing was presented to 200 people at CLCH and 50 people at CNWL conference. 20 people have accessed 2-hour online module training.	
5.5	Local Safeguarding Children's Partnership (LSCP): The LSCP delivered a range of workshops on domestic abuse and harmful practices to over 200 professionals. The LSCP has promoted Operation Encompass, with 32 schools in LBHF, 29 schools in RBKC and 27 schools in Westminster registering interest. Work is being undertaken to better understand challenges experienced by practitioners in addressing DA in each borough to improve practice. In addition, the LSCP has endorsed Safe & Together and is coordinating training delivery for FCS staff and multi-agency partners in 20/21.	

Priority 6: Perpetrators

The three borough VAWG Partnership will ensure that perpetrators of all forms of VAWG are held to account and are supported to reform.

	Activity	Outcome
6.1	Richmond Fellowship: Al-Aman, which is funded from a number of sources, supported 79 women during the period. The Family Court team, which provides criminal justice support, received 5 spot funded referrals from K&C, 1 from H&F and 1 from WCC; the perpetrator intervention programme received 6 spot funded referrals from K&C, 20 from H&F and 5 from WCC; and the YUVA service and children's therapeutic service received 1 referral.	
6.2	For Baby's Sake (FBS): FBS provides support for families from pregnancy until the child is two, where at risk levels of harm are low. Since 2015 they have worked with 75 women, 68 men and supported 57 children and 79 babies.	
6.3	Much anticipated national research and data has been published highlighting best practice in perpetrator approaches. Locally, a steering group will be set up with incorporate this in our local approach ensure consistency and alignment with best practice.	

Priority 7: Justice & Protection

The VAWG Partnership will deliver justice and protection for survivors and their families according to their needs within a criminal and civil justice framework and also within a wider social context.

	Activity	Outcome																																			
7.1	<p>Criminal Justice Response to DA and Sexual Violence: Below are the details of domestic abuse offences, incidents and sanctions detections and sexual violence offences and sanctions detections:</p> <table border="1" style="width: 100%; border-collapse: collapse; margin-bottom: 10px;"> <thead> <tr> <th style="width: 15%;">2019/20</th> <th style="width: 20%;">DA Offences</th> <th style="width: 20%;">DA Incidents</th> <th style="width: 45%;">DA Sanction Detections</th> </tr> </thead> <tbody> <tr> <td>WCC</td> <td>2252</td> <td>3658</td> <td>264</td> </tr> <tr> <td>LBHF</td> <td>1874</td> <td>3251</td> <td>145</td> </tr> <tr> <td>RBKC</td> <td>1335</td> <td>2177</td> <td>299</td> </tr> <tr> <td>Total</td> <td>5641</td> <td>9086</td> <td>708</td> </tr> </tbody> </table> <table border="1" style="width: 100%; border-collapse: collapse;"> <thead> <tr> <th style="width: 15%;">2019/20</th> <th style="width: 20%;">SV Offences</th> <th style="width: 65%;">SV Sanction Detections</th> </tr> </thead> <tbody> <tr> <td>WCC</td> <td>1189</td> <td>29</td> </tr> <tr> <td>LBHF</td> <td>472</td> <td>37</td> </tr> <tr> <td>RBKC</td> <td>387</td> <td>70</td> </tr> <tr> <td>Total</td> <td>2048</td> <td>136</td> </tr> </tbody> </table>		2019/20	DA Offences	DA Incidents	DA Sanction Detections	WCC	2252	3658	264	LBHF	1874	3251	145	RBKC	1335	2177	299	Total	5641	9086	708	2019/20	SV Offences	SV Sanction Detections	WCC	1189	29	LBHF	472	37	RBKC	387	70	Total	2048	136
2019/20	DA Offences	DA Incidents	DA Sanction Detections																																		
WCC	2252	3658	264																																		
LBHF	1874	3251	145																																		
RBKC	1335	2177	299																																		
Total	5641	9086	708																																		
2019/20	SV Offences	SV Sanction Detections																																			
WCC	1189	29																																			
LBHF	472	37																																			
RBKC	387	70																																			
Total	2048	136																																			
		<table border="1" style="width: 100%; border-collapse: collapse; margin-top: 10px;"> <caption>DA SDs</caption> <thead> <tr> <th>Year</th> <th>DA SDs</th> </tr> </thead> <tbody> <tr> <td>2017-18</td> <td>~1350</td> </tr> <tr> <td>2018-19</td> <td>~1050</td> </tr> <tr> <td>2019-20</td> <td>708</td> </tr> </tbody> </table> <table border="1" style="width: 100%; border-collapse: collapse; margin-top: 10px;"> <caption>SV SDs</caption> <thead> <tr> <th>Year</th> <th>SV SDs</th> </tr> </thead> <tbody> <tr> <td>2017-18</td> <td>~175</td> </tr> <tr> <td>2018-19</td> <td>~130</td> </tr> <tr> <td>2019-20</td> <td>136</td> </tr> </tbody> </table>	Year	DA SDs	2017-18	~1350	2018-19	~1050	2019-20	708	Year	SV SDs	2017-18	~175	2018-19	~130	2019-20	136																			
Year	DA SDs																																				
2017-18	~1350																																				
2018-19	~1050																																				
2019-20	708																																				
Year	SV SDs																																				
2017-18	~175																																				
2018-19	~130																																				
2019-20	136																																				
7.2	<p>H&F Impact Project: A specialist criminal justice IDVA provides support to survivors, from reporting to case closure even sitting in court with survivors whilst giving evidence. They are co-located at the police station and the specialist domestic abuse courts and offer expert advice and guidance to criminal justice partners in the police, probation, CPS and the judiciary. 105 women were supported (96% of those contacted engaged in support) 55 children were indirectly supported.</p>																																				
7.3	<p>Specialist Domestic Abuse Courts: The three boroughs benefit from a nationally recognised model. The percentage of defendants convicted at the courts have risen from 70% from 2018-19 up to 80% this financial year. The percentage of defendants who made early guilty pleas at the also increased slightly from 40% from 2018-19 up to 42%. There are some concerns about maintaining the high level of work undertaken in partnership with HMCTS. This has been flagged at the various operational groups and the priority is to continue to deliver best practice in partnership.</p>																																				
7.4	<p>Victim Support London Victim and Witness Service (LVWS): LVWS is available to offer initial support and information to anyone affected by crime. The table below shows the number of people supported by this service in 2019-20:</p> <table border="1" style="width: 100%; border-collapse: collapse; margin-top: 10px;"> <thead> <tr> <th style="width: 25%;">H&F</th> <th style="width: 25%;">K&C</th> <th style="width: 25%;">WCC</th> <th style="width: 25%;">Total</th> </tr> </thead> <tbody> <tr> <td>791</td> <td>586</td> <td>692</td> <td>2069</td> </tr> </tbody> </table>		H&F	K&C	WCC	Total	791	586	692	2069																											
H&F	K&C	WCC	Total																																		
791	586	692	2069																																		

4. Challenges and Opportunities:

The 2019-20 period presented some challenges for the partnership but also some opportunities for our response to VAWG going forward:

Challenges:

COVID-19

The end of the 2019-20 period saw the outbreak of the coronavirus. This has had a major impact on survivors' experiences of abuse and on the capacity of services to provide support as the country went into lockdown. The pandemic has increased need and the complexity of cases, putting additional strain on services already working at capacity. COVID-19 poses a significant risk to the VAWG sector and 2020-21 will see a number of associated challenges which the VAWG Partnership will need to address.

Funding for services

Funding for VAWG provision needs to be consistent and sustainable. Pre-COVID-19, frontline services highlighted gaps in provision, which have been compounded by the pandemic. There is a need for statutory services to pool resources to better respond to existing and new need.

Wider VAWG response

The response to VAWG is still primarily focused on domestic abuse. There is a need to do more work across the different strands, such as sexual violence and harmful practices.

Opportunities:

The CCR Model:

The three boroughs work as part of a coordinated community response which highlights that ending VAWG is everyone's responsibility. The CCR brings services together to ensure local systems keep survivors safe, hold abusers to account, and prevent abuse. This model focuses on the role played by statutory and specialist services, businesses, neighbours, family and friends in ending VAWG. Continuing to operate under this model will provide the VAWG partnership with a robust framework to respond to, and end VAWG.

Spotlight on VAWG:

COVID-19 has placed a national and local spotlight on VAWG resulting in an increase in awareness and highlighting the need for a CCR response. An emphasis will be placed on sustaining the increase in professional and community interest to strengthen the work of the VAWG partnership going forward.

VAWG Strategy:

The current VAWG strategy and addendum is coming to an end and a new strategic approach is being developed collaboratively with partners. This will provide an opportunity to centre VAWG and strengthen our CCR approach.

5. Survivor Experiences:

Below is feedback from survivors on their experience of receiving support in the three boroughs:

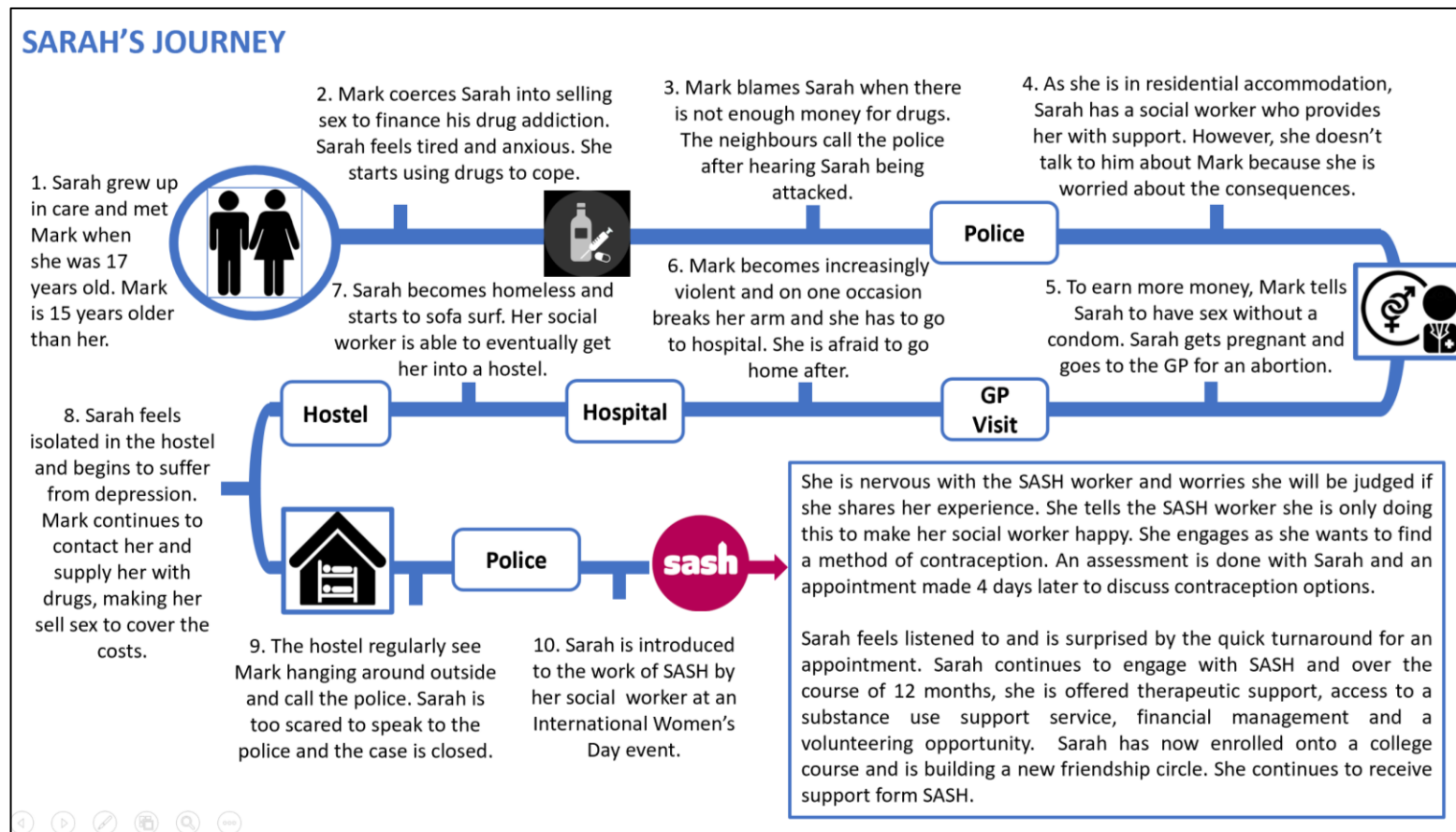
“My favourite part was being able to talk to someone who understands where I am coming from.”

“There should be no cut-off for support – it should be flexible.”

“More training is needed for police, health, social services - all statutory agencies.”

“A big campaign is needed to educate about reality of abuse.”

The following diagram shows Sarah’s journey to receiving support. It highlights the opportunities for support from a range of services and how we can improve our VAWG response if we work better together as part of our Coordinated Community Response:



6. Priorities for 2020-21

Priority	Agreed Action	Action Update	Action Impact	RAG
Access	Monitor performance of both specialist and statutory services and data collection.	<ul style="list-style-type: none"> Contract monitoring meetings held with specialist services with targets being met. A VAWG data dashboard to be developed. 	Evidence has been gathered measuring the impact of VAWG work and plans are underway to better collect and measure data.	
	Increase access locations through outreach workers available at various community and mainstream settings.	<ul style="list-style-type: none"> Work underway to streamline Pan-London provision with local pathways. Additional funding received from VRU (health) and MHCLG (housing). The Community Safety Teams to put the VAWG services out for tender. Develop a commissioning strategy 	Emphasis is placed on not duplicating services, ensuring appropriate services are commissioned and gaps in provision picked up from Pan-London and National services.	
	Ensure services are available and accessible in light of COVID-19	<ul style="list-style-type: none"> Identify additional funding for services Coordinate briefings and communication strategies to highlight support services. 	Survivors and professionals are aware of support available during lockdown and services are accessible.	
Response	Promote coordinated, needs led (in addition to risk led) provision and service modelling in both specialist and mainstream services.	<ul style="list-style-type: none"> All three boroughs have signed up to DAHA (Domestic Abuse Housing Alliance) accreditation. SafeLives independent report into long term, needs led support through MSWTA to be published. 	Work is focusing on 'system wide change' ensuring mainstreaming of VAWG work across the partnership.	
	Ensure that victims and survivors can influence service development by including survivors' voices in all consultation for commissioned services and strategic processes.	<ul style="list-style-type: none"> Survivor's to be consulted for commissioning of VAWG provision Plans to create an ongoing expert through experience steering group. 	Survivors voices and experiences shape the direction of VAWG work.	
	Develop a VAWG Strategy setting out the strategic priorities for the VAWG Partnership.	<ul style="list-style-type: none"> Development of the strategy paused and to be picked up once lockdown eases. 	A VAWG strategy which sets out the VAWG Partnership's strategic approach to ending VAWG as part as a CCR.	

Community	Develop a communications plan to ensure coverage of priority VAWG areas and deliver a series of campaigns and community engagement events.	<ul style="list-style-type: none"> • A series of events and campaigns to be held over 2020-21. • A campaign to be run to raise awareness of support during COVID-19. 	Ending VAWG being 'everyone's business' is clearly communicated, and awareness is raised.	
	Work with local business, British Transport Police, the night-time economy, and community policing teams to respond appropriately, hold perpetrators to account and, counter sexual harassment on transport, streets and in public/private spaces.	<ul style="list-style-type: none"> • Sign up to the Pan-London Night Time Economy Charter. • Work with businesses and local partners to raise awareness of VAWG as part of the CCR. 	The three boroughs are linked in with Pan-London best practice. The three boroughs are safer for residents.	
Practitioners	Centralise and improve VAWG training across the three boroughs to increase workforce confidence in identifying and responding to VAWG-related issues.	<ul style="list-style-type: none"> • VAWG Partnership Training Task and Finish group created; • Developed a training brochure. 	Professionals are trained in understanding and responding to VAWG.	
Children and Young People	Promote a 'whole family' approach by supporting children and their non-abusive parent/guardian.	<ul style="list-style-type: none"> • Safe & Together Model adopted by all three boroughs improving responses in FCS. 	Professionals 'partner' with the non-abusive parent and hold perpetrators to account.	
	Address current gap in services by developing specialist support, advocacy and therapeutic services to children and young people who are experiencing abuse.	<ul style="list-style-type: none"> • Embed Joint Working Protocol developed with LSCP; • Specialist services working with schools in a preventative capacity. • Operation Encompass taking place in schools. 	Children and young people experiencing VAWG are better supported. Continued partnership working with FCS.	
Perpetrators	Maximise opportunities to engage with, challenge and give perpetrators opportunity to change their behaviours whilst holding them accountable.	<ul style="list-style-type: none"> • Create a working group to develop a local position on perpetrator response. • Identify funding for perpetrator work. 	Work is being developed to better coordinate a response to perpetrators of VAWG.	
Justice & Protection	Seek justice for victims and develop services which are victim-centred to empower victim-survivors and improve their experience of the criminal justice system.	<ul style="list-style-type: none"> • The Impact project in H&F • Specialist working taking place in SDVCs. 	Survivors are supported to access justice through the CJS.	