

NSPCC

Working with faith communities to prevent abuse and neglect: challenges and opportunities

Shirley Maginley

NSPCC Consultant, Faith and Minority Ethnic Communities

EVERY CHILDHOOD IS WORTH FIGHTING FOR

-
- **Snapshot of major faith communities in the UK and Tri-borough**
 - **Challenges and opportunities for engaging with faith groups**
 - **Introduction to the NSPCC Multi-faith Safeguarding Hub**
 - **The role of faith communities in preventing child neglect**



Defining faith community

The term **'faith community'** is used to encompass any setting where religious beliefs give direction to an activity or way of life. It may be applied to a formal place of worship, individuals, groups or organisation affiliated to a particular faith.



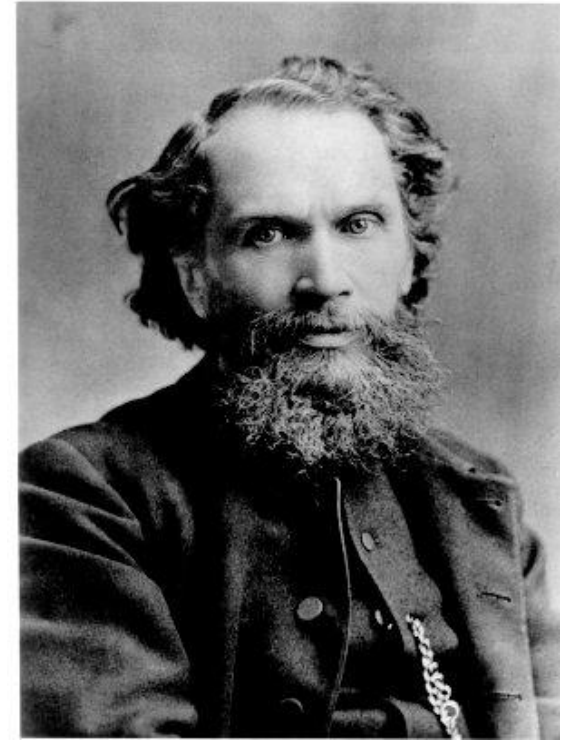
Child Welfare in the UK



Dr. Thomas Barnardo
1867



Rev. Thomas Stephenson
1869



Rev. Benjamin Waugh
1884

Major faith communities in the UK and Tri-borough



Trends in Religious Affiliation in the UK

RELIGIOUS AFFILIATION IN BRITAIN			
	2004	2010	Change (%)
Christian	45million	41million	-7.6
No religion	9million	13.4million	+48.7
Muslim	1.9million	2.6million	+36.7
Hindu	550,000	790,000	+43.0
Sikh	336,000	340,000	+1.2
Jewish	272,000	270,000	-1.0
Buddhist	160,000	270,000	+74.0
Other religion	390,000	610,000	+57.4

Source: ONS Labour Force Survey

Religious Affiliation in the Tri-borough

Religion	LBHF	RBKC	WCC
Christian	54.1	54.2%	45.0%
Muslim	10.0	10.0%	18.0%
Jewish	0.6	2.1%	3.3%
Buddhist	1.1	1.5%	1.5%
Hindu	1.1	0.9%	1.9%
Sikh	0.2	0.2%	0.2%

Census 2011 (ONS)

Children subject to child protection plan in 2012

Ethnic group	% in population	% subject to Child Protection Plan	% subject to Serious Case Reviews
White	85.12%	75.9%	80%
Mixed	3.6%	7.9%	6%
Asian	6.8	5.4%	4%
Black	3.6%	4.9%	8%
Have recorded disability	6%	3.3%	12%

Data for the year ending 31st March 2012, Department for Education (2013) and Office for National Statistics (2012)

Safeguarding children and young people within faith settings



Secure

Safe



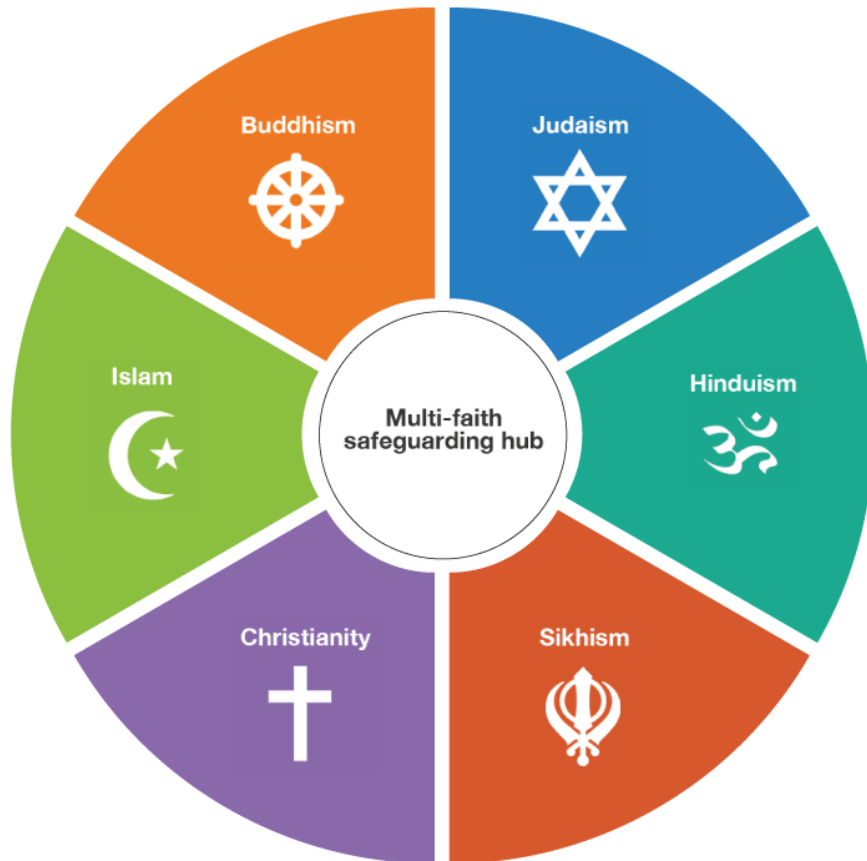
Healthy



Some current challenges

- Understanding belief systems which may or may not be consciously shaped by faith and religion but may influence the effective protection of children.
- Identifying and enlisting the support of leaders or central bodies to facilitate or influence safeguarding good practice
- Getting faith groups to look beyond criminal records checks to develop other areas of safeguarding practice, i.e safer recruitment, emerging forms of abuse, neglect.
- Knowing how best to use the learning and intelligence gained from faith communities to meet the needs of vulnerable children in the communities.

Multi-faith Safeguarding Hub



- Personal video statements
- Stories and texts
- Case scenarios
- Examples of good practice
- Information, resources and events
- Specialist organisations

Films from the Multi-faith Safeguarding Hub

Buddhism



Christianity



Hinduism



Islam



Judaism



Sikhism



**Do faith
communities
have a role in
preventing
neglect?**



Opportunities for faith communities to prevent neglect

- Speak out against all forms of harm and abuse of children and emphasise that harming a child is not condoned in their religion.
- Ensure that neglect is defined in child protection policies and the signs and risk factors are outlined so they can be spotted early.
- Promote education and training on neglect. Invite professionals to speak on the subject matter to community members.

Opportunities for faith communities to prevent neglect

- Provide practical help and support for parents who are struggling – parent groups, childcare facilities, materials, safe space for children to play and learn.
- Create the opportunities for parents and carers to share problems and work towards managing those problems at an early stage, e.g. pastoral support and befriending schemes
- Enable access to help from professional services
- Lend their voice and influence to the campaign to raise awareness of neglect, e.g. use religious media (including social media).

Community Engagement



Cartoon courtesy of Regina Faul-Doyl

Consider:

- What is your model of participation?
- What is the most suitable method for engagement?
- How does the group want to engage?
- What is the capacity of the group?
- What resources are available?
- What information, training or skills you require?
- What leverage might you have?

The point of connection

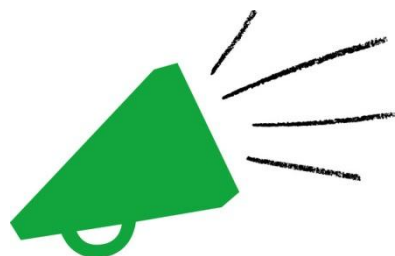


Questions and discussion:

What may be a point of **connection** to raise awareness of child neglect and meet the needs/concerns of the local faith, minority ethnic or community group you want to engage?

What opportunities might there be for engagement?





Thank you!

Shirley Maginley,

Consultant, Faith and Minority Ethnic Communities

Email: smaginley@nspcc.org.uk

Telephone: 07879 113537