



Local Safeguarding
Children Partnership

Hammersmith & Fulham | Kensington and Chelsea | Westminster

Safeguarding Children Partnership Arrangements

for Hammersmith & Fulham, Kensington and Chelsea, Westminster.

June 2019



Table of Contents

Foreword	3
Background	4
Geographical arrangements	4
Arrangements for the safeguarding partners to work together	5
LSCP Structure	6
LSCP Priorities	7
Learning from and commissioning child safeguarding practice reviews and other reviews	8
Multi-agency safeguarding children training	9
Voice of the Child	11
Professional Challenge and escalation	11
Arrangements for the independent scrutiny	11
How all early years settings, schools, and other educational establishments will be included in the safeguarding arrangements	12
How any residential homes for children will be included in the safeguarding arrangements	13
Safeguarding Children Threshold Document	13
Safeguarding partners annual report	13
Working with other partnership boards	14
Funding arrangements	14
References and further links	14
Appendices	14

Foreword

In this document, we have set out how the Safeguarding Partners and other key partners such as local schools and education providers will work together to keep all children and young people in our area safe.

These new arrangements are in response to the Children and Social Work Act 2017.

We want to ensure that all children living in our area can grow up in circumstances consistent with the provision of safe and effective care.

We are very keen to hear the voices of children and young people and will achieve this by asking them for their views and letting them know what our Safeguarding Partnership is doing as a result.

We believe that safeguarding children is everyone's responsibility and want to ensure that all our local partners join us in working together to achieve this.

This document sets out the governance arrangements for our new multi-agency safeguarding arrangements. We will review these arrangements regularly to ensure that they remain fit for purpose.



Kim Smith
Chief Executive
Hammersmith & Fulham Council



Barry Quirk
Chief Executive
Royal Borough of Kensington and Chelsea



Stuart Love
Chief Executive
Westminster City Council



Helen Harper
Chief Superintendent
Central West Basic Command Unit



Diane Jones
Chief Nurse and Director of Quality
North West London Collaboration
Of Clinical Commissioning Groups

Background

Following the Children and Social Work Act 2017, the revised statutory guidance 'Working Together to Safeguard Children 2018' specifies that all local areas must publish the multi-agency arrangements for safeguarding children, to be led by the three Safeguarding Partner agencies. These partners are:

- the local authority
- clinical commissioning group
- the police

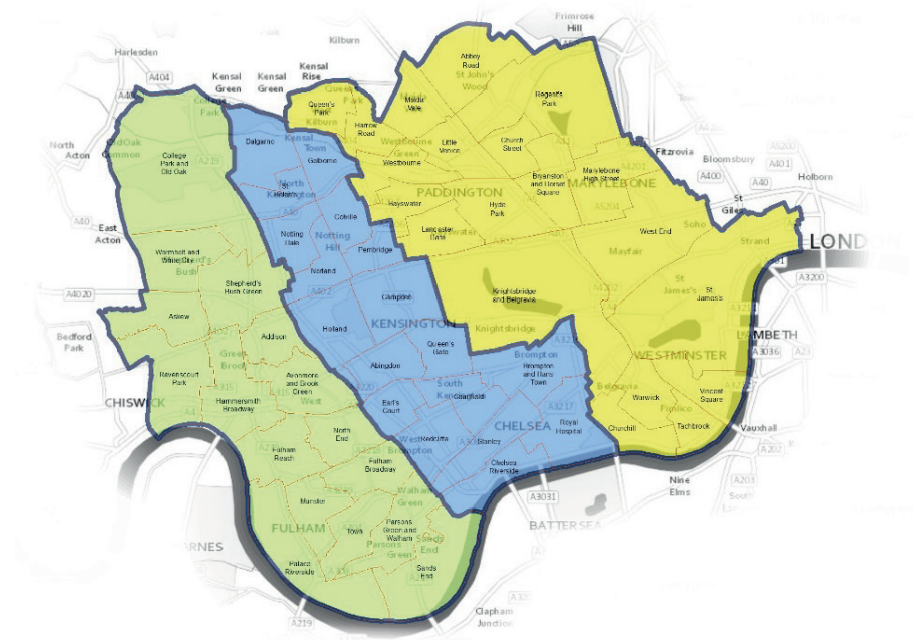
The purpose of these arrangements is to support and enable local organisations and agencies to work together in a system where:

- children are safeguarded and their welfare promoted
- partner organisations and agencies collaborate, share and co-own the vision for how to achieve improved outcomes for vulnerable children
- organisations and agencies challenge appropriately and hold one another to account effectively
- there is early identification and analysis of new safeguarding issues and emerging threats
- learning is promoted and embedded in a way that local services for children and families can become more reflective and implement changes to practice
- information is shared effectively to facilitate more accurate and timely decision making for children and families

The Safeguarding Partners have come together to form the Local Safeguarding Children Partnership, following consultation with the previous Local Safeguarding Children Board.

Geographical Arrangements

The Local Safeguarding Children Partnership will cover the three local authorities of Hammersmith & Fulham Council, Royal Borough of Kensington and Chelsea, and Westminster City Council. The local Police Central West Basic Command Unit covers this area and the Clinical Commissioning Groups commission health services in each of the three local authorities.



© Crown copyright and database rights 2016 OS 100021668

Arrangements for the safeguarding partners to work together

The Local Safeguarding Children Partnership will replace the previous Local Safeguarding Children Board.

Membership

We will revise our membership to ensure we have the right representation from local agencies who work together to safeguard children and young people in our area. The list of members will be revised over time to reflect any changes to those present in our local footprint.

The core membership will include the three statutory partners (local authorities, clinical commissioning groups and police) and the following:

- Imperial Healthcare Trust
- Chelsea & Westminster NHS Trust
- Central London Community Health Trust
- Central North West London NHS Trust
- West London NHS Trust
- Probation
- Community Rehabilitation Company
- Community Safety
- VAWG
- Schools Representatives
- Designated Nurse
- Designated Doctor
- Public Health
- Housing
- Adults Social Care
- Voluntary Sector Representatives
- Education Sector Representatives
- Lay Members

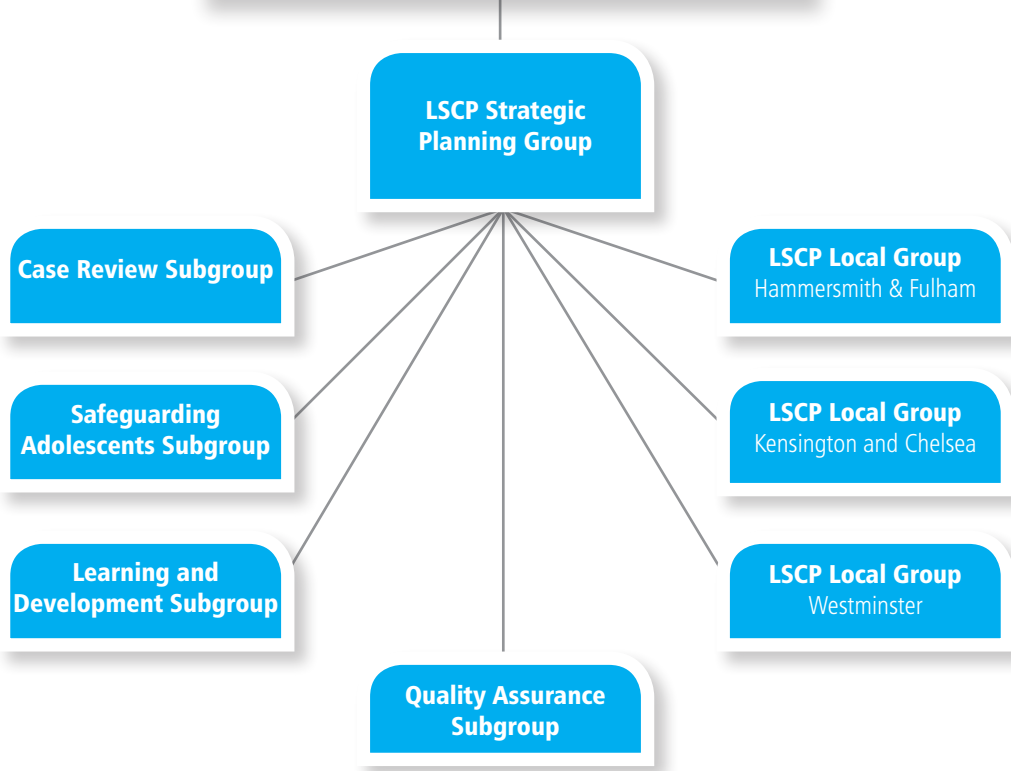
The partners (opposite) will meet once a quarter to review the work of the partnership and the subgroups and any new and emerging themes and concerns. The partners attending must be from leadership level and be able to:

- Speak with authority for the agency or organisation they represent
- Take decisions on behalf of their agency or organisation
- Hold their own agency or organisation to account
- Give delegated authority to anyone attending in their place

The LSCP will also have the flexibility to co-opt other relevant professionals to attend in order to discuss certain agenda items as and when appropriate.

We are proposing to have additional virtual members, who will receive all the LSCP papers and be called in to attend meetings where relevant. They will include the following partners:

- Royal Brompton and Harefield NHS Trust
- London Fire Brigade
- CAFCASS
- NHS England
- Wormwood Scrubs Prison
- Chairs of the Safeguarding Adults Boards
- Chairs of the Community Safety Partnerships
- Chairs of the Health and Wellbeing Boards



Other strategic partnerships the LSCP will liaise with



Local Safeguarding Partnership Structure

The Local Safeguarding Children Partnership (including the members listed on page five) will meet once a quarter to review the work of the LSCP subgroups and identify any new and emerging safeguarding concerns.

The Lead Safeguarding Partners, who hold ultimate responsibility for the safeguarding plan, will attend the Local Safeguarding Children Partnership a minimum of twice a year in order to review progress of the safeguarding plan, take decisions and consult with the wider partnership where necessary.

The LSCP Strategic Planning Group, comprising of the chairs and co-chairs of the subgroups, will meet quarterly to lead the strategic development of the LSCP and its subgroups. The LSCP Strategic Planning Group will recommend the LSCP priorities.

Priorities

The Safeguarding Partners have identified the following priorities that we are working towards. These will be reviewed on an annual basis:



The Safeguarding Partners have agreed to retain some of the subgroups from the previous Local Safeguarding Children Board.

The previous Chairs' Subgroup will be renamed the LSCP Strategic Planning Group and will have an enhanced role:

LSCP Strategic Planning Group

The Strategic Planning Group members will include the LSCP subgroup co-chairs and the LSCP Independent Chair. The subgroup will, on behalf of the Safeguarding Partners, agree the strategic direction for the LSCP and identify local priorities for the Safeguarding Partnership. The group will also identify any new and emerging safeguarding concerns and bring these to the attention of the Safeguarding Partners and the wider LSCP.

The Strategic Planning Group will:

- agree a quarterly theme, linked to our LSCP priorities to be discussed and scrutinised across each of the LSCP subgroups and then discussed at the LSCP meeting
- monitor the implementation of the LSCP safeguarding plan and the production of the LSCP Annual Report
- maintain effective links to other local partnerships, such as the Health and Wellbeing Boards, Community Safety Partnerships and Violence Against Women and Girls Partnerships in order to identify shared priorities and agree areas of bespoke work
- review and report on the LSCP budget to the Safeguarding Partners and the wider LSCP
- be responsible for maintaining the Local Safeguarding Children Partnership Arrangements and publishing any updates to this document where relevant

The LSCP priorities and related safeguarding plan will be implemented by the LSCP which will meet quarterly. The work of the LSCP Strategic Planning Group will be reviewed when the three lead Safeguarding Partners attend the LSCP biannually.

Case Review Subgroup

This subgroup will review local cases presented by partners. It will oversee the rapid review process and make a recommendation about whether to proceed to a child safeguarding practice review or other form of review.

The subgroup will also produce a Learning Review newsletter to disseminate the learning to partners.

Learning from and commission child safeguarding practice reviews

The partnership is committed to learning from child safeguarding practice reviews, including both local and national reviews.

Our Case Review Subgroup will be responsible for reviewing local incident notifications to the national Child Safeguarding Practice Review Panel (the National Panel) from across the three local authorities and ensuring that Rapid Reviews are conducted in line with the statutory guidance in 'Working Together to Safeguard Children 2018'.

When safeguarding partners determine whether to conduct a local child safeguarding practice review, they will consider whether a case:

- Highlights or may highlight improvements needed to safeguard and promote the welfare of children, including where those improvements have been previously identified
- Highlights or may highlight recurrent themes in the safeguarding and promotion of the welfare of children
- Highlights or may highlight concerns regarding two or more organisations or agencies working together effectively to safeguard and promote the welfare of children
- Is one which the Child Safeguarding Practice Review Panel have considered and concluded a local review may be more appropriate

Where the safeguarding partners decide to conduct a further practice review, the Case Review Subgroup will be responsible for commissioning a suitable review author and determining the membership of the review group who will have oversight of the practice review. The Case Review Subgroup will also monitor the actions or improvement plans arising from a practice review or other local review.

The Case Review Subgroup will liaise with the National Panel if there is a local case that is selected for a national child safeguarding practice review. These are cases which raise issues of complex and national importance.

When a local safeguarding practice review is completed, it will be shared with the National Child Safeguarding Practice Review Panel and the Secretary of State and to Ofsted no later than seven days ahead of publication.

Learning from practice reviews will be disseminated to local partner agencies via members from the Case Review Subgroup. The Case Review Subgroup will also circulate the learning via the Learning Newsletter that will be distributed to partner agencies and will be found on our Local Safeguarding Children Partnership website. Learning will be communicated to other partnership boards where applicable, such as the Violence Against Women and Girls (VAWG Board) and the two local Safeguarding Adults Boards and the three Health and Wellbeing Boards.

The learning will also be incorporated into the multi-agency safeguarding training programme. The training programme includes workshops on 'Learning from Child Safeguarding Practice Reviews' and a key segment of the learning from recent reviews is always included in our core training workshop 'Safeguarding Children and Child Protection'.

Learning and Development Subgroup

The Local Safeguarding Children Partnership remains committed to sharing multi-agency safeguarding training and learning that all local partners may access. This subgroup is responsible for overseeing the delivery of a multi-agency safeguarding training programme. This will be informed by our training strategy and an annual training needs analysis completed by partners. The subgroup will also be responsible for maintaining the Learning and Improvement Framework for the safeguarding partnership.

Multi-agency safeguarding children training

The content of the training programme will reflect learning from local and national child safeguarding practice reviews, changes to statutory guidance and legislation, the London Child Protection Procedures, as well as any learning from local single and multi-agency audits. The learning will also incorporate the voice of child where appropriate.

We will continue to ensure that where possible, safeguarding training is co-delivered by local agencies in order to maximise the sharing of local knowledge and experience.

The subgroup will monitor the impact of training, which will be reviewed via both pre-and post-training workshop evaluations from delegates and their managers.

Safeguarding Adolescents Subgroup

This subgroup will work to develop strong multi-agency engagement with the social, economic and environmental 'contexts' within which adolescent risk, harm and vulnerability can occur. We will bring assessments of the various safeguarding concerns together, preventing siloed responses to complex needs.

We will develop an understanding of the contexts within which abuse/exploitation/neglect is taking place for adolescents and address safeguarding from a contextual safeguarding perspective.

We will develop joined up multi-agency responses between all services working with adolescent safeguarding and address any transitions issues for adolescents moving between children's and adult services.

We will seek to develop the Local Safeguarding Children Partnership's work with all agencies (public and private sector), including those engaged in the night time economy, fast food services, transport services and hotelier services to develop preventative interventions reducing harm experienced by adolescents.

Quality Assurance Subgroup

The subgroup will monitor and challenge the performance information submitted by partners. The subgroup will also help to identify new and emerging concerns.

Data set

We will review an agreed core set of safeguarding children data and performance activity from local partners and present an exceptions report to the Safeguarding Partnership on a quarterly basis. The data set will include data from early help through to statutory intervention. We will also take the opportunity to consider emerging areas of concern and seek relevant data to help inform our knowledge and understanding of these.

The Quality Assurance Subgroup will also scrutinise the partnership data available on a given theme, as directed each quarter by the Strategic Planning Group.

Multi-agency audits

We will agree an audit programme based on local priorities and emerging needs identified by the LSCP Strategic Planning Group. We will oversee two multi-agency audits per year and coordinate the actions for partners to take as a result of audit findings to ensure that the learning is embedded into practice.

Single-agency audits

We will share the learning from relevant single agency audits, including from any quarterly theme identified by the LSCP Strategic Planning Group. We will coordinate a programme of Section 11 audits to test local organisations' safeguarding arrangements and the knowledge and confidence of practitioners on a range of safeguarding topics in order to further inform the work of the LSCP.

LSCP Local Group for each local authority

Our Local Safeguarding Children Partnership will span three local authority areas. We have agreed to maintain a local focus in each local authority area via an LSCP Local Group.

The three groups will share relevant LSCP and local updates from partners working in their respective areas. The LSCP Local Groups will be a forum for problem solving issues at a local level and raising issues up to the LSCP where necessary.

The three LSCP Local Groups will be a key forum to examine the quarterly themes that are set by the LSCP Strategic Planning Group. The LSCP Local Groups will seek feedback from frontline practitioners from across the safeguarding partnership, as well as the voice and experience of children in relation to a set topic each quarter.

CDOP: Child Death Overview Panel

In line with the Child Death Review Statutory and Operational Guidance 2018, new arrangements are being put in place for our local Child Death Review Overview Panel. Our local Child Death Partners (the local authorities and Clinical Commissioning Groups) are working in conjunction with neighbouring partners with the aim to create a CDOP panel that will cover the eight north west London boroughs of Harrow, Hillingdon, Hounslow, Brent, Ealing, Hammersmith & Fulham, Kensington and Chelsea and Westminster.

The revised CDOP over a larger geographical footprint will enable effective thematic learning from reviews and may identify modifiable factors that could be altered to prevent future child deaths. Most importantly, the revised CDOP will also ensure that bereaved families receive clear, sensitive, timely communication and access to appropriate bereavement support.

The revised CDOP will report to the Child Death Partners and the annual report will be shared with the Local Safeguarding Children Partnership.

Voice of the child

The voice of the child will be a key thread across all our work and each subgroup will be required to highlight how it has considered this in the quarterly update to the Partnership. The voice of the child will also be further incorporated into the multi-agency safeguarding training that we provide.

The safeguarding partners will recruit a Children and Communities Engagement Officer. Their role will be to assist in seeking the voices and experiences of children and young people across the three local authority areas in relation to safeguarding matters.

The Children and Communities Engagement Officer will liaise with the relevant Children in Care Councils, Youth Parliaments and other local forums that our resident children contribute to.

The Children and Communities Engagement Officer will develop a cohort of young people who will act as our Young Scrutineers. They will be invited to scrutinise our local priorities and actions towards addressing these. We will also engage children and young people to scrutinise our annual report and help draft a version specifically for children and young people. We will consult with children and young people when developing any new partnership priorities.

Professional Challenge and escalation

The safeguarding partners remain committed to resolving any professional challenges locally. We will keep a log of the main challenges raised.

If there are occasions where an agreement cannot be reached, agencies should follow the Local Safeguarding Children Partnership escalation protocol.

Independent Scrutiny

The Local Safeguarding Children Partnership is committed to independent scrutiny of the effectiveness of our local arrangements.

In our first year, we will retain an Independent Chair to oversee and challenge our work. The Independent Chair will:

- Ensure that the three lead Safeguarding Partners of the LSCP are fully engaged with their role in funding, enacting and reporting on safeguarding children within the three boroughs
- Meet at an agreed annual frequency with the three lead Safeguarding Partners
- Scrutinise the role of agencies in the partnership to ensure full engagement with safeguarding activities including information sharing, resource allocation, staff training, proactive identification of safeguarding concerns and reporting on activities
- Account for progress against the LSCP terms of reference
- Ensure that the terms of reference are understood by partner agencies

Review and monitor the LSCP annual priorities:

- o ensuring that they are evidence based
 - o monitoring that they are fit for purpose in light of current and new developments
 - o ensuring that they are accompanied by a robust business plan
 - o Ensuring that the business plan is implemented within the agreed timescales
- Ensuring that the LSCP has the appropriate subgroups and task and finish groups responding to the changing safeguarding contexts and events
 - Scrutinising subgroups aims and objectives to ensure they are in line with priorities and flexible to respond to emerging issues
 - Receiving and reviewing minutes from subgroups and task and finish groups, including scrutinising attendance from the range of partners to subgroup meetings and activities

- Checking for partners' attendance at the quarterly Partnership meeting and following up with any partners whose attendance is not consistent
- Ensuring that case reviews, including child safeguarding practice reviews are conducted in line with guidance, that learning is disseminated across all partner agencies

We will also strengthen the role of our Lay Members and empower them to be good critical friends and scrutinise and challenge, particularly in our subgroups.

We will work with the LSCP Children and Community Engagement Officer to develop the role of Young Scrutineers, who will assist us in checking that our work considers the views of children and young people.

In time, we may commission a peer review of our local safeguarding arrangements to ensure that we are performing effectively.

How all early years settings, schools, and other educational establishments will be included in the safeguarding arrangements

Across the three local authorities, we have the following education providers:

Local Authority	LBHF	RBKC	WCC
Primary Schools	37	27	41
Secondary Schools	12	6	12
Special Schools	5	2	3
Alternative Provision	1	2	1
Independent Schools	24	29	19
Children's Centres	7 main centres	2 Children Centre Hubs	3 hubs
Early Years Settings (childcare on non-domestic premises)	75	72	89
Childminders	97	36	69

A headteacher from each local authority attends the Local Safeguarding Children Partnership. There are headteacher representatives attending each of the Local Authority Partnership Groups. These headteachers will consult with the existing headteacher forums in each of the three local authorities.

The Local Authority Safeguarding Leads for Schools and Education attend a number of key subgroups, including the Case Review Subgroup, the relevant LSPC Local Group and Safeguarding Adolescents Subgroup in order to bring a perspective from local education providers. The Local Authority Safeguarding Leads for Schools and Education will also attend the quarterly LSCP meetings. The LSCP Business Manager also attends the regular termly Designated Safeguarding Leads forums in each local authority to share LSCP updates and seek feedback.

A local authority early years lead attends the Learning and Development Subgroup to bring a perspective from early years providers. The LSCP Business Manager will attend regularly the private, voluntary and independent (PVI) early years manager forums in each local authority in order to raise awareness of safeguarding matters there and seek feedback on behalf of the LSCP.

How any residential homes for children will be included in the safeguarding arrangements

Across the three local authorities, we have the following residential homes for children:

Local Authority	LBHF	RBKC	WCC
Residential Homes	1	1	0

The safeguarding partnership will ensure that these providers are engaged with the local safeguarding arrangements and priorities via the responsible commissioners.

Safeguarding Children Thresholds Document

The safeguarding partners will publish a Thresholds Document, as per the requirements in 'Working Together to Safeguard Children 2018', and in line with the London Safeguarding Children Board Thresholds Document. It aims to help identify when a child may need additional support to achieve their full potential. It introduces a continuum of help and support, provides information on the levels of need and gives examples of some of the factors that may indicate a child or young person needs additional support.

The safeguarding partners will review this document every two years, to ensure that emerging safeguarding themes are reflected where necessary.

Safeguarding partners annual report

The safeguarding partners will publish an annual report which sets out the work undertaken by the partnership and local partners to safeguard children and young people in the last financial year. The report will include information about:

- Our local priorities and progress towards achieving these
- Key work undertaken by partners
- Feedback from children and young people
- Information about the multi-agency safeguarding training programme
- The key learning points from any learning review and Child Safeguarding Practice

The report will help identify areas of focus for the next financial year. The report will also indicate if there are any planned updates to our local safeguarding partnership arrangements and what the proposed timelines are for implementing these.

The report will be published on the LSCP website. As per the requirements in Working Together to Safeguard Children 2018, the annual report will also be shared with the Child Safeguarding Practice Review Panel and the What Works Centre for Children's Social Care within seven days of being published.

Working with other partnership boards

The LSCP is committed to effective cross-partnership working to help ensure positive outcomes for children and young people. The LSCP Chair and Business Manager will meet annually with the Chairs of the following partnerships to align strategic priorities, address gaps and reduce duplication of our work:

- Health and Wellbeing Boards
- Safeguarding Adults Boards
- Community Safety Partnerships
- Violence Against Women and Girls Board

Funding arrangements

The safeguarding partners have agreed in principle that the overall budget for the first year will be maintained at the 2018/2019 level. In future years, the safeguarding partners will review the budget to ensure that contributions are equitable and proportional in order to cover all the elements of the safeguarding arrangements.

Child Safeguarding Practice Reviews will be funded by the partnership reserves held in each local authority.

The safeguarding partners acknowledge that in addition to the funding, professionals from a range of agencies contribute their time to supporting the work of the subgroups and the delivery and hosting of multi-agency training.

References and further links

- [DfE \(2018\) Working Together to Safeguard Children](#)
- [DfE \(2018\) Keeping Children Safe in Education](#)
- [London Child Protection Procedures](#)
- [Ofsted \(2018\) Joint Targeted Area Inspection Guidance](#)
- [LSCP Threshold of Needs Guide](#)
- [LSCB Annual Report](#)
- [Multi-agency Safeguarding Training](#)

Appendices

Terms of Reference for the LSCP

Published on: 28 June 2019
Implemented on: 29 September 2019
Review date: 29 September 2020